



# 19<sup>th</sup> Annual Conference on Global Economic Analysis

*"Analytical Foundations for Cooperation in a Multipolar World"*



*The World Bank, Washington DC, USA  
June 15-17, 2016*

*Conference Organizers*



*Conference Sponsors*



# Program Contents

<b>General Information</b> .....	<b>2</b>
Dates.....	2
Location .....	2
Objective.....	2
Format.....	2
Mobile Conference App and Social Media.....	2
<b>Conference Organizers</b> .....	<b>3</b>
<b>Conference Sponsors</b> .....	<b>4</b>
<b>Special Recognition</b> .....	<b>5</b>
Co-Chairs .....	5
Program Committee Members .....	5
Abstract Reviewers.....	5
Conference Mentors .....	5
<b>Ken Pearson Scholarship</b> .....	<b>6</b>
<b>Thomas Rutherford Scholarship</b> .....	<b>7</b>
<b>Transportation and Directions</b> .....	<b>8</b>
Airport Transportation .....	8
Public Transportation .....	9
Taxi Cabs .....	9
<b>Conference Venue: The World Bank</b> .....	<b>10</b>
Location .....	10
World Bank Security .....	10
Venue Maps.....	10
WiFi Access.....	11
<b>Tuesday, June 14</b> .....	<b>12</b>
Pre-Conference Seminars .....	12
<b>Wednesday, June 15</b> .....	<b>13</b>
Session Overview.....	13
Plenary Session: <i>“Economic Analysis of International Trade”</i> .....	14
Presentation Schedule.....	15
<b>Thursday, June 16</b> .....	<b>25</b>
Session Overview.....	25
Presentation Schedule.....	26
<b>Friday, June 17</b> .....	<b>39</b>
Session Overview.....	39
Plenary Session: <i>“Pushing the Frontier on Integrated Assessment Modeling”</i> .....	40
Presentation Schedule.....	41
<b>Saturday, June 18</b> .....	<b>49</b>
Post-Conference Event.....	49
<b>Participant List</b> .....	<b>50</b>
<b>Presenter and Session Chair Index</b> .....	<b>61</b>
<b>2017 Conference Preview</b> .....	<b>64</b>
<b>New Online Mini-Course: GTAP Preferential Trade Agreements</b> .....	<b>65</b>
<b>Journal of Global Economic Analysis</b> .....	<b>66</b>
<b>Notes</b> .....	<b>67</b>

# General Information

## Dates

June 15-17, 2016

## Location

The World Bank  
1818 H Street, NW, Washington DC 20433 USA  
*\*Main entrance off of H Street.*

## Objective

The objective of the annual conference on economic analysis is to promote the exchange of ideas among economists conducting quantitative analysis of global economic issues.

## Format

The majority of the conference features specially organized and contributed paper sessions. The organized sessions have been developed by members of the GTAP Network to highlight a specific area of research and/or policy analysis. The contributed paper sessions were selected through a peer review process and subsequently grouped to reflect the varied themes being addressed by members of the GTAP Network.

The conference will also include plenary sessions, each featuring distinguished intellectual leaders in their respective fields whose presentations are designed to introduce participants to new topics as well as provide fresh insights into familiar ones. The content of these sessions reflects the overall conference themes:

### *"Analytical Foundations for Cooperation in a Multipolar World"*

- Perspectives and policies for sustainable, inclusive growth
- Poverty and inequality in a rapidly changing world
- Sustainable development for the 21<sup>st</sup> Century
- Structural transformation in a changing world
- Implications of the internet for the world economy with sub-themes of trade in digital goods and NTMs

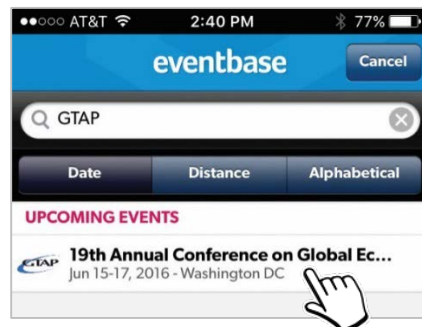
Papers from each session may be accessed through the conference homepage on the GTAP website:

<http://www.gtap.agecon.purdue.edu/events/conferences/2016/> ISSN 2160-2115 (online)

## Mobile Conference App and Social Media



**Eventbase** is a free mobile app containing conference program information and schedule updates. The app can be downloaded online at: <https://free.eventbase.com/download> or through your device's app store (iOS, Android, Blackberry). Once you have installed and launched the app, search for "GTAP" and the conference will be listed in the results. Eventbase also provides links to GTAP's social media for communication during the conference.



## Conference Organizers



### Center for Global Trade Analysis, Purdue University

<http://www.gtap.agecon.purdue.edu>

The Global Trade Analysis Project (GTAP) is a global network of researchers and policy makers conducting quantitative analysis of international policy issues within an economy-wide framework. GTAP is coordinated by the Center for Global Trade Analysis which is housed in the Department of Agricultural Economics at Purdue University. The Center for Global Trade Analysis' mission is to provide leadership in economic policy analysis through better data, fostering collaboration, and research. The centerpiece of Global Trade Analysis Project is the GTAP Data Base, a fully documented and publicly available, analytical data base for the global economy which contains detailed country data, linked through bilateral trade, transportation and protection. Accompanying this data base is a set of GTAP-based models used and developed by network members. The GTAP Data Base and analytical framework are used by thousands of researchers around the world. Originally, the majority of the research was related to international trade policy issues. Today, GTAP is still the most widely used tool for trade policy, but its use has expanded into poverty, international migration, foreign investment, climate change, environment, energy, and biofuel policies. GTAP has become a common "language" for many of those conducting analysis of global policy issues with GTAP-based results becoming increasingly influential in decision making around the world in trade, climate change, energy and the environment.



## WORLD BANK GROUP

### The World Bank

<http://www.worldbank.org/>

Since inception in 1944, the World Bank has expanded from a single institution to a closely associated group of five development institutions. The World Bank's mission evolved from the International Bank for Reconstruction and Development (IBRD) as facilitator of post-war reconstruction and development to the present-day mandate of worldwide poverty alleviation in close coordination with their affiliate, the International Development Association, and other members of the World Bank Group, the International Finance Corporation (IFC), the Multilateral Guarantee Agency (MIGA), and the International Centre for the Settlement of Investment Disputes (ICSID).

Once, the World Bank had a homogeneous staff of engineers and financial analysts, based solely in Washington, D.C. Today, they have a multidisciplinary and diverse staff that includes economists, public policy experts, sector experts and social scientists—and now more than a third of their staff is based in country offices.

Reconstruction remains an important part of their work. However, at today's World Bank, poverty reduction through an inclusive and sustainable globalization remains their overarching goal.

## Conference Sponsors



### **United States International Trade Commission**

<https://www.usitc.gov/>

The United States International Trade Commission is an independent, quasijudicial Federal agency with broad investigative responsibilities on matters of trade. The agency investigates the effects of dumped and subsidized imports on domestic industries and conducts global safeguard investigations. The Commission also adjudicates cases involving imports that allegedly infringe intellectual property rights. Through such proceedings, the agency facilitates a rules-based international trading system. The Commission also serves as a Federal resource where trade data and other trade policy-related information are gathered and analyzed. The information and analysis are provided to the President, the Office of the United States Trade Representative (USTR), and Congress to facilitate the development of sound and informed U.S. trade policy. The Commission makes most of its information and analysis available to the public to promote understanding of international trade issues.



**WORLD BANK GROUP**

**The World Bank**

<http://www.worldbank.org/>

# Special Recognition

## Co-Chairs

- **Dominique van der Mensbrugge**, Director, Center for Global Trade Analysis, Purdue University
- **Maryla Maliszewska**, Senior Economist, The World Bank

## Program Committee Members

Philip Adams	Patrick Jomini	Gopinath Munisamy
S. Amer Ahmed	Stephen Karingi	Brian O'Neill
Joaquim Bento Ferreira-Filho	Kenichi Kawasaki	Marinos Tsigas
Paolo Giordano	Bob Koopman	Terrie Walmsley
Thomas Hertel	Will Martin	

## Abstract Reviewers

Mustafa Acar	Lucas Ferraz	Luciana Porfirio
Angel Aguiar	James Fetzer	Devender Pratap
S. Amer Ahmed	Anand Ganesh-Kumar	Sebastian Rausch
Shahid Ahmed	Brad Gilmour	Jeff Reimer
A. Emre Akel	Alla Golub	David Roland-Holst
Zeynep Akgul	Jared Greenville	Jose Manuel Rueda-
Tariq Ali	Roberta Grundling	Cantuche
Channing Arndt	Houssein Guimbard	Amadou Sagnon
Misak Avetisyan	Iman Haqiqi	Bert Saveyn
Adeline Awantang	Jorge Hernandez	Enkhbayar Shagdar
Levent Aydin	Yiseok Hong	Erin Sherry
Christian Bachmann	Mark Horridge	Anirudh Shingal
Uris Lantz Baldos	Hans Grinsted Jensen	Chandrima Sikdar
Edward J. Balistreri	Silvia Kanadani Campos	Mahinda Siriwardana
Lacina Balma	Aikaterini Kavallari	Zuzana Smeets Kristkova
Seetha Bandara	Young Gui Kim	Brent Sohngen
Onil Banerjee	Youssef Kone	Jevgenijs Steinbuks
Suprabha Baniya	Zornitsa Kutlina-	
Andre Barbe	Dimitrova	David Tarr
Heleen Bartelings	Massimiliano La Marca	Natalia Tourdyeva
Güzin Bayar	Csilla Lakatos	Komi Tsowou
Jayson Beckman	Huey-Lin Lee	Wally Tyner
Dileep Birur	Jing Liu	Kirsten Urban
Maria Blanco	Hans Lofgren	Yatsumasa Uzun
Bineswaree Bolaky	Sheng Lu	Beatriz Velazquez
Ole Boysen	Jonas Luckmann	Monika Verma
Daniel Brown	Aline Magalhaes	Cristina Vinyes
Yiyong Cai	Shane Martin	Mike Webb
Jean Chateau	Gabriel Michelena	Elise Whalan
Lisandra Colley	Fulgence Mishili	Sara Wong
Erwin Corong	Andrew Mold	Wei Xie
Jared Creason	Kakali Mukhopadhyay	Yingying Xu
Hao (David) Cui	Brian Mureverwi	Liu Yu
Rosana Curzel	Badri Narayanan	Wusheng Yu
Gouranga Das	Masahiro Omura	Wen Yuan
Surajit Deb	Brian O'Neill	Katarzyna Zawalinska
Rob Dellink	Diti Oudendag	
Sumali Dissanayake	Silvia Palma Rojas	
Edson Domingues	Hom Pant	
José Elías Durán Lima	Ramiro Parrado	
Fabio Eboli	Luis Moises Pena Levano	
Andres Escobar	Denise Penello-Rial	
Mingtai Fan	Fernando Perobelli	
Emanuele Ferrari	Schuyler Porche	

## Conference Mentors

Philip Adams	Farzad Taheripour
Angel Aguiar	Karen Thierfelder
S. Amer Ahmed	Marinos Tsigas
Zeynep Akgul	Terrie Walmsley
Alessandro Antimiani	Niven Winchester
Jayatilleke Bandara	Glyn Wittwer
Mary Burfisher	
Maurizio Bussolo	
Rajesh Chadha	
Martin Cicowicz	
Erwin Corong	
Amanda M. (Leister)	
Countryman	
Laurent Creteigny	
Yvan Decreux	
Simeon Ehui	
Carmen Estrades	
Michael Ferrantino	
Emanuele Ferrari	
Joaquim Bento	
Ferreira-Filho	
Alan Fox	
Richard Garbaccio	
Delfin S Go	
Alla Golub	
Shih-Hsun Hsu	
Elena Ianchovichina	
Ken Itakura	
María C. Latorre	
Hiro Lee	
Shantong Li	
Will Martin	
Simon Mevel	
Badri Narayanan	
Janine Pelikan	
Everett Peterson	
Manitra Rakotoarisoa	
Sandra A. Rivera	
Sherman Robinson	
Roberto Roson	
Sebnem Sahin	
Khalid Siddig	
Yontem Sonmez	
Anna Strutt	



## Ken Pearson Scholarship



Ken Pearson's early career was as an outstanding mathematician. In the 1970s he became Reader and Chairman in Mathematics at La Trobe University, Australia. In his teaching role, he investigated the possibility of drawing on economics rather than physics for relevant examples. In this process he came across the newly emerging field of applied (or computable) general equilibrium modelling. Long before the economists, Ken recognized the need for software that would not only solve large scale economic models but would also be a vehicle: for organizing data; for analyzing results; for transferring models between researchers; and for storing models in a computationally accessible form which would allow them to be accessed at other times and by other researchers. By the mid-1980s he had responded to this need by taking up a visiting position at the Impact Research Centre (Melbourne University) and creating GEMPACK. In 1992, Ken moved to the Centre of Policy Studies (CoPS, then located at Monash University). At CoPS, he was appointed Professorial Fellow in 1999, and held the position of Deputy Director from 2000 to 2004. He retired in 2014, with the position of Director, GEMPACK passing to Mark Horridge.

In a recent summary of Ken's contribution to the GTAP, Tom Hertel wrote, *"Those of us who had the privilege of working closely with Ken count our collaborations with him as among the most stimulating and rewarding of our careers. Ken's keen intellect and his background in theoretical mathematics allowed him to quickly grasp the essence of whatever modeling challenge we posed."*

### Scholarship Details

In recognition of the many contributions made by the late Professor Ken Pearson to the GTAP Network, the **Centre of Policy Studies, Victoria University** has graciously funded a scholarship in his name aimed to support the participation of promising young researchers at the GTAP Conference and encourage their contribution to the use and further development of analytical software for CGE modelling, following in his tradition. Recipient(s) were selected based on the following criteria.

- an early career researcher within five years of the start of their research career
- active in undertaking applied model-based analyses of real world problems using GEMPACK or related software
- paper accepted into the GTAP Conference



### 2016 Ken Pearson Scholarship Recipient

The Centre of Policy Studies, Victoria University and the Center for Global Trade Analysis, Purdue University are pleased to announce the following recipient of the 2016 Ken Pearson Scholarship.



#### Dr. Martina Sartori

Post-Doc Researcher, School of International Studies, University of Trento

**Estimation of climate change damage functions for 140 regions in the GTAP9 database**  
by **Sartori, Martina** and Roberto Roson  
(Session #19, pg. 23)

Martina Sartori holds a PhD degree in Economics from the University of Milan, Italy. She is currently employed as a post-doc researcher at the School of International Studies of the University of Trento, Italy, where she is studying international agricultural trade and virtual water trade. She is also a junior research fellow at the Centre for Research on Energy and on Environmental Economics and Policy of the Bocconi University, Milan, Italy. She has been a research consultant for the World Bank (Washington, DC), for the European University Institute of Florence (Italy) and for the Euro-Mediterranean Centre for Climate Change (Lecce, Italy). Her major publications and research interests are about environmental and natural resources economics, computable general equilibrium modeling for environmental/climate change impacts and policy assessment. She has presented research papers at various local and international conferences and serves as referee to various academic journals. She is also lecturer of Development Economics at the University of Udine (Italy) and her academic experiences as lecturer include teaching microeconomics, macroeconomics, industrial economics and international economics at the Ca' Foscari University of Venice.

## Thomas Rutherford Scholarship



Thomas Rutherford received his Ph.D. in operations research from Stanford University in 1987 under the supervision of Alan Manne. He subsequently undertook a post-doctoral assignment with Herb Scarf at Yale, during which time, he became fully immersed in general equilibrium analysis. This led to a faculty position at the University of Western Ontario, where John Whalley was a leading light in CGE modeling and policy analysis. Tom then moved to Colorado, where he was promoted to full professor in 2003. He also tried his hand at independent consulting, then held a chair at ETH Zurich, before returning to his hometown of Madison, where he now serves on the faculty of Agricultural and Applied Economics. Over the past three decades, Rutherford has had a career arc that has touched the most challenging global policy issues of our times—trade, energy markets, and climate change. He has combined his keen interest in economic policy making while advancing the frontiers of economic modeling in spatial, industrial, mathematical and dynamic economics. The third component of Tom’s portfolio is the development of algorithms and software that has led to major improvements in quantitative tools that facilitate the ability to undertake policy analysis. The best known of these tools is the Mathematical Programming System for

General Equilibrium (MPSGE), a modeling environment designed to facilitate the development of GE models that is combined with the General Algebraic Modeling System (GAMS). He developed a global model in MPSGE coupled to the GTAP Data Base (known as GTAPinGAMS) that has been widely disseminated and lowered the entry cost to global economic modeling for GAMS users. Over the years, many modelers have been able to share in his discoveries and insights as he has made many of his models and related tools, largely developed in MPSGE and GAMS, available for public use—such as the GTAPinGAMS model, but also overlapping generations models, the use of mixed complementarity such as in the implementation of tariff rate quotas (TRQs), recursive versus intertemporal dynamic models and many others. Tom’s contributions to policy analysis, economic theory, and quantitative tools over the last three decades are exceptional and the reason for naming the scholarship in his honor.

### Scholarship Details

In recognition of the contributions made by Thomas Rutherford, the **GAMS Development Corporation** has graciously funded a scholarship in his name aimed to support the participation of promising young researchers at the GTAP Conference and encourage their contribution to the use and further development of analytical software for CGE modelling. Recipient(s) were selected based on being the following criteria.



- an early career researcher within five years of the start of their research career
- active in undertaking applied model-based analyses using GAMS or related software
- paper accepted into the GTAP Conference

### 2016 Thomas Rutherford Scholarship Recipient

The GAMS Development Corporation and the Center for Global Trade Analysis, Purdue University are pleased to announce the following recipient of the 2016 Thomas Rutherford Scholarship.



#### Dr. Christian Otchia

Postdoctoral Fellow, Nagoya University

**How to design the future? An economywide analysis of key industrial policies to boost pro-poor growth in DRC**  
by **Otchia, Christian**

(Session #11, pg. 19)

Dr. Otchia is postdoctoral research fellow at Nagoya University, where he studies ways to generate productive jobs and reduce poverty in Sub-Saharan Africa. He served as a national consultant to UNCTAD where he actively worked on the distributional and poverty effects of agricultural trade liberalization. Prior to his current position, he was a lecturer at Aichi Prefectural University and University of Kinshasa. His research interests include labor markets and policy evaluation in developing countries, using CGE and microsimulation models. His work includes contributions on pro-poor growth and industrial policy in resource-rich countries. His contribution on mining-based growth was recognized with the 2013 flash session prize from the International I-O Association. More recently, he has been affiliated with AGRODEP. His work has appeared in *Resources Policy*, the *International Journal of Economic Policy Studies*, and the *Journal of Economic Structures*, among others. Dr. Otchia earned his Ph.D. from Nagoya University and BA in mathematical economics with First Class Honors from the University of Kinshasa.



# Transportation and Directions

## Airport Transportation

**From Dulles International Airport** - Dulles is located approximately 25 miles (40 km) from downtown Washington DC.

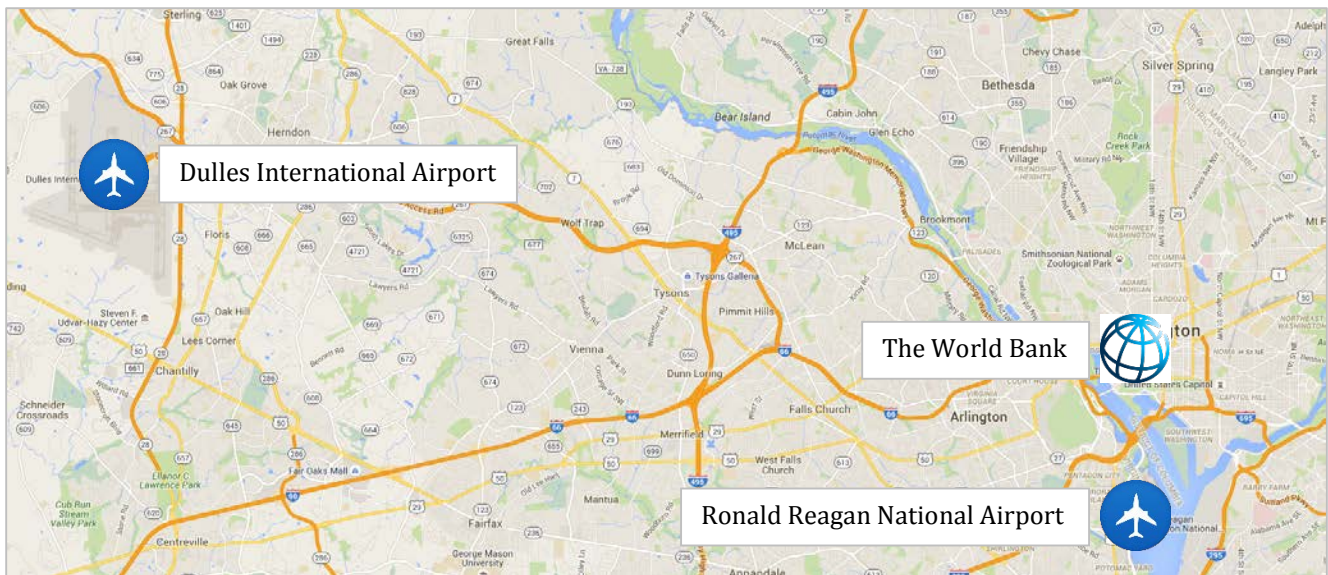
- **Washington Flyer Taxicabs** serve Washington Dulles International Airport exclusively with 24-hour service to and from the airport. No reservations are necessary. Simply follow the signs for “Ground Transportation” or “Taxi” to the lower level of the Main Terminal (down the ramp to Door 2 or Door 6) where a customer service representative will be available 24 hours a day. The trip from the airport to the World Bank will take approximately 45 minutes and cost around \$65, plus tip.
- **Washington Flyer Shared Van Services** (operated by Super Shuttle and Supreme Airport Shuttle) offer door-to-door service to and from the airport. The shared van counters are located on the lower level of the Main Terminal, down the ramps towards Door 2 and Door 6. The trip from the airport to the World Bank will take approximately 60 minutes (depending on other passenger’s destinations). A one-way fare is approximately \$30, plus tip.

For further information on transportation from IAD, visit: [www.flydulles.com/iad/parking-transportation](http://www.flydulles.com/iad/parking-transportation) or call +1-888-927-4359.

**From Ronald Reagan National Airport** - Reagan is located approximately 4 miles (6.5 kilometers) from downtown Washington DC.

- **Taxis** can be hailed by exiting any baggage claim to the curbside where taxi lines are clearly marked. A direct taxi from the airport to the World Bank will take approximately 15 minutes and cost around \$20, plus tip.
- **Shared van services** (operated by Super Shuttle and Supreme Airport Shuttle) offer door-to-door service on demand. To access shared van services, proceed to the outside curb or the baggage claim of Terminal A, B, or C and visit the counter. The trip from the airport to the World Bank will take approximately 30 minutes (depending on other passenger’s destinations). A one-way fare is approximately \$15, plus tip.
- **The Washington DC Metrorail system** has an elevated Metrorail station connected to the concourse level of Terminals B and C at Reagan National Airport. The Metro (Blue Line) takes about 15 minutes and costs \$2-3 to reach the Foggy Bottom Station or Farragut West (those closest to the World Bank). For further information on DC’s public transportation, please visit: [www.wmata.com](http://www.wmata.com).

For further information on transportation from DCA, visit: [www.flyreagan.com/dca/parking-transportation](http://www.flyreagan.com/dca/parking-transportation).



# Transportation and Directions

## Public Transportation

In Washington DC, there are two major forms of public transportation, the Metrobus and the Metrorail (the "Metro"). The Metro is the underground subway system; the Metrobus is the public bus system. The nearest Metro station on the Orange Line is Farragut West (about 2 blocks from the main World Bank building). The nearest station on the Red Line is Farragut North (about 3-4 blocks from the main building). The Metro system map follows with a black diamond representing The World Bank's approximate location. For further information on public transportation, please visit: [www.wmata.com](http://www.wmata.com).



## Taxi Cabs

Below is a listing of a few taxi cab companies in Washington DC.

- Yellow Cab Company of DC +1-202-544-1212
- DC Taxi +1-202-398-0500
- Diamond Cabs +1-202-387-6200

# Conference Venue: The World Bank

## Location

The World Bank, 1818 H Street, NW, Washington DC 20433 USA (Main entrance off of H Street)



## World Bank Security

All attendees will be required to present a government-issued photo ID before entering The World Bank. Please plan to arrive early to allow time to pass through security.

## Venue Maps

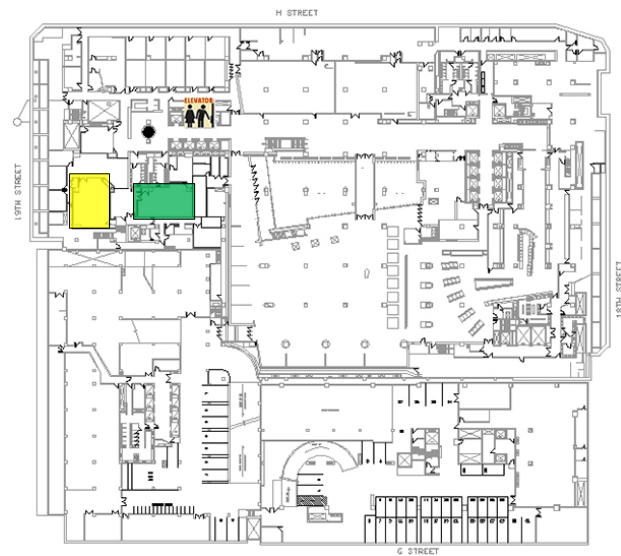
### Floor: MC-01

- Main Entrance (off of H Street)
- Front Lobby - Registration Desk
- Preston Auditorium - Plenary Sessions
- Atrium - Coffee Breaks, Lunches, Receptions



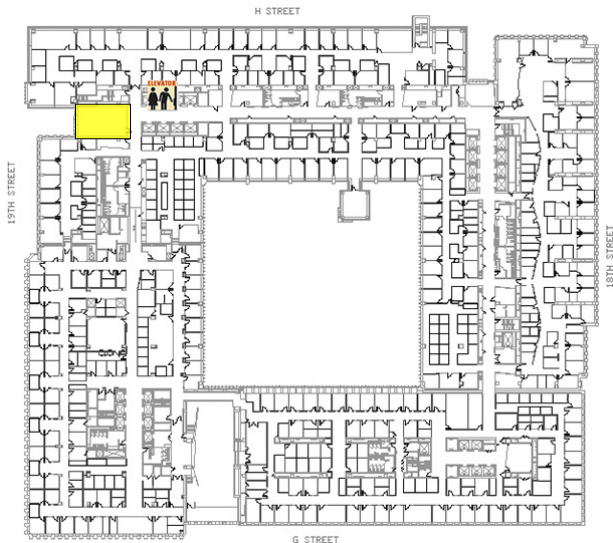
### Floor: MC-C1

- C1-100 - Parallel Sessions
- C1-200 - Parallel Sessions



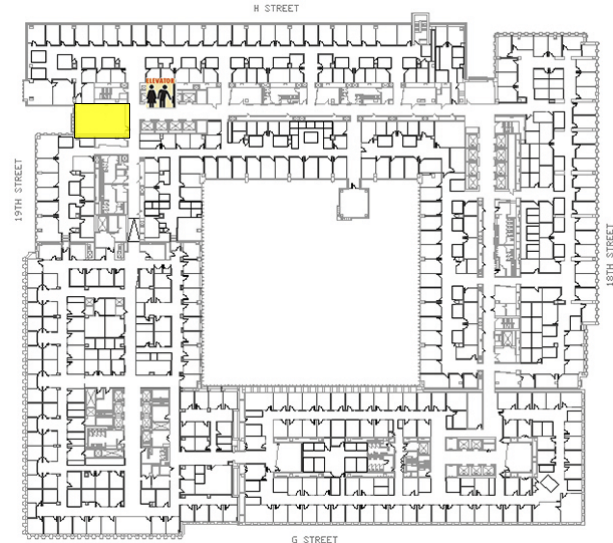
### Floor: MC-04

- 4-100 - Parallel Sessions



### Floor: MC-05

- 5-100 - Parallel Sessions

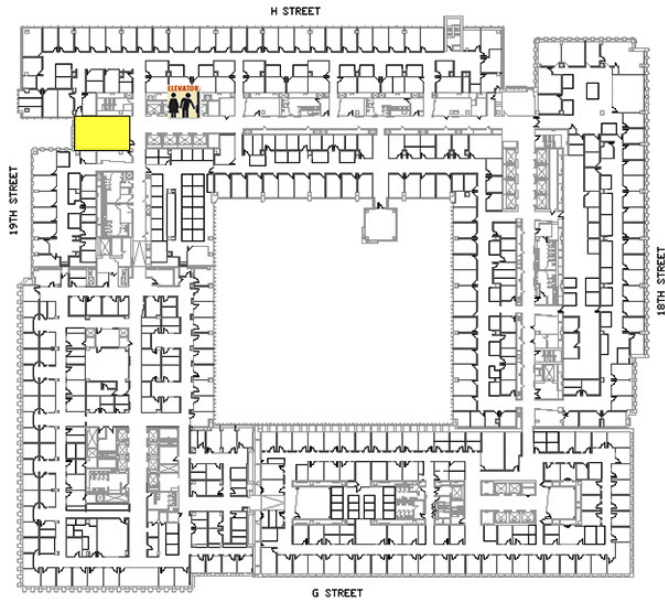




# Conference Venue: The World Bank

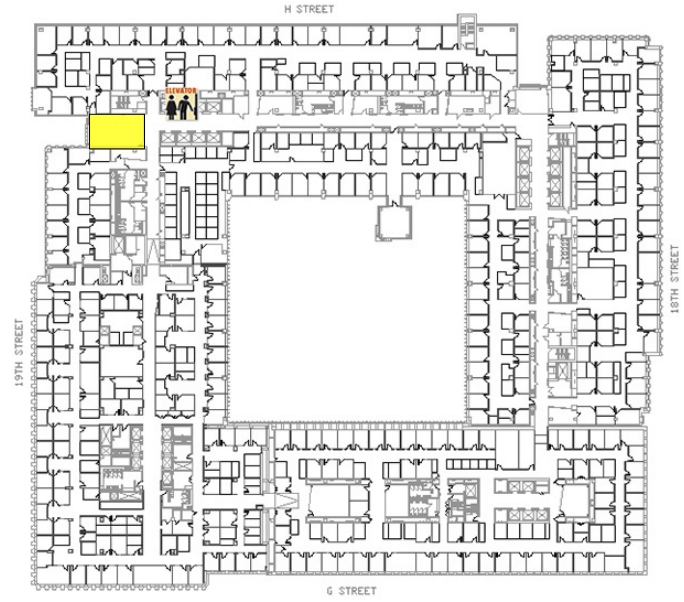
## Floor: MC-06

■ 6-100 – Parallel Sessions



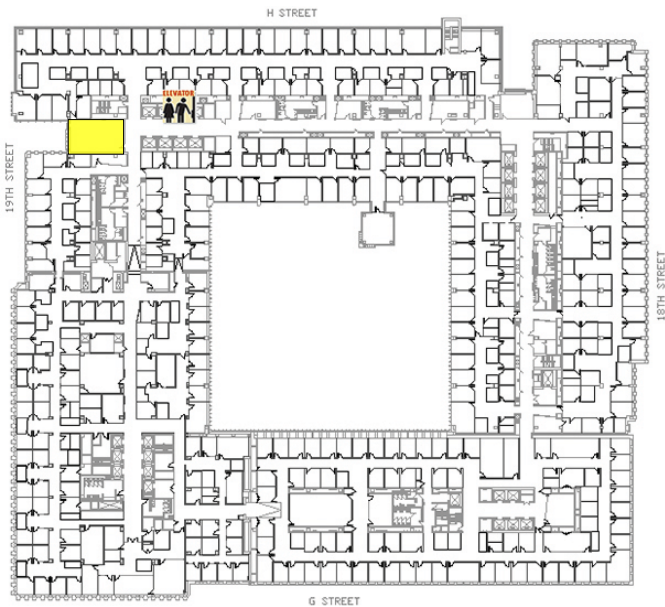
## Floor: MC-07

■ 7-100 – Parallel Sessions



## Floor: MC-08

■ 8-100 – Parallel Sessions



## WiFi Access

WiFi Name (SSID):

GUEST

Password:

*Will be posted on the walls inside or near each session room.*

## Tuesday, June 14

### Pre-Conference Seminars

Time	Event	Location
4:00-5:15pm (16:00-17:15)	Pre-Conference Seminars	The World Bank, MC 2-800

For those who registered to attend the pre-conference seminars, please make note of the following schedule. The times listed below are approximate as the seminars will run consecutively.



#### **World Bank Security**

*All attendees will be required to present a government-issued photo ID before entering The World Bank. Please plan to arrive early to allow time to pass through security.*

**4:00-4:30pm**  
(16:00-16:30)

#### **GTAPAgg2**

*Join Erwin Corong and Mark Horridge for a demonstration of the new GTAP aggregation utility.*

**4:30-5:15pm**  
(16:30-17:15)

#### **Standard GTAP Model in GAMS**

*A replicate of the standard GTAP Model has been developed in GAMS and coupled with a graphical user interface (GUI) developed by Wolfgang Britz, University of Bonn. Join Wolfgang, Dominique van der Mensbrugge, and Erwin Corong for a brief overview of the GAMS-based model and demonstrations on how to use it and generate simulation diagnostics using the GUI.*

## Wednesday, June 15 Session Overview

Full session details for this day are listed on pages 15-24. You can also access the conference schedule through the Eventbase mobile app. See page 2 for details.

	Preston Auditorium	C1-100	C1-200	4-100	5-100	6-100	7-100	8-100
<b>8:00am-5:00pm</b> (8:00-17:00)	<b>Registration</b> (Front Lobby)							
<b>9:00-9:30am</b>	<b>Opening Ceremony</b> <i>Pg. 15</i>							
<b>9:30-11:00am</b>	<b>Plenary Session</b> <i>Economic Analysis of International Trade</i> <i>Pg. 15</i>							
<b>11:00-11:30am</b>	<b>Coffee Break</b> (Atrium)							
<b>11:30am-1:00pm</b> (11:30-13:00)		<b>*Session #1</b> <i>The future of trade cost modelling in CGE</i>  <i>Pg. 15</i>	<b>Session #2</b> <i>Water Scarcity and Demand</i>  <i>Pg. 16</i>	<b>*Session #3</b> <i>China's medium and long term sustainable development policy analysis</i>  <i>Pg. 16</i>	<b>Session #4</b> <i>Migration</i>  <i>Pg. 16</i>	<b>Session #5</b> <i>Health-related Modeling</i>  <i>Pg. 17</i>	<b>Session #6</b> <i>Economic Growth and Development: Middle East</i>  <i>Pg. 17</i>	<b>*Session #7</b> <i>Shared-socio Economic Pathways (SSPs)</i>  <i>Pg. 17</i>
<b>1:00-2:30pm</b> (13:00-14:30)	<b>Lunch</b> (Atrium)							
<b>2:30-4:00pm</b> (14:30-16:00)		<b>*Session #8</b> <i>Student Panel: CGE Analyses of Current Economic Issues</i>  <i>Pg. 18</i>	<b>Session #9</b> <i>Bioenergy</i>  <i>Pg. 18</i>	<b>Session #10</b> <i>Labor Market Issues</i>  <i>Pg. 19</i>	<b>Session #11</b> <i>Economic Analysis of Poverty</i>  <i>Pg. 19</i>	<b>*Session #12</b> <i>Services Trade Data: Where we are and future directions</i>  <i>Pg. 19</i>	<b>Session #13</b> <i>Policy Analysis, Growth, and Crisis: Asia</i>  <i>Pg. 20</i>	<b>Session #14</b> <i>Dynamic Modeling of Growth and Development in Africa</i>  <i>Pg. 20</i>
<b>4:00-4:30pm</b> (16:00-16:30)	<b>Coffee Break</b> (Atrium)							
<b>4:30-6:30pm</b> (16:30-18:30)		<b>Session #15</b> <i>Food Prices and Security</i>  <i>Pg. 21</i>	<b>*Session #16</b> <i>Applications of Krugman and Melitz International Trade Models</i>  <i>Pg. 21</i>	<b>Session #17</b> <i>Foreign Direct Investment: Asia</i>  <i>Pg. 22</i>	<b>Session #18</b> <i>Bioenergy</i>  <i>Pg. 22</i>	<b>Session #19</b> <i>Climate Impacts</i>  <i>Pg. 23</i>	<b>*Session #20</b> <i>Integrated Economic-Environmental Modelling for Evidence-Based Policy and Decision Making</i>  <i>Pg. 23</i>	<b>Session #21</b> <i>Trade and the Environment</i>  <i>Pg. 24</i>
<b>6:30-8:30pm</b> (18:30-20:30)	<b>Reception</b> (Atrium)							

\*Organized Session



**Wednesday, June 15 – 9:30-11:00am**  
**Plenary Session: “Economic Analysis of International Trade”**

**“Trade Policy and Research in an Era of ‘Free Trade’”**



**Pinelopi (Penny) Koujianou Goldberg**

Professor of Economics and Editor, *American Economic Review*

Yale University

<http://www.econ.yale.edu/~pg87/>

Pinelopi (Penny) Koujianou Goldberg is the William K. Lanman, Jr. Professor of Economics at Yale University and Editor-in-Chief of the *American Economic Review*. She is Member of the American Academy of Arts and Sciences, Recipient of the John Simon Guggenheim Memorial Foundation Fellowship in 2010-11 and the Bodossaki Prize in Social Sciences in 2003, Elected Fellow of the Econometric Society, Research Associate at the National Bureau of Economic Research (NBER), and Board Member of the Bureau for Research and Economic Analysis of Development (BREAD). She has published numerous articles in the areas of applied microeconomics, international trade, and industrial organization. Her current research interests include the effects of trade liberalization on growth and the income distribution, the effects of intellectual property rights enforcement in developing countries, and the determinants of incomplete exchange rate pass-through. She holds a Diploma in Economics from the University of Freiburg, Germany and a Ph.D in Economics from Stanford University.

**“Relaxing parametric assumptions in general equilibrium trade models”**



**Dave Donaldson**

Associate Professor of Economics

Stanford University

<https://economics.stanford.edu/people/dave-donaldson>


Dave Donaldson (Associate Professor of Economics at Stanford University) holds a PhD in Economics from the London School of Economics and a Master’s degree in Physics from Oxford University. At Stanford he teaches and carries out research on topics at the intersection of International/Intranational Trade, Development Economics and Economic History. He has studied, among other topics: market integration, the impact of improvements in transportation infrastructure, how trade can mediate the effects of climate change, and how trade affects food security and famine. He is a past winner of the Sloan Research Fellowship and holds editorial positions at the *American Economics Review*, the *Journal of Economic Literature*, the *Journal of International Economics*, the *Review of Economic Studies* and the *Quarterly Journal of Economics*. Prior to joining Stanford he was the Gary Loveman Career Development Associate Professor of Economics at MIT and a Visiting Professor at Harvard University.

## Wednesday, June 15

### Presentation Schedule

Presenters (in bold) should arrive 10 minutes prior to the start of their session with their presentation on a USB drive in both PowerPoint and PDF formats. Unless otherwise noted, all parallel and organized session presentations are allotted 30 minutes - 20 for presentation, immediately followed by 10 for discussion.

Looking for a paper? Search by ID# at: <http://www.gtap.agecon.purdue.edu/events/conferences/2016/>

Time	Event	Location
8:00am-5:00pm (8:00-17:00)	<b>Onsite Registration</b>	<b>Front Lobby</b>
	 <p><b>World Bank Security</b>  <i>All attendees will be required to present a government-issued photo ID before entering The World Bank. Please plan to arrive early to allow time to pass through security.</i></p>	
9:00-9:30am	<b>Opening Ceremony</b>	<b>Preston Auditorium</b>
	<ul style="list-style-type: none"> <li>- <b>Maryla Maliszewska</b>, Senior Economist, The World Bank</li> <li>- <b>Thomas Hertel</b>, Distinguished Professor and Executive Director, Center for Global Trade Analysis, Purdue University</li> <li>- <b>Shantayanan Devarajan</b>, Chief Economist, Middle East and North Africa Region, The World Bank</li> </ul>	
9:30-11:00am	<b>Plenary Session</b>	<b>Preston Auditorium</b>
	<p><i>"Economic Analysis of International Trade"</i>            Chair: Sébastien Jean</p> <ul style="list-style-type: none"> <li>- <b>Trade Policy and Research in an Era of 'Free Trade'</b>              by <b>Goldberg, Pinelopi (Penny) Koujianou</b></li> <li>- <b>Relaxing parametric assumptions in general equilibrium trade models</b>              by <b>Donaldson, Dave</b></li> </ul>	
11:00-11:30am	<b>Coffee Break</b>	<b>Atrium</b>
11:30am-1:00pm (11:30-13:00)	<b>Organized Session #1</b>	<b>C1-100</b>
	<p><i>"The future of trade cost modelling in CGE"</i>            Organizer/Chair: Lucian Cernat</p> <ul style="list-style-type: none"> <li>- <b><u>The economic impact of eliminating domestic preference margins in GPA countries: a 'phantom' tax modelling assessment</u> (#4888)</b>              by <b>Kutlina-Dimitrova, Zornitsa</b></li> <li>- <b><u>Willingness to Pay in CGE Models</u> (#4902)</b>              by <b>Walmsley, Terrie</b> and Peter Minor</li> <li>- <b><u>Is Trade Facilitation a Free Lunch? A General Equilibrium Approach</u> (#5022)</b>              by <b>Fouré, Jean</b> and Lionel Fontagné</li> </ul>	

## Wednesday, June 15 Presentation Schedule

Presenters (in bold) should arrive 10 minutes prior to the start of their session with their presentation on a USB drive in both PowerPoint and PDF formats. Unless otherwise noted, all parallel and organized session presentations are allotted 30 minutes - 20 for presentation, immediately followed by 10 for discussion.

Looking for a paper? Search by ID# at: <http://www.qtap.agecon.purdue.edu/events/conferences/2016/>

Time	Event	Location
11:30am-1:00pm (11:30-13:00)	<b>Session #2</b>  <i>"Water Scarcity and Demand"</i> Chair: Jing Liu <ul style="list-style-type: none"> <li>- <b><u>Economic Impacts of Water Scarcity under Diverse Water Salinities</u></b> (#5101) by <b>Palatnik, Ruslana Rachel</b>, Zvi Baum, Iddo Kan and Mickey Rapaport-Rom</li> <li>- <b><u>Simulating the Macroeconomic Impact of Future Water Scarcity</u></b> (#4909) by <b>Roson, Roberto</b> and Richard Damania</li> <li>- <b><u>Water Demand Prospects in Brazil: A Sectoral Evaluation Using an Inter-Regional CGE Model</u></b> (#4928) by <b>Dos Santos Fachinelli Ferrarini, Angel</b>, Joaquim Bento Ferreira-Filho and Mark Horridge</li> </ul>	C1-200
11:30am-1:00pm (11:30-13:00)	<b>Organized Session #3</b>  <i>"China's medium and long term sustainable development policy analysis"</i> Organizer/Chair: Yaxiong Zhang <ul style="list-style-type: none"> <li>- <b><u>China's Long Term Energy Demand Forecast—An application of a hybrid model of CGE and energy demand modules</u></b> (#5024) by <b>Li, Jifeng</b> and Yaxiong Zhang</li> <li>- <b><u>Analysis of Paths of China's Carbon Emission Peaking by 2030-based on SICGE model</u></b> (#4994) by <b>Songfeng, Cai</b>, Jifeng Li and Yaxiong Zhang</li> <li>- <b><u>Firm Heterogeneity and Its Implication on Chinese Climate Policies - A CGE Analysis based on China's National IO Table with Firm Heterogeneity Information</u></b> (#5014) by <b>Tang, Weiqi</b>, Libo Wu, Haoqi Qian and Kege Sun</li> </ul>	4-100
11:30am-1:00pm (11:30-13:00)	<b>Session #4</b>  <i>"Migration"</i> Chair: Xiujian Peng <ul style="list-style-type: none"> <li>- <b><u>A General Equilibrium Model of Migration and Poverty</u></b> (#4984) by <b>Bradford, Scott</b></li> <li>- <b><u>Economic Growth of Developing Economies with Informal Sector as a Sub-Market</u></b> (#4982) by <b>Mondal, Rima</b> and Shubhasankar Chattopadhyay</li> <li>- <b><u>Refugee immigration and its effects on German markets</u></b> (#4952) by Gonzalez-Mellado, Aida, <b>Petra Salamon</b> and Martin Banse</li> </ul>	5-100

## Wednesday, June 15 Presentation Schedule

Presenters (in bold) should arrive 10 minutes prior to the start of their session with their presentation on a USB drive in both PowerPoint and PDF formats. Unless otherwise noted, all parallel and organized session presentations are allotted 30 minutes - 20 for presentation, immediately followed by 10 for discussion.

Looking for a paper? Search by ID# at: <http://www.gtap.agecon.purdue.edu/events/conferences/2016/>

Time	Event	Location
11:30am-1:00pm (11:30-13:00)	<b>Session #5</b>  <i>"Health-related Modeling"</i> Chair: Marcus Keogh-Brown <ul style="list-style-type: none"> <li>- <b><u>Application of a fully integrated Macroeconomic-Environmental-Demographic-health (MED-health) model framework: The case of palm oil in Thailand. (#5011)</u></b>                by <b>Jensen, Henning Tarp</b>, Marcus Keogh-Brown, Richard D Smith, Sanjay Basu, Soledad Cuevas, Alan Dangour, Shabbir H Gheewala, Rosemary Green, Edward Joy, Nalitra Thaiprasert and Bhavani Shankar</li> <li>- <b><u>Modeling the economic impacts of epidemics in developing countries under alternative intervention strategies (#4980)</u></b>                by Geard, Nic, <b>John Madden</b>, Emma McBryde, Rob Moss and Nhi Tran</li> <li>- <b><u>International Trade and Health: Implications for Developing Countries (#4940)</u></b>                by <b>Khorana, Sangeeta</b> and Badri Narayanan</li> </ul>	6-100
11:30am-1:00pm (11:30-13:00)	<b>Session #6</b>  <i>"Economic Growth and Development: Middle East"</i> Chair: Khalid Siddig <ul style="list-style-type: none"> <li>- <b><u>Consequences of conflict: the impact of the closure regime on the economy of the West Bank (#4967)</u></b>                by <b>Agbahey, Johanes</b>, Khalid Siddig, Harald Grethe and Ole Boysen</li> <li>- <b><u>Structural Reform in the Gulf Cooperation Council Region – Case Study (1) Taxation Reform in Saudi Arabia (#4992)</u></b>                by <b>Adams, Philip</b> and Louise Roos</li> </ul>	7-100
11:30am-1:00pm (11:30-13:00)	<b>Organized Session #7</b>  <i>"Shared-socio Economic Pathways (SSPs)"</i> Organizer: Dominique van der Mensbrugge Chair: John Weyant <ul style="list-style-type: none"> <li>- <b><u>The Shared Socioeconomic Pathways (SSPs) and their extension and use in impact, adaptation and vulnerability studies (#5113)</u></b>                by <b>O'Neill, Brian</b></li> <li>- <b><u>How are the SSP storylines being implemented in the Integrated Assessment Models—with a focus on land-use changes (#5114)</u></b>                by <b>Calvin, Katherine</b></li> <li>- <b><u>What are some of the emerging key findings from the SSPs? (#5115)</u></b>                by <b>Van Vuuren, Detlef</b></li> </ul>	8-100

## Wednesday, June 15 Presentation Schedule

Presenters (in bold) should arrive 10 minutes prior to the start of their session with their presentation on a USB drive in both PowerPoint and PDF formats. Unless otherwise noted, all parallel and organized session presentations are allotted 30 minutes - 20 for presentation, immediately followed by 10 for discussion.

Looking for a paper? Search by ID# at: <http://www.qtap.agecon.purdue.edu/events/conferences/2016/>

Time	Event	Location
1:00-2:30pm (13:00-14:30)	<b>Lunch</b>	Atrium
2:30-4:00pm (14:30-16:00)	<b>Organized Session #8</b>  <i>"Student Panel: CGE Analyses of Current Economic Issues"</i> Organizers/Chairs: Mary Burfisher and Zeynep Akgul  <i>Presentations in this session are allotted 15 minutes - 10 for presentation, immediately followed by 5 for discussion.</i> <ul style="list-style-type: none"> <li>- <b><u>Climate change and Canada in 2030: A computable general equilibrium analysis</u></b> (#4927) by <b>Jacobs, Henry</b></li> <li>- <b><u>The effect of easing traffic congestion in the Philippines using a CGE model</u></b> (#5128) by <b>Folsom, Brennan</b></li> <li>- <b><u>Alternatives to Illegal mining in Peru: Madre de Dios as a case study</u></b> (#4926) by Pineiro, Valeria, <b>Jenny Thomas</b> and Pablo Elverdin</li> <li>- <b><u>Internal Migration, Redistributive Policies and Income Distribution in Turkey: An Intertemporal CGE Analysis</u></b> (#5061) by <b>Yakut, Aykut Mert</b></li> <li>- <b><u>Ecological Balance Determined by Human Choice: How does forestland change with consumer preferences for GM soybeans?</u></b> (#5079) by <b>Yang, Anton</b></li> </ul>	C1-100
2:30-4:00pm (14:30-16:00)	<b>Session #9</b>  <i>"Bioenergy"</i> Chair: Jared Creason <ul style="list-style-type: none"> <li>- <b><u>Modelling the Bioeconomy: Linkages between Agricultural, Wood and Energy Markets</u></b> (#5033) by <b>Banse, Martin</b>, Niels Janzen, Franziska Junker, Peter Kreins, Frank Offermann, Petra Salamon and Holger Weimar</li> <li>- <b><u>Assessing Sustainability of Biofuels Production in China</u></b> (#5081) by <b>Birur, Dileep</b>, Ashok Chapagain, Stephen Devadoss and Paudel Krishna</li> </ul>	C1-200

## Wednesday, June 15 Presentation Schedule

Presenters (in bold) should arrive 10 minutes prior to the start of their session with their presentation on a USB drive in both PowerPoint and PDF formats. Unless otherwise noted, all parallel and organized session presentations are allotted 30 minutes - 20 for presentation, immediately followed by 10 for discussion.

Looking for a paper? Search by ID# at: <http://www.qtap.agecon.purdue.edu/events/conferences/2016/>

Time	Event	Location
2:30-4:00pm (14:30-16:00)	<b>Session #10</b>  <i>"Labor Market Issues"</i> Chair: Terrie Walmsley <ul style="list-style-type: none"> <li>- <u><b>Are we there yet? Adjustment paths in response to Tariff shocks: a CGE Analysis.</b></u> (#5076) by Wiskich, Tony and <b>Cedric Hodges</b></li> <li>- <u><b>Solving a partial equilibrium model in a CGE framework: the case of a BMS model</b></u> (#4996) by <b>Zhang, Xiao-Guang</b></li> <li>- <u><b>Modelling Involuntary Unemployment in Applied GE Models</b></u> (#5091) by <b>Pant, Hom</b></li> </ul>	4-100
2:30-4:00pm (14:30-16:00)	<b>Session #11</b>  <i>"Economic Analysis of Poverty"</i> Chair: Delfin S Go <ul style="list-style-type: none"> <li>- <u><b>How to design the future? An economywide analysis of key industrial policies to boost pro-poor growth in DRC</b></u> (#4931) by <b>*Otchia, Christian</b> <i>*Thomas Rutherford Scholarship Recipient</i></li> <li>- <u><b>Evaluating Impacts of Investments in the Tourism Sector as a Poverty Reduction Strategy in Rwanda</b></u> (#5037) by <b>Ochuodho, Thomas</b>, Onil Banerjee, Janaki Alavalapati, Michel Masozera and Pankaj Lal</li> <li>- <u><b>Modeling Distributional Effects of Macroeconomic Shocks: Increasing female participation and formal employment in Turkey</b></u> (#5062) by <b>Osorio Rodarte, Israel</b></li> </ul>	5-100
2:30-4:00pm (14:30-16:00)	<b>Organized Session #12</b>  <i>"Services Trade Data: Where we are and future directions"</i> Organizer: Angel Aguiar Chair: Laurent Cretegny <ul style="list-style-type: none"> <li>- <u><b>Trade in Services by Modes of Supply</b></u> (#4948) by Rueda-Cantuche, Jose Manuel, Riina Kerner, Zornitsa Kutlina-Dimitrova and <b>Lucian Cernat</b></li> <li>- <u><b>A global matrix of trade in services</b></u> (#4958) by Fortanier, Fabienne, Antonella Liberatore, <b>Andreas Maurer</b> and Laura Thomson</li> <li>- <u><b>Services trade data in the Global trade analysis project</b></u> (#5105) by <b>McDougall, Robert</b>, Joseph Francois and Angel Aguiar</li> </ul>	6-100



## Wednesday, June 15 Presentation Schedule

Presenters (in bold) should arrive 10 minutes prior to the start of their session with their presentation on a USB drive in both PowerPoint and PDF formats. Unless otherwise noted, all parallel and organized session presentations are allotted 30 minutes - 20 for presentation, immediately followed by 10 for discussion.

Looking for a paper? Search by ID# at: <http://www.qtap.agecon.purdue.edu/events/conferences/2016/>

Time	Event	Location
2:30-4:00pm (14:30-16:00)	<b>Session #13</b>  <i>"Policy Analysis, Growth, and Crisis: Asia"</i> Chair: Badri Narayanan <ul style="list-style-type: none"> <li>- <u><b>Extensive and Intensive Margins of India's Manufactured Exports: Comparison with China (#4981)</b></u> by <b>A, Lakshmi</b></li> <li>- <u><b>Key factors affecting Chinas changing demand for liquefied natural gas (#5040)</b></u> by Liu, Jin, <b>Xiujian Peng</b> and Philip Adams</li> <li>- <u><b>Analysis of the impact of the decline in crude oil imports on the Japanese economy (#4930)</b></u> by <b>Higashi, Akiko</b></li> </ul>	7-100
2:30-4:00pm (14:30-16:00)	<b>Session #14</b>  <i>"Dynamic Modeling of Growth and Development in Africa"</i> Chair: Simeon Ehui <ul style="list-style-type: none"> <li>- <u><b>Agricultural Policy, Productivity and Long Term Economic Growth in Senegal : An Analysis using Dynamic Computable General Equilibrium (#5104)</b></u> by Sy, <b>Hamat</b></li> <li>- <u><b>The Doha agenda: What's in it for Africa, and what next for secured development outcomes and fast integration imperatives? (#5047)</b></u> by <b>Coulibaly, Adama Ekberg</b>, Krishna Chikhuri, Medhat El Helepi and Tariq Ali</li> </ul>	8-100
4:00-4:30pm (16:00-16:30)	<b>Coffee Break</b>	<b>Atrium</b>

## Wednesday, June 15

### Presentation Schedule

Presenters (in bold) should arrive 10 minutes prior to the start of their session with their presentation on a USB drive in both PowerPoint and PDF formats. Unless otherwise noted, all parallel and organized session presentations are allotted 30 minutes - 20 for presentation, immediately followed by 10 for discussion.

Looking for a paper? Search by ID# at: <http://www.qtap.agecon.purdue.edu/events/conferences/2016/>

Time	Event	Location
4:30-6:30pm (16:30-18:30)	<b>Session #15</b>  <i>"Food Prices and Security"</i> Chair: Kirsten Urban <ul style="list-style-type: none"> <li>- <b><u>Organic agriculture in Bhutan - a two-edged sword? The trade-off between environmental sustainability and rice self-sufficiency</u></b> (#4874) by <b>Feuerbacher, Arndt</b>, Ole Boysen, Jonas Luckmann and Harald Grethe</li> <li>- <b><u>Impact of Increasing Agricultural Domestic Support on Food Price Transmission</u></b> (#5103) by Yang, Fan, Kirsten Urban, <b>Martina Brockmeier</b>, Eddy Bekkers and Joseph Francois</li> <li>- <b><u>A Balanced Global Food Demand and Supply in 2050: How can we meet the challenge?</u></b> (#4904) by Brockmeier, Martina, Søren Elkjær Frandsen, Mira Frommknecht, <b>Vladimir Korovin</b>, Ryan Gorman and Kirsten Urban</li> <li>- <b><u>Implications of Slowing Growth for Hunger and Poverty</u></b> (#5098) by Laborde, David and <b>Will Martin</b></li> </ul>	C1-100
4:30-6:30pm (16:30-18:30)	<b>Organized Session #16</b>  <i>"Applications of Krugman and Melitz International Trade Models"</i> Organizer/Chair: David Tarr <ul style="list-style-type: none"> <li>- <b><u>Comparison of Welfare Results from Trade Liberalization in the Armington, Krugman and Melitz Models: Impacts with features of real economies</u></b> (#5054) by <b>Balistreri, Edward J.</b> and David Tarr</li> <li>- <b><u>The Impact of WTO Accession and Complementary Structural Reforms on the Economy of Belarus: A Quantitative Evaluation</u></b> (#4921) by Balistreri, Edward J., <b>Zoryana Olekseyuk</b> and David Tarr</li> <li>- <b><u>Poverty and Shared Prosperity Implications of Deep Integration in Eastern and Southern Africa</u></b> (#4894) by Balistreri, Edward J., Maryla Maliszewska, Israel Osorio-Rodarte, <b>David Tarr</b> and Hidemichi Yonezawa</li> <li>- <b><u>Non-tariff barriers and trade integration in the EAEU</u></b> (#4989) by Knobel, Alexander, Andrei Lipin, Andrey Malokostov and <b>Natalia Tourdyeva</b></li> </ul>	C1-200

## Wednesday, June 15

### Presentation Schedule

Presenters (in bold) should arrive 10 minutes prior to the start of their session with their presentation on a USB drive in both PowerPoint and PDF formats. Unless otherwise noted, all parallel and organized session presentations are allotted 30 minutes - 20 for presentation, immediately followed by 10 for discussion.

Looking for a paper? Search by ID# at: <http://www.qtap.agecon.purdue.edu/events/conferences/2016/>

Time	Event	Location
4:30-6:30pm (16:30-18:30)	<b>Session #17</b>  <b><i>“Foreign Direct Investment: Asia”</i></b> Chair: María C. Latorre <ul style="list-style-type: none"> <li>– <b><u>Charting directions for sustainable development in Myanmar: A computable general equilibrium (CGE) approach</u></b> (#4935) by <b>Ko, Shwe Zin</b>, Zhaoyong Zhang, Pierre Horwitz and Hadrian Djajadikerta</li> <li>– <b><u>Foreign Direct Investment, Productivity and Crowding-out: Dynamic Panel Evidence on Vietnamese Firms</u></b> (#4925) by <b>Pham, Hanh Thi My</b></li> <li>– <b><u>The Effect of Reducing Investment Barriers in China’s Services Sectors</u></b> (#5041) by <b>Yuan, Wen</b></li> </ul>	4-100
4:30-6:30pm (16:30-18:30)	<b>Session #18</b>  <b><i>“Bioenergy”</i></b> Chair: Farzad Taheripour <ul style="list-style-type: none"> <li>– <b><u>Economic impacts of the new reality of the Brazilian pre-salt exploration. Is there a threat to ethanol?</u></b> (#4938) by <b>Bistafa, Rafael</b>, Angelo Gurgel and Sergey Paltsev</li> <li>– <b><u>China and India Biofuel Policy, Food versus Fuel?</u></b> (#4911) by <b>Beckman, Jayson</b></li> <li>– <b><u>Macro-economic outlook of sustainable energy and biorenewables innovations</u></b> (#4963) by <b>van Meijl, Hans</b>, Yannis Tsiropoulos, Heleen Bartelings, Ric Hoefnagels, Edward Smeets, Andrzej Tabeau and Andre Faaij</li> <li>– <b><u>How to Reach 40% Reduction in Carbon Dioxide Emissions from Road Transport by 2030: Propulsion Options and their Impacts on the Economy</u></b> (#4897) by Nylund, Nils-Olof, <b>Saara Tamminen</b>, Kai Sipilä, Juhani Laurikko, Esa Sipilä, Kari Mäkelä, Ilkka Hannula and Juha Honkatukia</li> </ul>	5-100

## Wednesday, June 15 Presentation Schedule

Presenters (in bold) should arrive 10 minutes prior to the start of their session with their presentation on a USB drive in both PowerPoint and PDF formats. Unless otherwise noted, all parallel and organized session presentations are allotted 30 minutes - 20 for presentation, immediately followed by 10 for discussion.

Looking for a paper? Search by ID# at: <http://www.gtap.agecon.purdue.edu/events/conferences/2016/>

Time	Event	Location
4:30-6:30pm (16:30-18:30)	<b>Session #19</b>  <i>"Climate Impacts"</i> Chair: Philip Adams <ul style="list-style-type: none"> <li>- <b><u>Climate change damage and negotiations</u></b> (#5015) by <b>Antimiani, Alessandro</b>, Valeria Costantini, Giorgia Sforza, Anil Markandya and Elena Paglialunga</li> <li>- <b><u>Estimation of climate change damage functions for 140 regions in the GTAP9 database</u></b> (#4910) by <b>*Sartori, Martina</b> and Roberto Roson <i>*Ken Pearson Scholarship Recipient</i></li> <li>- <b><u>The economic consequences of air pollution</u></b> (#4957) by <b>Lanzi, Elisa</b>, Rob Dellink and Jean Chateau</li> <li>- <b><u>Analyzing the coordinated impacts of climate policies for financing adaptation and development actions</u></b> (#4986) by <b>Delpiazzo, Elisa</b> and Ramiro Parrado</li> </ul>	6-100
4:30-6:30pm (16:30-18:30)	<b>Organized Session #20</b>  <i>"Integrated Economic-Environmental Modelling for Evidence-Based Policy and Decision Making"</i> Organizer/Chair: Onil Banerjee <ul style="list-style-type: none"> <li>- <b><u>From almond shaming to water trading: CGE insights into managing California's drought</u></b> (#4872) by <b>Wittwer, Glyn</b></li> <li>- <b><u>Using the SEEA Experimental Ecosystem Accounting framework to advance I-O and CGE integrated environmental-economic modelling</u></b> (#4979) by <b>Obst, Carl</b> and Mark Eigenraam</li> <li>- <b><u>The SEEA-Based Integrated Economic-Environmental Modelling Framework</u></b> (#5075) by <b>Banerjee, Onil</b>, Martin Cicowiez, Renato Vargas and Mark Horridge</li> </ul>	7-100

## Wednesday, June 15 Presentation Schedule

Presenters (in bold) should arrive 10 minutes prior to the start of their session with their presentation on a USB drive in both PowerPoint and PDF formats. Unless otherwise noted, all parallel and organized session presentations are allotted 30 minutes - 20 for presentation, immediately followed by 10 for discussion.

Looking for a paper? Search by ID# at: <http://www.qtap.agecon.purdue.edu/events/conferences/2016/>

Time	Event	Location
4:30-6:30pm (16:30-18:30)	<b>Session #21</b>  <i>"Trade and the Environment"</i> Chair: Richard Garbaccio  – <b><u>Reconsidering Carbon Equivalence</u></b> (#5072) by <b>Batistich, Mary Kate</b>  – <b><u>How green is organic? Indirect effects of making EU agriculture greener</u></b> (#5003) by <b>Bellora, Cecilia</b> and Christophe Bureau  – <b><u>An examination of the International Trade Impacts of Climate Change</u></b> (#4900) by <b>Chateau, Jean</b> , Rob Dellink, Hyunjeong Hwang and Elisa Lanzi  – <b><u>Optimal Economic Sanctions</u></b> (#5116) by Boehringer, Christoph, Michael Ferris and <b>Thomas Rutherford</b>	8-100
6:30-8:30pm (18:30-20:30)	<b>Reception</b>	Atrium

## Thursday, June 16 Session Overview

Full session details for this day are listed on pages 26-38. You can also access the conference schedule through the Eventbase mobile app. See page 2 for details.

	C1-100	C1-200	4-100	5-100	6-100	7-100	8-100
<b>8:30am-5:00pm</b> (8:30-17:00)	<b>Registration</b> (Front Lobby)						
<b>9:00-10:30am</b>	<b>*Session #22</b> <i>Uncertainty in Modeling Future Global Economic &amp; Environmental Outcomes</i>  Pg. 26	<b>Session #23</b> <i>Agricultural Policies: Asia</i>  Pg. 26	<b>*Session #24</b> <i>European Union Scenarios</i>  Pg. 26	<b>Session #25</b> <i>Trade in Services</i>  Pg. 27	<b>Session #26</b> <i>Climate Policy and Impacts</i>  Pg. 27	<b>Session #27</b> <i>Economic Growth and Crisis: South America</i>  Pg. 27	<b>Session #28</b> <i>Baseline Development</i>  Pg. 28
<b>10:30-11:00am</b>	<b>Coffee Break</b> (Atrium)						
<b>11:00am-1:00pm</b> (11:00-13:00)	<b>Session #29</b> <i>Energy Modeling</i>  Pg. 28	<b>*Session #30</b> <i>Advances in labor modeling: General equilibrium and micro perspectives</i>  Pg. 29	<b>Session #31</b> <i>Food Prices and Security</i>  Pg. 29	<b>Session #32</b> <i>Trade and the Environment</i>  Pg. 30	<b>*Session #33</b> <i>Multidimensional trade related challenges in Africa and Arab regions under regional and multilateral trade agreements</i>  Pg. 30	<b>Session #34</b> <i>Climate Change Policy: Oceania and South America</i>  Pg. 31	<b>*Session #35</b> <i>TPP studies: data development and impact analysis</i>  Pg. 31
<b>1:00-2:30pm</b> (13:00-14:30)	<b>Lunch</b> (Atrium)						
<b>2:30-4:00pm</b> (14:30-16:00)	<b>*Session #36</b> <i>The update of the EU28 Input Output Tables</i>  Pg. 32	<b>Session #37</b> <i>Dynamic Modeling</i>  Pg. 32	<b>Session #38</b> <i>Trade Restrictions</i>  Pg. 33	<b>Session #39</b> <i>Regional Labor Market Issues</i>  Pg. 33	<b>*Session #40</b> <i>Modeling the Economy-Wide Costs and Benefits of Air Quality Improvements</i>  Pg. 33	<b>Session #41</b> <i>Regional Agricultural Policies</i>  Pg. 34	<b>Session #42</b> <i>Trade Policies and Analysis: Middle East and Africa</i>  Pg. 34
<b>4:00-4:30pm</b> (16:00-16:30)	<b>Coffee Break</b> (Atrium)						
<b>4:30-6:30pm</b> (16:30-18:30)	<b>Session #43</b> <i>Land Use and Water</i>  Pg. 35	<b>*Session #44</b> <i>Transport, Tourism, &amp; CGE</i>  Pg. 35	<b>Session #45</b> <i>Dynamic Modeling and Poverty Analysis: Africa</i>  Pg. 36	<b>*Session #46</b> <i>Global Value Chains Analyses</i>  Pg. 36	<b>Session #47</b> <i>Trade Theory and Modeling</i>  Pg. 37	<b>Session #48</b> <i>Demographics</i>  Pg. 37	<b>Session #49</b> <i>Trade: East Asia</i>  Pg. 38
<b>6:30-8:30pm</b> (18:30-20:30)	<b>Reception</b> (Atrium)						

\*Organized Session



## Thursday, June 16

### Presentation Schedule

Presenters (in bold) should arrive 10 minutes prior to the start of their session with their presentation on a USB drive in both PowerPoint and PDF formats. Unless otherwise noted, all parallel and organized session presentations are allotted 30 minutes - 20 for presentation, immediately followed by 10 for discussion.

Looking for a paper? Search by ID# at: <http://www.gtap.agecon.purdue.edu/events/conferences/2016/>

Time	Event	Location
8:30am-5:00pm (8:30-17:00)	Onsite Registration	Front Lobby
9:00-10:30am	Organized Session #22	C1-100
	<p><i>"Uncertainty in Modeling Future Global Economic and Environmental Outcomes"</i>            Organizer: Thomas Hertel            Chair: Dominique van der Mensbrugge</p> <ul style="list-style-type: none"> <li>- <b><u>Predicting Long Term Food Demand, Cropland Use and Prices</u></b> (#4950) by <b>Hertel, Thomas</b>, Uris Lantz Baldos and Dominique van der Mensbrugge</li> <li>- <b><u>Modeling Uncertainty in Climate Change: A Multi-Model Comparison</u></b> (#4954) by <b>Gillingham, Kenneth</b>, William Nordhaus, David Anthoff, Geoffrey Blanford, Valentina Bosetti, Peter Christensen, Haewon McJeon, John Reilly and Paul Sztorc</li> <li>- <b><u>Uncertainty in Forecasts of Long-Run Productivity Growth</u></b> (#5074) by <b>Christensen, Peter</b>, Kenneth Gillingham and William Nordhaus</li> </ul>	
9:00-10:30am	Session #23	C1-200
	<p><i>"Agricultural Policies: Asia"</i>            Chair: Erwin Corong</p> <ul style="list-style-type: none"> <li>- <b><u>The effect of regulatory quality on Indian forest products imports</u></b> (#4988) by <b>Das, Joy</b>, Shaun M. Tanger, Richard Vlosky and P. Lynn Kennedy</li> <li>- <b><u>Regional Economic Consequences of the Chinese Agricultural Support Policies</u></b> (#4942) by <b>Wang, Can (Tsan)</b>, Mahinda Siriwardana and Sam Meng</li> <li>- <b><u>An Economy-wide Analysis of Trade Liberalization Impacts on Rural Household Income in Taiwan</u></b> (#4972) by <b>Hsu, Shih-Hsun</b>, Ching-Cheng Chang, Hsing-Chun Lin, Ruey-Wan Liou, Sheng-Ming Hsu, De-Yan Hsieh and Kuo-Jung Lin</li> </ul>	
9:00-10:30am	Organized Session #24	4-100
	<p><i>"European Union Scenarios"</i>            Organizer/Chair: Marinos Tsigas</p> <ul style="list-style-type: none"> <li>- <b><u>An innovative CGE assessment of the impact of the TTIP including multinationals and Foreign Direct Investment</u></b> (#5034) by <b>Latorre, María C.</b> and Hidemichi Yonezawa</li> <li>- <b><u>Quantifying the impact on EU trade and investment following China's integration strategies: should the EUs FTA policy with ASEAN be pushed?</u></b> (#5060) by <b>Velazquez, Beatriz</b> and Alessandro Antimiani</li> </ul>	

## Thursday, June 16

### Presentation Schedule

Presenters (in bold) should arrive 10 minutes prior to the start of their session with their presentation on a USB drive in both PowerPoint and PDF formats. Unless otherwise noted, all parallel and organized session presentations are allotted 30 minutes - 20 for presentation, immediately followed by 10 for discussion.

Looking for a paper? Search by ID# at: <http://www.gtap.agecon.purdue.edu/events/conferences/2016/>

Time	Event	Location
9:00-10:30am	Session #25	5-100
	<p><i><b>"Trade in Services"</b></i> Chair: Maryla Maliszewska</p> <ul style="list-style-type: none"> <li>- <b><u>Data Localisation: should we be concerned?</u></b> (#5030) by <b>Flaig, Dorothee</b>, Javier Lopez Gonzalez, James Messent and Marie-Agnès Jouanjean</li> <li>- <b><u>Convergence of Asian Regulatory Schemes in the Investment Management Industry</u></b> (#4943) by <b>Creteigny, Laurent</b></li> <li>- <b><u>Employment effects of trade reform in the Vietnamese banking sector</u></b> (#5099) by <b>Dinh, Huong</b></li> </ul>	
9:00-10:30am	Session #26	6-100
	<p><i><b>"Climate Policy and Impacts"</b></i> Chair: Dileep Birur</p> <ul style="list-style-type: none"> <li>- <b><u>The Paris Pledges: Global Implications for Energy Systems and Economic Impact</u></b> (#4933) by Vandyck, Toon, <b>Bert Saveyn</b>, Kimon Keramidas, Alban Kitous and Zoi Vrontisi</li> <li>- <b><u>The implications of irrigation as a planned adaptation measure on an economy wide context</u></b> (#4906) by <b>Parrado, Ramiro</b> and Anna Dellarole</li> <li>- <b><u>Agricultural R&amp;D policy under climate and economic uncertainty</u></b> (#4969) by Cai, Yongyang, <b>Alla Golub</b>, Thomas Hertel and Kenneth Judd</li> </ul>	
9:00-10:30am	Session #27	7-100
	<p><i><b>"Economic Growth and Crisis: South America"</b></i> Chair: Angel Aguiar</p> <ul style="list-style-type: none"> <li>- <b><u>Spillover effects of rural credit: a CGE application for Brazilian regions</u></b> (#5026) by <b>Zanetti De Lima, Cicero</b>, Talita Pinto, Angelo Gurgel and Erly Teixeira</li> <li>- <b><u>Stock-Flow Consistent models for developing countries: The case of Colombia</u></b> (#5102) by <b>Escobar, Andres</b></li> <li>- <b><u>Effects of an external shock on the economy of Bogota, Colombia</u></b> (#5067) by <b>Arguello, Ricardo</b> and Martin Cicowiez</li> </ul>	

## Thursday, June 16

### Presentation Schedule

Presenters (in bold) should arrive 10 minutes prior to the start of their session with their presentation on a USB drive in both PowerPoint and PDF formats. Unless otherwise noted, all parallel and organized session presentations are allotted 30 minutes - 20 for presentation, immediately followed by 10 for discussion.

Looking for a paper? Search by ID# at: <http://www.gtap.agecon.purdue.edu/events/conferences/2016/>

Time	Event	Location
9:00-10:30am	<b>Session #28</b>  <i>"Baseline Development"</i> Chair: Israel Osorio Rodarte  <ul style="list-style-type: none"> <li>- <u><b>Augmenting GTAP database with data on institutional transactions</b></u> (#5012) by <b>Sonmez, Yontem</b> and Scott McDonald</li> <li>- <u><b>Extended Supply-Use Tables in Basic Prices with Firm Heterogeneity: A Proof of Concept for the United States</b></u> (#4907) by <b>Fetzer, James</b>, Thomas F. Howells III, Lin Jones, Erich Strassner and Zhi Wang</li> <li>- <u><b>Direction and Quality of Differentiated-Goods Exports</b></u> (#5094) by <b>Cinquetti, Carlos</b> and Rosane Nunes De Faria</li> </ul>	8-100
10:30-11:00am	Coffee Break	Atrium
11:00am-1:00pm (11:00-13:00)	<b>Session #29</b>  <i>"Energy Modeling"</i> Chair: Alla Golub  <ul style="list-style-type: none"> <li>- <u><b>GTAP-E-Power: An electricity-detailed extension of the GTAP-E model</b></u> (#4891) by <b>Peters, Jeffrey C.</b></li> <li>- <u><b>Energy Pricing Policy Reform and Environmental Quality in Nigeria: A CGE Approach</b></u> (#4945) by <b>Akinyemi, Opeyemi</b>, Philip Alege, Oluseyi Ajayi and Henry Okodua</li> <li>- <u><b>Development of PakistanTIMES Energy Model for Least Cost Power Generation Options</b></u> (#4893) by <b>Das, Gordhan</b>, Uqaili Muhammad Aslam, Memon Hafeez-ur-Rahman, Samo Saleem Raza, Harijan Khanji and Mirjat Nayyar Hussain</li> <li>- <u><b>Estimating summary functions for energy-technologies choice models</b></u> (#5073) by <b>Lugovoy, Oleg</b> and Vladimir Potashnikov</li> </ul>	C1-100

## Thursday, June 16

### Presentation Schedule

Presenters (in bold) should arrive 10 minutes prior to the start of their session with their presentation on a USB drive in both PowerPoint and PDF formats. Unless otherwise noted, all parallel and organized session presentations are allotted 30 minutes - 20 for presentation, immediately followed by 10 for discussion.

Looking for a paper? Search by ID# at: <http://www.gtap.agecon.purdue.edu/events/conferences/2016/>

Time	Event	Location
<b>11:00am-1:00pm</b> (11:00-13:00)	<b>Organized Session #30</b>  <i>"Advances in labor modeling: General equilibrium and micro perspectives"</i> Organizer: Hans Lofgren Chair: Will Martin  <ul style="list-style-type: none"> <li>- <b><u>Labor Specification and Systematic Calibration Biases in Trade Policy Analyses</u></b> (#4976)                by McDonald, Scott, <b>Karen Thierfelder</b> and Terrie Walmsley</li> <li>- <b><u>A New Approach to Labor Mobility in CGE Models with Application to a Sub-Saharan Archetype Country</u></b> (#5088)                by <b>Lofgren, Hans</b> and Martin Cicowicz</li> <li>- <b><u>Simulations of Labor Policies in Tunisia with a Structural Job-Search Model</u></b> (#5082)                by Robalino, David and <b>Michael Weber</b></li> <li>- <b><u>Labor Market Effects of Skill-Biased Technological Change in Malaysia</u></b> (#4959)                by <b>Nilsson, Björn</b> and Mohamed Ali Marouani</li> </ul>	<b>C1-200</b>
<b>11:00am-1:00pm</b> (11:00-13:00)	<b>Session #31</b>  <i>"Food Prices and Security"</i> Chair: Uris Lantz Baldos  <ul style="list-style-type: none"> <li>- <b><u>Productivity and Trade Policy Changes: Food Security Impacts in Selected African Countries</u></b> (#5090)                by Nelgen, Signe and <b>Anna Strutt</b></li> <li>- <b><u>Imported chicken meat in Ghana: A threat for domestic producers and a blessing for consumers?</u></b> (#4999)                by Weible, Daniela and <b>Janine Pelikan</b></li> <li>- <b><u>Can a cereal export ban affect a net food-importing economy? The case of Ethiopia</u></b> (#5004)                by Aragie, Emerta Asaminew, Jean Balié, Emiliano Magrini and <b>Cristian Morales Opazo</b></li> </ul>	<b>4-100</b>

## Thursday, June 16

### Presentation Schedule

Presenters (in bold) should arrive 10 minutes prior to the start of their session with their presentation on a USB drive in both PowerPoint and PDF formats. Unless otherwise noted, all parallel and organized session presentations are allotted 30 minutes - 20 for presentation, immediately followed by 10 for discussion.

Looking for a paper? Search by ID# at: <http://www.gtap.agecon.purdue.edu/events/conferences/2016/>

Time	Event	Location
11:00am-1:00pm (11:00-13:00)	<b>Session #32</b>  <i>"Trade and the Environment"</i> Chair: Alan Fox  <ul style="list-style-type: none"> <li>- <u><b>An effective response to China's emission policy for ASEAN</b></u> (#4873) by <b>Siritorn, Komwit</b></li> <li>- <u><b>Emissions Leakage, Environmental Policy and Trade Frictions</b></u> (#4885) by Holladay, J. Scott, Mohammed Mohsin and <b>Shreekar Pradhan</b></li> <li>- <u><b>China's Choice and its implication: Import meat or soybean</b></u> (#5005) by Li, Shantong and <b>Jianwu He</b></li> <li>- <u><b>The Effects of Restricting Coal Consumption</b></u> (#4924) by <b>Barbe, Andre</b></li> </ul>	5-100
11:00am-1:00pm (11:00-13:00)	<b>Organized Session #33</b>  <i>"Multidimensional trade related challenges in Africa and Arab regions under regional (CFTA, GAFTA,..) and multilateral trade agreements"</i> Organizers: African Trade Policy Centre, UNECA, and the WTO Chairs Programme Chair: Nassim Oulmane Discussant: Mustapha Sadni Jallab  <ul style="list-style-type: none"> <li>- <u><b>Firms, Trade and Employment in Tunisia</b></u> (#5124) by <b>Baghdadi, Leila</b> and Hassen Arouri</li> <li>- <u><b>Impact of Food and Fuel Prices on Poverty in Food Import Dependent and Oil Exporting Economies: The Case of Sultanate of Oman</b></u> (#5125) by Kotagama, Hemesiri, <b>Houcine Boughanmi</b>, H. A. I. Alfarsi and N. S. M. S. Al Hamedi</li> <li>- <u><b>Trade Potential among Morocco and His African Partners Evaluation using an Extended Gravity Model</b></u> (#5126) by Raouf, Radouane and <b>Azzedine Ghoufrane</b></li> <li>- <u><b>Trade Policies, Smuggling, and the Informal Job Market in Francophone Africa. The Case of Pharmaceuticals, Used Cars and Petroleum Products</b></u> (#5127) by <b>Mbaye, Ahmadou Aly</b> and Fatou Guèye</li> </ul>	6-100

## Thursday, June 16

### Presentation Schedule

Presenters (in bold) should arrive 10 minutes prior to the start of their session with their presentation on a USB drive in both PowerPoint and PDF formats. Unless otherwise noted, all parallel and organized session presentations are allotted 30 minutes - 20 for presentation, immediately followed by 10 for discussion.

Looking for a paper? Search by ID# at: <http://www.gtap.agecon.purdue.edu/events/conferences/2016/>

Time	Event	Location
11:00am-1:00pm (11:00-13:00)	<b>Session #34</b>  <i>"Climate Change Policy: Oceania and South America"</i> Chair: Niven Winchester <ul style="list-style-type: none"> <li>- <b><u>Do light vehicle emissions standards promote environmental goals in Australia?</u></b> (#4916) by <b>Wang, Jiayu</b></li> <li>- <b><u>Residential land use, transport and congestion in a computable general equilibrium model</u></b> (#4990) by <b>Lennox, James</b> and Philip Adams</li> <li>- <b><u>Temporal and spatial distribution of global mitigation costs: INDC role and generation equity</u></b> (#4892) by <b>Liu, Jing-Yu</b>, Shinichiro Fujimori and Toshihiko Masui</li> <li>- <b><u>Reductions in land use change and agriculture GHG emissions in Brazil: the Brazilian commitment to COP21</u></b> (#4971) by <b>Ferreira-Filho, Joaquim Bento</b> and Mark Horridge</li> </ul>	7-100
11:00am-1:00pm (11:00-13:00)	<b>Organized Session #35</b>  <i>"TPP studies: data development and impact analysis"</i> Organizer/Chair: Kenichi Kawasaki <ul style="list-style-type: none"> <li>- <b><u>Structure and tariff impact of the TPP agreement</u></b> (#5031) by <b>Mimouni, Mondher</b>, Xavier Pichot, Dzmityr Kniahin and Laetitia Rinderknecht</li> <li>- <b><u>Non-tariff measures and trade restrictiveness: Evidence from a new database</u></b> (#5108) by Bown, Chad, <b>Hiau Looi Kee</b> and Alessandro Nicita</li> <li>- <b><u>Economic Impact of the TPP as Negotiated</u></b> (#4965) by <b>Chen, Shenjie</b> and Catherine Milot</li> <li>- <b><u>Potential Effects of the Trans-Pacific Partnership Agreement on the United States Economy</u></b> (#5095) by Powers, William, <b>Jose Signoret</b>, Marinos Tsigas and Bennet Voorhees</li> </ul>	8-100
1:00-2:30pm (13:00-14:30)	<b>Lunch</b>	<b>Atrium</b>

## Thursday, June 16

### Presentation Schedule

Presenters (in bold) should arrive 10 minutes prior to the start of their session with their presentation on a USB drive in both PowerPoint and PDF formats. Unless otherwise noted, all parallel and organized session presentations are allotted 30 minutes - 20 for presentation, immediately followed by 10 for discussion.

Looking for a paper? Search by ID# at: <http://www.gtap.agecon.purdue.edu/events/conferences/2016/>

Time	Event	Location
2:30-4:00pm (14:30-16:00)	<b>Organized Session #36</b>  <i>"The update of the EU28 Input Output Tables"</i> Organizer/Chair: Bert Saveyn  <ul style="list-style-type: none"> <li>- <b><u>The EU28 GTAP Input-Output Tables</u></b> (#4936) by Rueda-Cantuche, Jose Manuel, Tamas Revesz, Antonio F. Amores, Marian Mraz, Emanuele Ferrari, Alfredo Mainar, Letizia Montinari and <b>Bert Saveyn</b></li> <li>- <b><u>Decomposition of the ESA2010 Eurostat net tax matrices and the transformation to GTAP format</u></b> (#4964) by <b>Revesz, Tamas</b>, Jose Manuel Rueda-Cantuche, Bert Saveyn, Antonio F. Amores and Marian Mraz</li> <li>- <b><u>Analysis of structural patterns in highly disaggregated bio-based sectors on EU member state level with IO multipliers</u></b> (#4932) by <b>Ferrari, Emanuele</b>, Alfredo Mainar, Robert M'barek, George Philippidis and Ana Isabel Sanjuan Lopez</li> </ul>	C1-100
2:30-4:00pm (14:30-16:00)	<b>Session #37</b>  <i>"Dynamic Modeling"</i> Chair: Ken Itakura  <ul style="list-style-type: none"> <li>- <b><u>Informing ex-ante event studies with macro-econometric evidence on the structural and policy impacts of terrorism</u></b> (#4941) by <b>Nassios, Jason</b> and James Giesecke</li> <li>- <b><u>Financial Vulnerability and Export Dynamics</u></b> (#5017) by <b>Kiendrebeogo, Youssouf</b>, Melise Jaud and Marie-Ange Vezanzones-Varoudakis</li> <li>- <b><u>From recursive-dynamic to forward-looking: The importance of allowing for intertemporal investment and net trade adjustments</u></b> (#5065) by <b>Weitzel, Matthias</b>, Edward J. Balistreri and Xiaolin Ren</li> </ul>	C1-200

## Thursday, June 16

### Presentation Schedule

Presenters (in bold) should arrive 10 minutes prior to the start of their session with their presentation on a USB drive in both PowerPoint and PDF formats. Unless otherwise noted, all parallel and organized session presentations are allotted 30 minutes - 20 for presentation, immediately followed by 10 for discussion.

Looking for a paper? Search by ID# at: <http://www.gtap.agecon.purdue.edu/events/conferences/2016/>

Time	Event	Location
2:30-4:00pm (14:30-16:00)	<b>Session #38</b>  <i>"Trade Restrictions"</i> Chair: Janine Pelikan  <ul style="list-style-type: none"> <li>- <b><u>Trade costs and borders in the world of global value chains</u></b> (#4922) by <b>Muradov, Kirill</b></li> <li>- <b><u>Value Added Trade Restrictiveness Indexes. Measuring Protection with Global Value Chains.</u></b> (#5001) by Antimiani, Alessandro, <b>Ilaria Fusacchia</b> and Luca Salvatici</li> <li>- <b><u>The role of export restrictions in agricultural trade</u></b> (#5064) by <b>Estrades, Carmen</b>, Manuel Flores and Guillermo Lezama</li> </ul>	4-100
2:30-4:00pm (14:30-16:00)	<b>Session #39</b>  <i>"Regional Labor Market Issues"</i> Chair: Yontem Sonmez  <ul style="list-style-type: none"> <li>- <b><u>Time use for home activities, market activities and leisure in Ethiopia: economy-wide effects of improved efficiency</u></b> (#4961) by <b>Mosa, Abdulaziz</b>, Khalid Siddig and Harald Grethe</li> <li>- <b><u>Labor market consequences of trade openness and competition in foreign markets</u></b> (#5025) by Chiquiar, Daniel, <b>Enrique Covarrubias</b> and Alejandrina Salcedo</li> </ul>	5-100
2:30-4:00pm (14:30-16:00)	<b>Organized Session #40</b>  <i>"Modeling the Economy-Wide Costs and Benefits of Air Quality Improvements"</i> Organizer/Chair: Alex Marten  <ul style="list-style-type: none"> <li>- <b><u>Key Issues and Challenges in Representing Non-Price Environmental Policies in an Applied General Equilibrium Framework</u></b> (#5018) by Garbaccio, Richard, Alex Marten, <b>Ann Wolverton</b> and et al.</li> <li>- <b><u>Modeling the Economy-Wide Costs of Non-Price Based Environmental Policies in an Applied General Equilibrium Framework</u></b> (#4970) by <b>Garbaccio, Richard</b>, Alex Marten, Ann Wolverton and et al.</li> <li>- <b><u>Modeling the Economy-Wide Benefits of Improvements in Air Quality: Human Capital, Willingness to Pay, and the Role of Spatial Resolution</u></b> (#5050) by <b>Marten, Alex</b></li> </ul>	6-100



## Thursday, June 16

### Presentation Schedule

Presenters (in bold) should arrive 10 minutes prior to the start of their session with their presentation on a USB drive in both PowerPoint and PDF formats. Unless otherwise noted, all parallel and organized session presentations are allotted 30 minutes - 20 for presentation, immediately followed by 10 for discussion.

Looking for a paper? Search by ID# at: <http://www.gtap.agecon.purdue.edu/events/conferences/2016/>

Time	Event	Location
2:30-4:00pm (14:30-16:00)	<b>Session #41</b>  <i>"Regional Agricultural Policies"</i> Chair: Hom Pant  <ul style="list-style-type: none"> <li>- <b><u>A COOL Repeal: Potential Outcomes of U.S. Mandatory Country of Origin Labeling Requirements on Dairy and Beef Sectors</u></b> (#5096) by <b>(Leister) Countryman, Amanda M.</b>, Alessandro Bonanno and Joleen Hadrich</li> <li>- <b><u>Assessing Potential EU Trade Competitiveness from Abolition of the EU dairy quota</u></b> (#4899) by <b>Waschik, Robert</b> and George Philippidis</li> <li>- <b><u>Argentina's Agricultural Reforms: Impacts on Agricultural Growth and Trade</u></b> (#5106) by <b>Valdes, Constanza</b>, Marinos Tsigas and Ariel Nicolás Jorge</li> </ul>	7-100
2:30-4:00pm (14:30-16:00)	<b>Session #42</b>  <i>"Trade Policies and Analysis: Middle East and Africa"</i> Chair: Csilla Lakatos  <ul style="list-style-type: none"> <li>- <b><u>The Lifting of Economic Sanctions on Iran: Global Effects and Strategic Responses</u></b> (#4939) by <b>Ianchovichina, Elena</b>, Shanta Devarajan and Csilla Lakatos</li> <li>- <b><u>Emergence of mega-regional trade agreements and the imperative for African economies to strategically enhance trade-related South-South Cooperation</u></b> (#4886) by <b>Mevel, Simon</b> and Morgane Mathieu</li> <li>- <b><u>Productivity, Exports Performance and Investment Climate: Evidence from Firm Level-Data</u></b> (#4912) by <b>Zaki, Chahir</b></li> </ul>	8-100
4:00-4:30pm (16:00-16:30)	<b>Coffee Break</b>	Atrium

## Thursday, June 16

### Presentation Schedule

Presenters (in bold) should arrive 10 minutes prior to the start of their session with their presentation on a USB drive in both PowerPoint and PDF formats. Unless otherwise noted, all parallel and organized session presentations are allotted 30 minutes - 20 for presentation, immediately followed by 10 for discussion.

Looking for a paper? Search by ID# at: <http://www.gtap.agecon.purdue.edu/events/conferences/2016/>

Time	Event	Location
4:30-6:30pm (16:30-18:30)	<b>Session #43</b>  <i>"Land Use and Water"</i> Chair: Sherman Robinson  <ul style="list-style-type: none"> <li>- <b><u>Land use and economy-wide impacts of improving water use efficiency in South Asia</u></b> (#5052) by Taheripour, Farzad, Thomas Hertel and <b>Sebnem Sahin</b></li> <li>- <b><u>Decomposing Land Use Changes in GTAP-BIO-W Model</u></b> (#5039) by <b>Haqiqi, Iman</b></li> <li>- <b><u>The Impact of Water Scarcity on Food, Deforestation and Bioenergy</u></b> (#4985) by <b>Winchester, Niven</b>, Kirby Ledvina, Kenneth Strzepek and John Reilly</li> <li>- <b><u>Volume preserving CES and CET formulations</u></b> (#5070) by <b>van der Mensbrughe, Dominique</b> and Jeffrey C. Peters</li> </ul>	C1-100
4:30-6:30pm (16:30-18:30)	<b>Organized Session #44</b>  <i>"Transport, Tourism, &amp; CGE"</i> Organizer/Chair: Shane Martin  <ul style="list-style-type: none"> <li>- <b><u>An Integrative Economic-Transport Model Framework for Global Maritime Commodity Flow</u></b> (#4951) by <b>Ong, Ghim Ping</b> and Weng Sut Sou</li> <li>- <b><u>Enhancing GTAP with Tourism Flows and Domestic Transportation Margins</u></b> (#5048) by Martin, Shane and <b>Everett Peterson</b></li> <li>- <b><u>A More Complete Characterization of Transportation Margins in the USAGE Model</u></b> (#5046) by Brown, Daniel, <b>Katherine Harback</b>, Shane Martin, Peter Dixon, James Lennox and Maureen Rimmer</li> <li>- <b><u>Effects of Transportation Infrastructure Reforms on the Export Participation and Composition</u></b> (#5042) by <b>Baniya, Suprabha</b>, Zeynep Akgul and Thomas Hertel</li> </ul>	C1-200

## Thursday, June 16

### Presentation Schedule

Presenters (in bold) should arrive 10 minutes prior to the start of their session with their presentation on a USB drive in both PowerPoint and PDF formats. Unless otherwise noted, all parallel and organized session presentations are allotted 30 minutes - 20 for presentation, immediately followed by 10 for discussion.

Looking for a paper? Search by ID# at: <http://www.gtap.agecon.purdue.edu/events/conferences/2016/>

Time	Event	Location
4:30-6:30pm (16:30-18:30)	<b>Session #45</b>  <i>"Dynamic Modeling and Poverty Analysis: Africa"</i> Chair: Simon Mevel  <ul style="list-style-type: none"> <li>- <b><u>Welfare Decomposition of the Continental Free Trade Area (#4978)</u></b> by <b>Mureverwi, Brian</b> and Trudi Hartzenberg</li> <li>- <b><u>China's Slowdown and Rebalancing: Potential Growth and Poverty Impacts on Sub-Saharan Africa (#4974)</u></b> by <b>Lakatos, Csilla</b>, Maryla Maliszewska, Israel Osorio Rodarte and Delfin S Go</li> <li>- <b><u>Can fuel subsidy reforms in Egypt reduce budget deficit without harming the poor? (#5057)</u></b> by Fathy, Ahmed, <b>Khalid Siddig</b>, Naglaa El-sodany, Asmaa Samieh, Amani Shahin and Noura Abdelwahab</li> <li>- <b><u>Investments in agricultural productivity vs rural commercialization: which way to rapid poverty reduction in Ethiopia? (#4998)</u></b> by <b>Aragie, Emerta Asaminew</b>, Scott McDonald, Emanuele Ferrari and Hasan Dudu</li> </ul>	4-100
4:30-6:30pm (16:30-18:30)	<b>Organized Session #46</b>  <i>"Global Value Chains Analyses"</i> Organizer: Angel Aguiar Chair: Caitlyn Carrico  <ul style="list-style-type: none"> <li>- <b><u>The Similarities and Differences among Three Major Inter-Country Input-Output Databases and their Implications for Trade in Value-Added Estimates (#4919)</u></b> by <b>Jones, Lin</b>, Zhi Wang, Christophe Degain and Xin Li</li> <li>- <b><u>Improving Global Value Chain Analysis: Introducing Tariff Revenues into a GTAP-Based MRIO Framework (#5089)</u></b> by <b>Carrico, Caitlyn</b></li> <li>- <b><u>Characterizing Global Value Chains (#5117)</u></b> by <b>Wang, Zhi</b>, Shang-Jin Wei, Xinding Yu and Kunfu Zhu</li> <li>- <b><u>Trade Facilitation, Global Value Chains and Income Inequality (#5013)</u></b> by <b>Ferraz, Lucas</b>, Leopoldo Gutierrez and Carolina Lemos</li> </ul>	5-100

## Thursday, June 16

### Presentation Schedule

Presenters (in bold) should arrive 10 minutes prior to the start of their session with their presentation on a USB drive in both PowerPoint and PDF formats. Unless otherwise noted, all parallel and organized session presentations are allotted 30 minutes - 20 for presentation, immediately followed by 10 for discussion.

Looking for a paper? Search by ID# at: <http://www.gtap.agecon.purdue.edu/events/conferences/2016/>

Time	Event	Location
<b>4:30-6:30pm</b> (16:30-18:30)	<b>Session #47</b>  <i>"Trade Theory and Modeling"</i> Chair: Brad McDonald  <ul style="list-style-type: none"> <li>- <u><b>Exchange Rates, Trade Integration and Growth: Re-Evaluation of Undervaluation</b></u> (#5080)                by Sokolova, Maria V.</li> <li>- <u><b>Exchange Rates, Numéraires and Real Exchange Rates in Global Computable General Equilibrium Models</b></u> (#5053)                by McDonald, Scott</li> <li>- <u><b>When does specification or aggregation matter for model simulation outcomes? An investigation into demand systems</b></u> (#4995)                by Boysen, Ole</li> <li>- <u><b>Incorporating Modern Trade Theory into CGE Models: Modelling and Estimation</b></u> (#5093)                by Bekkers, Eddy and Joseph Francois</li> </ul>	<b>6-100</b>
<b>4:30-6:30pm</b> (16:30-18:30)	<b>Session #48</b>  <i>"Demographics"</i> Chair: Marcio Cruz  <ul style="list-style-type: none"> <li>- <u><b>Global Migration Revisited: Short-term Pains, Long-term Gains, and the Potential for South-South Migration</b></u> (#4929)                by Ahmed, S. Amer, <b>Delfin S Go</b> and Dirk Willenbockel</li> <li>- <u><b>Estimating World Demand for Calories</b></u> (#4955)                by Gouel, Christophe and Houssein Guimbard</li> <li>- <u><b>Changing Diets in a Changing World: The Impact of Urbanisation on Agriculture</b></u> (#4920)                by Shutes, Lindsay, Monika Verma and Marijke Kuiper</li> </ul>	<b>7-100</b>

## Thursday, June 16

### Presentation Schedule

Presenters (in bold) should arrive 10 minutes prior to the start of their session with their presentation on a USB drive in both PowerPoint and PDF formats. Unless otherwise noted, all parallel and organized session presentations are allotted 30 minutes - 20 for presentation, immediately followed by 10 for discussion.

Looking for a paper? Search by ID# at: <http://www.gtap.agecon.purdue.edu/events/conferences/2016/>

Time	Event	Location
<b>4:30-6:30pm</b> (16:30-18:30)	<b>Session #49</b>  <i>"Trade: East Asia"</i> Chair: Shantong Li  <ul style="list-style-type: none"> <li>- <b><u>Trade and Growth Impact of One Belt, One Road on Asia and the World</u></b> (#5086)                by <b>Villafuerte, James</b>, Erwin Corong and Juzhong Zhuang</li> <li>- <b><u>China's cotton policy and its domestic and world market implications</u></b> (#5002)                by <b>Yu, Wusheng</b> and Hans Grinsted Jensen</li> <li>- <b><u>The Trans-Pacific Partnership Agreement: Implications for the Fishery Sector in Taiwan</u></b>                (#5019)                by <b>Chen, Yi-Chieh</b>, Ching-Cheng Chang and Yu-Chieh Chang</li> <li>- <b><u>The Implications of the Trans-Pacific Partnership for Japan: Agricultural Policy Reforms and Productivity Gains</u></b> (#5049)                by <b>Lee, Hiro</b> and Ken Itakura</li> </ul>	<b>8-100</b>
<b>6:30-8:30pm</b> (18:30-20:30)	<b>Reception</b>  <b>Conference Award Ceremony</b> <ul style="list-style-type: none"> <li>- Partnering Organization Recognition</li> <li>- Sponsor Recognition</li> <li>- Conference Scholarship Recipient Recognition</li> <li>- 2016 Alan A. Powell Award</li> <li>- 2016-2019 GTAP Research Fellows</li> </ul>	<b>Atrium</b>

## Friday, June 17 Session Overview

Full session details for this day are listed on pages 41-48. You can also access the conference schedule through the Eventbase mobile app. See page 2 for details.

	Preston Auditorium	C1-100	C1-200	4-100	5-100	6-100	7-100	8-100
<b>9:00-11:00am</b>		<p><b>*Session #50</b> <i>Harnessing Global Demographic Change for Development: Impacts and Policies</i>  Pg. 41</p>	<p><b>Session #51</b> <i>Climate Impacts on Food and Agriculture</i>  Pg. 41</p>	<p><b>Session #52</b> <i>Climate Change Policy: European Union</i>  Pg. 42</p>	<p><b>Session #53</b> <i>Economic Growth and Dynamic Modeling: Europe and Oceania</i>  Pg. 42</p>	<p><b>*Session #54</b> <i>Integrated Modeling of the Food-energy-water Nexus</i>  Pg. 43</p>	<p><b>Session #55</b> <i>Trade Arrangements and Model Validation: Europe and the Americas</i>  Pg. 43</p>	<p><b>Session #56</b> <i>Labor Market Issues: Africa</i>  Pg. 44</p>
<b>11:00-11:30am</b>	<b>Coffee Break (Atrium)</b>							
<b>11:30am-1:00pm</b> (11:30-13:00)		<p><b>*Session #57</b> <i>Economic effects of cross-border migration</i>  Pg. 44</p>	<p><b>Session #58</b> <i>Trade Agreements and Negotiations</i>  Pg. 45</p>	<p><b>Session #59</b> <i>Climate Impacts and Water</i>  Pg. 45</p>	<p><b>*Session #60</b> <i>Looking at Regional Trade Agreements through the Firm Heterogeneity Lens</i>  Pg. 46</p>	<p><b>Session #61</b> <i>Agricultural Policies: Africa</i>  Pg. 46</p>	<p><b>Session #62</b> <i>Land Use</i>  Pg. 47</p>	<p><b>Session #63</b> <i>Foreign Direct Investment</i>  Pg. 47</p>
<b>1:00-2:30pm</b> (13:00-14:30)	<b>Lunch (Atrium)</b>							
<b>2:30-4:00pm</b> (14:30-16:00)	<p><b>Plenary Session</b> <i>Pushing the Frontier on Integrated Assessment Modeling</i>  Pg. 48</p>							
<b>4:00-4:30pm</b> (16:00-16:30)	<p><b>Closing Ceremony</b>  Pg. 48</p>							

\*Organized Session

**Friday, June 17 – 2:30-4:00pm**  
**Plenary Session: “Pushing the Frontier on Integrated Assessment Modeling”**

***“The Need for Broader Multi-Disciplinary Information in Integrated Assessment”***



**Michael Toman**

Research Manager, Environment and Energy Research Program, Development Research Group  
The World Bank

<http://www.worldbank.org/en/about/people/michael-toman>

Michael Toman (Mike) is Lead Economist on Climate Change in the Development Research Group and Manager of the Energy and Environment Team. His current research interests include alternative energy resources, policies for responding to risks of climate change catastrophes, timing of investments for greenhouse gas reduction, and mechanisms for mitigating greenhouse gas emissions through reduced deforestation. During his career Mike has done extensive research on climate change economics and policy, energy markets and policy, environmental policy instruments, and approaches to achieving sustainable development. Prior to joining the World Bank in fall 2008,

he held senior analytical and management positions at RAND Corporation, Inter-American Development Bank, and Resources for the Future. His teaching experience includes adjunct positions at the Johns Hopkins School of Advanced International Studies and the School of the Environment, University of California at Santa Barbara. Mike has a B.A. from Indiana University, a M.Sc. in applied mathematics from Brown University, and M.A. and Ph.D. degrees in economics from the University of Rochester.

***“Data and Modeling Challenges for the Next Generation of Integrated Assessment Research”***



**James (Jae) Edmonds**

Chief Scientist and Battelle Fellow, Pacific Northwest National Laboratory, Joint Global Change Research Institute  
Adjunct Professor of Public Policy, University of Maryland at College Park

[http://www.pnl.gov/science/staff/staff\\_info.asp?staff\\_num=5689](http://www.pnl.gov/science/staff/staff_info.asp?staff_num=5689)

Jae Edmonds is a Chief Scientist and Battelle Fellow at the Pacific Northwest National Laboratory's (PNNL) Joint Global Change Research Institute, and Adjunct Professor of Public Policy at the University of Maryland at College Park. Dr. Edmonds is the principal investigator for the Global Energy Technology Strategy Program to Address Climate Change, an international, public-private research collaboration. His research in the areas of long-term, global, energy, economy, and climate change spans three decades, during which time he published several books, numerous scientific papers and made countless presentations. His most recent book, Global Energy Technology

Strategy, Addressing Climate Change, distills more than a decade of research on the role of technology in addressing climate change. Dr. Edmonds has served in the capacity of Lead Author on every major IPCC assessment to date and presently serves on the IPCC Steering Committee on "New Integrated Scenarios." He serves on numerous panels and advisory boards related to energy, technology, the economy and climate change.

## Friday, June 17

### Presentation Schedule

Presenters (in bold) should arrive 10 minutes prior to the start of their session with their presentation on a USB drive in both PowerPoint and PDF formats. Unless otherwise noted, all parallel and organized session presentations are allotted 30 minutes - 20 for presentation, immediately followed by 10 for discussion.

Looking for a paper? Search by ID# at: <http://www.gtap.agecon.purdue.edu/events/conferences/2016/>

Time	Event	Location
9:00-11:00am	<b>Organized Session #50</b>  <i>"Harnessing Global Demographic Change for Development: Impacts and Policies"</i> Organizer/Chair: S. Amer Ahmed  <ul style="list-style-type: none"> <li>- <b><u>On the impact of Demographic Change on Growth, Poverty and Shared Prosperity (#5068)</u></b> by <b>Cruz, Marcio</b> and S. Amer Ahmed</li> <li>- <b><u>Cashing in the demographic dividend (#5085)</u></b> by <b>Maliszewska, Maryla</b>, S. Amer Ahmed, Marcio Cruz and Alan Winters</li> <li>- <b><u>Making the Most of Demographic Change in Southern Africa (#5087)</u></b> by <b>Ahmed, S. Amer</b> and Marcio Cruz</li> <li>- <b><u>Capitalizing on the Demographic Dividend in Asia-Pacific (#4966)</u></b> by <b>Mirza, Tasneem</b>, Thangavel Palanivel and Andrew Mason</li> </ul>	C1-100
9:00-11:00am	<b>Session #51</b>  <i>"Climate Impacts on Food and Agriculture"</i> Chair: Everett Peterson  <ul style="list-style-type: none"> <li>- <b><u>Welfare Changes from Climate Change Impacts on the Agricultural Sector: New Damage Functions from Over 1000 Yield Studies (#5056)</u></b> by <b>Moore, Frances</b>, Uris Lantz Baldos, Thomas Hertel and Delavane Diaz</li> <li>- <b><u>Global food and environmental impacts under climate change: An application of gridded agricultural economic modelling (#5063)</u></b> by <b>Baldos, Uris Lantz</b></li> <li>- <b><u>The health co-benefits of a global greenhouse-gas tax on food (#5038)</u></b> by <b>Springmann, Marco</b>, Daniel Mason-D'Croz, Sherman Robinson, Keith Wiebe and Peter Scarborough</li> <li>- <b><u>Crop Yields, Food Security, and GHG Emissions: An Analysis of Global Mitigation Options for Rice Cultivation (#5045)</u></b> by <b>Creason, Jared</b>, Robert Beach, Zekarias Hussein, Shaun Ragnauth, Sara Ohrel, Changsheng Li and William Salas</li> </ul>	C1-200



## Friday, June 17

### Presentation Schedule

Presenters (in bold) should arrive 10 minutes prior to the start of their session with their presentation on a USB drive in both PowerPoint and PDF formats. Unless otherwise noted, all parallel and organized session presentations are allotted 30 minutes - 20 for presentation, immediately followed by 10 for discussion.

Looking for a paper? Search by ID# at: <http://www.gtap.agecon.purdue.edu/events/conferences/2016/>

Time	Event	Location
9:00-11:00am	<b>Session #52</b>  <i>"Climate Change Policy: European Union"</i> Chair: Alessandro Antimiani <ul style="list-style-type: none"> <li>- <b><u>Combining Price and Quantity Controls under Partitioned Environmental Regulation</u></b> (#4869) by Abrell, Jan and <b>Sebastian Rausch</b></li> <li>- <b><u>Minimum Prices in the European Emissions Trading System</u></b> (#4898) by Abrell, Jan, Sebastian Rausch and <b>Hidemichi Yonezawa</b></li> <li>- <b><u>Identifying the main uncertainty drivers of energy security in a low-carbon world: The case of Europe</u></b> (#5112) by Guivarch, Celine and <b>Stéphanie Monjon</b></li> <li>- <b><u>Environmental targets, economic effects and social impacts- How sustainable is the German way from a fossil to a renewable energy supply system?</u></b> (#4956) by <b>Rothe, Andrea</b> and Scott McDonald</li> </ul>	4-100
9:00-11:00am	<b>Session #53</b>  <i>"Economic Growth and Dynamic Modeling: Europe and Oceania"</i> Chair: Maureen Rimmer <ul style="list-style-type: none"> <li>- <b><u>An Economic Analysis of The Circular Economy</u></b> (#4937) by <b>Tuladhar, Sugandha</b>, Mei Yuan and W. David Montgomery</li> <li>- <b><u>Growth, Expectations and Structural Change - The Dixon - Wilcoxon - Malakellis -Model Re-Visited</u></b> (#5000) by <b>Honkatukia, Juha</b></li> <li>- <b><u>Options for Reforming Australia's Goods and Services Tax</u></b> (#4944) by <b>Verikios, George</b>, Jodie Patron, Mohammad Reza Gharibnavaz and Ashley Winston</li> <li>- <b><u>A financial CGE assessment of the impact of a rise in commercial bank capital adequacy ratios</u></b> (#4977) by <b>Giesecke, James</b>, Peter Dixon and Maureen Rimmer</li> </ul>	5-100

## Friday, June 17

### Presentation Schedule

Presenters (in bold) should arrive 10 minutes prior to the start of their session with their presentation on a USB drive in both PowerPoint and PDF formats. Unless otherwise noted, all parallel and organized session presentations are allotted 30 minutes - 20 for presentation, immediately followed by 10 for discussion.

Looking for a paper? Search by ID# at: <http://www.gtap.agecon.purdue.edu/events/conferences/2016/>

Time	Event	Location
9:00-11:00am	<b>Organized Session #54</b>  <i>"Integrated Modeling of the Food-energy-water Nexus"</i> Organizer/Chair: Jing Liu  <ul style="list-style-type: none"> <li>- <b><u>An integrated assessment of water scarcity effects on energy and land use decisions and mitigation policies</u></b> (#5107) by <b>Edmonds, James</b> and Katherine Calvin</li> <li>- <b><u>The IMPACT Model: A Global Simulation Modelling System for Analysis of Water-Economy Links in Climate Change Scenarios</u></b> (#5020) by <b>Robinson, Sherman</b>, Daniel Mason-D'Croze and Tingju Zhu</li> <li>- <b><u>Achieving Sustainable Irrigation Water Withdrawals: Global Impacts on Food Production and Land Use</u></b> (#4915) by <b>Liu, Jing</b>, Thomas Hertel, Richard Lammers, Alexander Prusevich, Uris Lantz Baldos, Danielle Grogan and Steve Frolking</li> <li>- <b><u>Combining the best of two worlds - An integrative water modelling approach</u></b> (#5023) by <b>Luckmann, Jonas</b>, Ami Reznik, Eli Feinerman, Israel Finkelshtain, Harald Grethe and Iddo Kan</li> </ul>	6-100
9:00-11:00am	<b>Session #55</b>  <i>"Trade Arrangements and Model Validation: Europe and the Americas"</i> Chair: Carmen Estrades  <ul style="list-style-type: none"> <li>- <b><u>Ukraine's unconsidered losses from the annexation of Crimea: What should we account for in the DCFTA forecasts?</u></b> (#4949) by Olekseyuk, Zoryana and <b>Hannah Schuereberg-Frosch</b></li> <li>- <b><u>Analyzing the trade effects of the Transatlantic Trade and Investment Partnership between the EU and the US: Do we need to care about agricultural domestic support?</u></b> (#5007) by <b>Urban, Kirsten</b>, Ole Boysen, Martina Brockmeier, Tanja Engelbert, Hans Grinsted Jensen and Badri Narayanan</li> <li>- <b><u>Quantitative trade models and the economic assessment of TTIP</u></b> (#5043) by Bekkers, Eddy and <b>Hugo Rojas-Romagosa</b></li> <li>- <b><u>Impacts of expenditures on research and development on the Brazilian economy: A CGE approach</u></b> (#5010) by Pio, João, Fernando Perobelli and <b>Alexandre Gomes</b></li> </ul>	7-100

## Friday, June 17

### Presentation Schedule

Presenters (in bold) should arrive 10 minutes prior to the start of their session with their presentation on a USB drive in both PowerPoint and PDF formats. Unless otherwise noted, all parallel and organized session presentations are allotted 30 minutes - 20 for presentation, immediately followed by 10 for discussion.

Looking for a paper? Search by ID# at: <http://www.gtap.agecon.purdue.edu/events/conferences/2016/>

Time	Event	Location
9:00-11:00am	<b>Session #56</b>  <i>"Labor Market Issues: Africa"</i> Chair: Terrie Walmsley <ul style="list-style-type: none"> <li>- <b><u>Public policies promoting the informal economy: effects on incomes, employment and growth in Burkina Faso (#4914)</u></b> by <b>Traore, Abel</b> and Idrissa Ouedraogo</li> <li>- <b><u>Welfare and Employment Effects of Services Trade Liberalization: The Case of the ACP- EU Agreement (#5021)</u></b> by <b>Rakotoarisoa, Manitra A.</b></li> <li>- <b><u>Employment impacts of technological innovations in sub-Saharan Africa: Firm-level evidence. (#4947)</u></b> by <b>Avenyo, Elvis</b></li> <li>- <b><u>Incorporating vocational training systems in CGE models (#5029)</u></b> by <b>Mohammed, Zuhail</b>, Khalid Siddig and Harald Grethe</li> </ul>	8-100
11:00-11:30am	<b>Coffee Break</b>	<b>Atrium</b>
11:30am-1:00pm (11:30-13:00)	<b>Organized Session #57</b>  <i>"Economic effects of cross-border migration"</i> Organizer/Chair: Angel Aguiar <ul style="list-style-type: none"> <li>- <b><u>The economics of the Syrian refugee crisis: The case of Lebanon (#5032)</u></b> by <b>David, Anda</b>, Mohamed Ali Marouani, Charbel Nahas and Björn Nilsson</li> <li>- <b><u>Regional and Global Impacts of Skill Mobility within the ASEAN Economic Community (#5066)</u></b> by <b>Corong, Erwin</b> and Angel Aguiar</li> <li>- <b><u>Migration Response to Oil Price Volatility: A Dynamic Simulation of Migration from South and Southeast Asia to the GCC (#5059)</u></b> by <b>Aguiar, Angel</b>, Caitlyn Carrico and S. Amer Ahmed</li> </ul>	C1-100

## Friday, June 17

### Presentation Schedule

Presenters (in bold) should arrive 10 minutes prior to the start of their session with their presentation on a USB drive in both PowerPoint and PDF formats. Unless otherwise noted, all parallel and organized session presentations are allotted 30 minutes - 20 for presentation, immediately followed by 10 for discussion.

Looking for a paper? Search by ID# at: <http://www.gtap.agecon.purdue.edu/events/conferences/2016/>

Time	Event	Location
<b>11:30am-1:00pm</b> (11:30-13:00)	<b>Session #58</b>  <i>"Trade Agreements and Negotiations"</i> Chair: Russell Hillberry  <ul style="list-style-type: none"> <li>- <b><u>Analyzing the Infrastructure Impacts of Free Trade Agreements</u></b> (#4962) by <b>Bachmann, Christian</b></li> <li>- <b><u>Border Crossing for Trucks Twenty Years after NAFTA</u></b> (#5069) by <b>Fox, Alan</b> and Pilar Londono-Kent</li> <li>- <b><u>What Has Been Left to Multilateralism to Negotiate On?</u></b> (#5016) by Bureau, Christophe, Houssein Guimbard and <b>Sébastien Jean</b></li> </ul>	<b>C1-200</b>
<b>11:30am-1:00pm</b> (11:30-13:00)	<b>Session #59</b>  <i>"Climate Impacts and Water"</i> Chair: Glyn Wittwer  <ul style="list-style-type: none"> <li>- <b><u>Climate Change, Food Production, and Welfare</u></b> (#5071) by Haqiqi, Iman, <b>Farzad Taheripour</b> and Dominique van der Mensbrugge</li> <li>- <b><u>Consequences of global climate change on future hydropower generation</u></b> (#4987) by <b>Zhou, Qian</b>, Naota Hanasaki, Shinichiro Fujimori, Yoshimitsu Masaki and Yasuaki Hijioka</li> <li>- <b><u>The potential of water markets to allocate water between industry, agriculture, and public water utilities as an adaptation mechanism to climate change</u></b> (#4968) by <b>Levin-Koopman, Jason</b>, Onno Kuik, Richard Tol and Roy Brouwer</li> </ul>	<b>4-100</b>

## Friday, June 17

### Presentation Schedule

Presenters (in bold) should arrive 10 minutes prior to the start of their session with their presentation on a USB drive in both PowerPoint and PDF formats. Unless otherwise noted, all parallel and organized session presentations are allotted 30 minutes - 20 for presentation, immediately followed by 10 for discussion.

Looking for a paper? Search by ID# at: <http://www.gtap.agecon.purdue.edu/events/conferences/2016/>

Time	Event	Location
11:30am-1:00pm (11:30-13:00)	<b>Organized Session #60</b>  <i>"Looking at Regional Trade Agreements through the Firm Heterogeneity Lens"</i> Organizer: Zeynep Akgul Chair: Roberto Roson  <ul style="list-style-type: none"> <li>- <b><u>Heterogeneous Firms, Non-tariff Measures, and US Beef Trade</u></b> (#5083) by <b>Akgul, Zeynep</b>, Thomas Hertel and Nelson Villoria</li> <li>- <b><u>Converting an Armington model into a Melitz model</u></b> (#5077) by <b>Dixon, Peter</b>, Michael Jerie and Maureen Rimmer</li> <li>- <b><u>Trade Response of Armington-Krugman-Melitz Encompassing Module in a CGE Model: Case of the Trans-Pacific Partnership Agreement</u></b> (#5097) by <b>Itakura, Ken</b> and Kazuhiko Oyamada</li> </ul>	5-100
11:30am-1:00pm (11:30-13:00)	<b>Session #61</b>  <i>"Agricultural Policies: Africa"</i> Chair: Amanda M. (Leister) Countryman  <ul style="list-style-type: none"> <li>- <b><u>Developing Effective and Growth-Sustaining Agribusiness Markets in Sub-Saharan Africa</u></b> (#5084) by <b>Ehui, Simeon</b>, Marinos Tsigas and Chakib Jenane</li> <li>- <b><u>Are investments in agricultural infrastructure really boosting farmers' market access in Sub Saharan Africa?</u></b> (#5009) by <b>Balié, Jean</b>, Signe Nelgen, Badri Narayanan and Anna Strutt</li> </ul>	6-100

## Friday, June 17

### Presentation Schedule

Presenters (in bold) should arrive 10 minutes prior to the start of their session with their presentation on a USB drive in both PowerPoint and PDF formats. Unless otherwise noted, all parallel and organized session presentations are allotted 30 minutes - 20 for presentation, immediately followed by 10 for discussion.

Looking for a paper? Search by ID# at: <http://www.gtap.agecon.purdue.edu/events/conferences/2016/>

Time	Event	Location
<b>11:30am-1:00pm</b> (11:30-13:00)	<b>Session #62</b>  <i>"Land Use"</i> Chair: Christophe Gouel  <ul style="list-style-type: none"> <li>- <b><u>Estimating the impact of fertilizer support policies: A CGE approach</u></b> (#4901)                by <b>Bartelings, Heleen</b>, Aikaterini Kavallari, Hans van Meijl and Martin Von Lampe</li> <li>- <b><u>Using a CGE Model for analyzing the Macroeconomic impact of the Grand Paris Express project on the Ile-de-France Region</u></b> (#4875)                by <b>Hadj Salem, Haykel</b>, Aboukacem El-Mehdi, Hubert Jayet, Quentin David, Hakim Hammadou and Moez Kilani</li> <li>- <b><u>Linking Natural Resources to the CGE framework: the case of Land Use Changes in the EPPA Model</u></b> (#4934)                by <b>Gurgel, Angelo</b>, Y.-H. Henry Chen, Sergey Paltsev and John Reilly</li> </ul>	<b>7-100</b>
<b>11:30am-1:00pm</b> (11:30-13:00)	<b>Session #63</b>  <i>"Foreign Direct Investment"</i> Chair: Michael Ferrantino  <ul style="list-style-type: none"> <li>- <b><u>Expanding Multinationals - Conglomerate M&amp;A and Activity-Basket Proximity</u></b> (#4917)                by <b>Ray, Anna</b></li> <li>- <b><u>Production Patterns of Multinational Enterprises: The Knowledge-Capital Model Revisited</u></b> (#4876)                by <b>Oyamada, Kazuhiko</b></li> <li>- <b><u>Corporate Income Tax Reform in the EU</u></b> (#4918)                by <b>Álvarez-Martínez, María Teresa</b>, Salvador Barrios, <b>Maria Gesualdo</b>, Dimitrios Pontikakis and Jon Pycroft</li> </ul>	<b>8-100</b>
<b>1:00-2:30pm</b> (13:00-14:30)	<b>Lunch</b>	<b>Atrium</b>

## Friday, June 17

### Presentation Schedule

Presenters (in bold) should arrive 10 minutes prior to the start of their session with their presentation on a USB drive in both PowerPoint and PDF formats. Unless otherwise noted, all parallel and organized session presentations are allotted 30 minutes - 20 for presentation, immediately followed by 10 for discussion.

Looking for a paper? Search by ID# at: <http://www.gtap.agecon.purdue.edu/events/conferences/2016/>

Time	Event	Location
<b>2:30-4:00pm</b> (14:30-16:00)	<b>Plenary Session</b>  <i>"Pushing the Frontier on Integrated Assessment Modeling"</i> Chair: Richard Garbaccio  <ul style="list-style-type: none"> <li>- <b>The Need for Broader Multi-Disciplinary Information in Integrated Assessment</b> by <b>Toman, Michael</b></li> <li>- <b>Data and Modeling Challenges for the Next Generation of Integrated Assessment Research</b> by <b>Edmonds, James</b></li> </ul>	<b>Preston Auditorium</b>
<b>4:00-4:30pm</b> (16:00-16:30)	<b>Closing Ceremony</b>  <ul style="list-style-type: none"> <li>- <b>Dominique van der Mensbrughe</b>, Director and Research Professor, Center for Global Trade Analysis, Purdue University</li> <li>- <b>2017 Conference Preview</b> by <b>van der Mensbrughe, Dominique</b></li> </ul>	<b>Preston Auditorium</b>



## Saturday, June 18 Post-Conference Event

### Potomac River Cruise to Mount Vernon

A visit to the home of George Washington is a great American adventure everyone should experience, especially when you can do it by boat! Enjoy a leisurely narrated cruise while taking in the beautiful scenery along the Potomac River during the cruise to the Mount Vernon estate.

For those individuals who registered and paid to participate in this event, please make note of the following schedule.



Time	Details
8:15am	<b>Boarding time (Spirit Cruises, Pier 4, Water Street SW, Washington DC)</b> <i>Participants are responsible for making their own transportation arrangements to the dock.</i>
8:30-10:00am	<b>Potomac River Cruise to Mount Vernon</b>
<b>10:00am - 1:00pm</b> (10:00-13:00)	<b>Exploring Mount Vernon</b> <i>Participants can take a guided tour or explore the estate grounds on their own. Participants are responsible for purchasing their own lunch at Mount Vernon.</i>
<b>1:00pm</b> (13:00)	<b>Boarding time</b>
<b>1:30-3:00pm</b> (13:30-15:00)	<b>Potomac River Cruise returns to DC</b> <i>Participants are responsible for making their own transportation arrangements from the dock.</i>

### Weather

Temperatures in June can range from lows near 65°F (18 C) to 86°F (30 C). Rain is also always a possibility.

### What to Bring

Much of the tour will be outdoors; therefore, participants should wear comfortable clothing. While food is not allowed in the historic area or in the Mount Vernon Museum and Education Center, water bottles are encouraged. Water fountains are also located around the historic area for refills. Strollers are welcomed, but are not allowed on the Mansion tour. Photography is encouraged in all areas except the Mansion interior and the Museum. Cash and/or credit card (Visa, MasterCard) are accepted for dining.

## Participant List

<b>Name</b>	<b>Organization</b>	<b>Country</b>	<b>Email</b>
A, Lakshmi	Indira Gandhi Institute of Development Research (IGIDR)	India	lakshmia@igidr.ac.in
Abu, Godwin	University of agriculture	Nigeria	goddy_master@yahoo.co.uk
Abu-Goodman, Maryam	Eastern Mediterranean University	Turkey	sumpts777@gmail.com
Adams, Philip	Victoria University	Australia	philip.adams@vu.edu.au
Adebusuyi, Adebisi (Bisi)	Kingston University	United Kingdom	adebisiedun@gmail.com
Adebusuyi, Adebowale	Kingston University, London	United Kingdom	adebowaleadebusuyi@gmail.com
Aeroe, Anders	International Trade Centre (ITC)	Switzerland	aeroe@intracen.org
Agbahey, Johanes	Humboldt-Universität zu Berlin	Germany	johanes.agbahey@hu-berlin.de
Aguiar, Angel	Center for Global Trade Analysis, Purdue University	United States	aaguiar@purdue.edu
Ahmed, Raj Farouq	MENDEL UNIVERSITY IN BRNO	Czech Republic	farouqrajahmed@gmail.com
Ahmed, S. Amer	The World Bank	United States	sahmed20@worldbank.org
Akel, A. Emre	The Ministry of Economy	Turkey	emreakel@gmail.com
Akgul, Zeynep	Center for Global Trade Analysis, Purdue University / USITC	United States	zakgul@purdue.edu
Akinyemi, Opeyemi	Covenant University	Nigeria	opeoluwatosin@gmail.com
Alexandre, Jean-Wilner	Essex County College	United States	jalexan5@essex.edu
Alshamrani, Abdulaziz	King Saud University	Saudi Arabia	alshamrani@gwu.edu
Antimiani, Alessandro	Università degli Studi Roma Tre	Italy	alessandro.antimiani@crea.gov.it
Aragie, Emerta Asaminew	Food And Agricultural Organization (FAO)	Italy	emertas@yahoo.com
Arguello, Ricardo	Universidad del Rosario	Colombia	arguello.ricardo@gmail.com
Avenyo, Elvis	Maastricht University/ UNU-MERIT	The Netherlands	avenyo@merit.unu.edu
Bachmann, Christian (Chris)	University of Waterloo	Canada	chris.bachmann@uwaterloo.ca
Baghdadi, Leila	Tunis Business School, University of Tunis	Tunisia	leila.baghdadi@tbs.rnu.tn
Baldos, Uris Lantz	Center for Global Trade Analysis, Purdue University	United States	ubaldos@purdue.edu
Balié, Jean	Food and Agriculture Organization of the United Nations	France	jean.balie@fao.org
Balistreri, Edward J.	Colorado School of Mines	United States	ebalistr@mines.edu
Banerjee, Onil	Inter-American Development Bank	United States	onilb@iadb.org
Baniya, Suprabha	Purdue University	United States	sbaniya@purdue.edu
Banse, Martin	Thünen Institute of Market Analysis (TI)	Germany	martin.banse@ti.bund.de
Barbe, Andre	International Trade Commission	United States	andre.barbe@usitc.gov

## Participant List

<b>Name</b>	<b>Organization</b>	<b>Country</b>	<b>Email</b>
Bartelings, Heleen	LEI	The Netherlands	heleen.bartelings@wur.nl
Batistich, Mary Kate	Purdue University	United States	mbatisti@purdue.edu
Batta, Ginger	Center for Global Trade Analysis, Purdue University	United States	gbatta@purdue.edu
Bchir, Mohamed Hedi	UN Economic and Social Commission for Western Asia (UNESCWA)	Lebanon	hedi.bchir@gmail.com
Beckman, Jayson	USDA/ERS	United States	JBeckman@ers.usda.gov
Bekkers, Eddy	University of Bern	Switzerland	eddybekkers@gmail.com
Bellora, Cecilia	INRA - UMR Economie Publique	France	cecilia.bellora@cepii.fr
Birur, Dileep	McKinsey and Company	United States	dbirur@gmail.com
Bistafa, Rafael	Rosenberg Associados	Brazil	rafaelbistafa@gmail.com
Boughanmi, Houcine	Sultan Qaboos University	Oman	boughanh@squ.edu.om
Boysen, Ole	University of Hohenheim	Germany	o.boysen@uni-hohenheim.de
Bradford, Scott	Brigham Young University	United States	bradford@byu.edu
Brockmeier, Martina	University of Hohenheim	Germany	martina.brockmeier@uni-hohenheim.de
Brown, Daniel	Mitre Corporation	United States	dtbrown@mitre.org
Burfisher, Mary	Center for Global Trade Analysis, Purdue University	United States	burfisher@gmail.com
Bussieck, Michael	GAMS Development Corporation	United States	mbussieck@gams.com
Calvin, Katherine (Kate)	Pacific Northwest National Laboratory	United States	katherine.calvin@pnnl.gov
Carrico, Caitlyn	Center for Global Trade Analysis, Purdue University	United States	carrico@purdue.edu
Cernat, Lucian	European Commission - DG Trade	Belgium	lucian.cernat@ec.europa.eu
Chambers, Arthur	US International Trade Commission	United States	arthur.chambers@usitc.gov
Charles, Alexandra	UNIVERSITE NOTRE DAME D'HAITI	Haiti	alexandracharles09@yahoo.fr
Chateau, Jean	OECD Environment Directorate	France	jean.chateau@oecd.org
Chen, Shenjie	DFAIT	Canada	shenjie.chen@international.gc.ca
Chen, Yichieh	Center for Water Resources Management and Policy Research	Taiwan (ROC)	olikeblueo@gmail.com
Christensen, Peter	Agricultural and Consumer Economics, University of Illinois	United States	pchrist@illinois.edu
Cicowiez, Martin	CEDLAS-Universidad Nacional de La Plata	Argentina	martin@depeco.econo.unlp.edu.ar
Cinquetti, Carlos	UNESP	Brazil	cinquett@fclar.unesp.br
Corong, Erwin	Center for Global Trade Analysis, Purdue University	United States	ecorong@purdue.edu
Coulibaly, Adama Ekberg	UNECA	Ethiopia	acoulibaly@uneca.org

## Participant List

<b>Name</b>	<b>Organization</b>	<b>Country</b>	<b>Email</b>
Countryman, Amanda M. (Leister)	Colorado State University	United States	amanda.leister@colostate.edu
Covarrubias, Enrique	Banco de Mexico	Mexico	enriquecovarr@gmail.com
Creason, Jared	US EPA	United States	creason.jared@epa.gov
Creteigny, Laurent	KPMG Australia	Australia	lcreteigny@kpmg.com.au
Cruz, Marcio	The World Bank	United States	mvargasdacruz@worldbank.org
Das, Gordhan	Department of Mechanical Engineering,	Pakistan	valasai@gmail.com
Das, Joy	Department of Agricultural Economics and Agribusiness	United States	jdas2@lsu.edu
David, Anda	AFD	France	davida@afd.fr
de la Chesnaye, Francisco	Electric Power Research Institute	United States	fdelachesnaye@epri.com
Delpiazzo, Elisa	Euro-Mediterranean Centre on Climate Change Fundation	Italy	elisa.delpiazzo@feem.it
Deng, Mengzhi	Henan Agricultural University	China	dengmz@163.com
Devarajan, Shanta	World Bank, African Region	United States	sdevarajan@worldbank.org
Dinh, Huong	Research School of Economics, Australian National University	Australia	huong.dinh@anu.edu.au
Dirkse, Steven	GAMS Development Corporation	United States	sdirkse@gams.com
Dixon, Peter	Victoria University	Australia	peter.dixon@vu.edu.au
Donaldson, Dave	Stanford University	United States	ddonald@stanford.edu
Dos Santos Fachinelli Ferrarini, Angel	Universidade de São Paulo	Brazil	angel.fachinelli@gmail.com
Edmonds, James (Jae)	Pacific Northwest Nat'l Lab, Joint Global Change Research Institute	United States	jae@pnnl.gov
Eghan, Jonathan Ronald Muller	Mendel University	Czech Republic	ronmull020@gmail.com
Ehui, Simeon	The World Bank	United States	sehui@worldbank.org
Elshennawy, Abeer	The American University in Cairo	Egypt	ashenawy@aucegypt.edu
Escobar, Andres	Universidad de Cartagena, Campus Piedra de Bolívar	Colombia	aescobare@unicartagena.edu.co
Estrades, Carmen	Department of Economics, Universidad de la Republica	Uruguay	carmen.estrades@gmail.com
Evans, David	USEPA	United States	evans.davida@epa.gov
Federici, Daniel	University of North Carolina at Charlotte	United States	dfederic@uncc.edu
Ferrantino, Michael	US International Trade Commission (USITC)	United States	mferrantino@worldbank.org
Ferrari, Emanuele	European Commission - JRC - IPTS	Spain	emanuele.ferrari@ec.europa.eu
Ferraz, Lucas	São Paulo School of Economics - Getulio Vargas Foundation	Brazil	lucas.ferraz@fgv.br
Ferreira-Filho, Joaquim Bento	Escola Superior de Agricultura Luiz de Queiroz	Brazil	jbsferre@usp.br

## Participant List

<b>Name</b>	<b>Organization</b>	<b>Country</b>	<b>Email</b>
Fetzer, James (Jim)	Bureau of Economic Analysis	United States	James.Fetzer@bea.gov
Feuerbacher, Arndt	University of Hohenheim	Germany	a.feuerbacher@uni-hohenheim.de
Flaig, Dorothee	OECD	France	dorothee.FLAIG@oecd.org
Folsom, Brennan	Econometrica, Inc.	United States	bfolsom41@gmail.com
Fouré, Jean	CEPII	France	jean.foure@cepii.fr
Fox, Alan	US International Trade Commission (USITC)	United States	Alan.Fox@usitc.gov
Fusacchia, Ilaria	University of Roma Tre	Italy	ilaria.fusacchia@uniroma3.it
Garbaccio, Richard	US Environmental Protection Agency (EPA)	United States	garbaccio.richard@epa.gov
Gehlhar, Mark	Dept of the Interior, Ofc of Surface Mining Reclamation & Enforcement	United States	mgehlhar@osmre.gov
Gesualdo, Maria	IPTS-JRC, European Commission	Spain	Maria.GESUALDO@ec.europa.eu
Ghoufrane, Azzedine	Mohammed V University in Rabat	Morocco	a.ghoufrane@um5s.net.ma
Giesecke, James	Centre of Policy Studies	Australia	james.giesecke@vu.edu.au
Gillingham, Kenneth	Yale University	United States	kenneth.gillingham@yale.edu
Go, Delfin S	The World Bank	United States	delfins.go@gmail.com
Goldberg, Pinelopi (Penny) Koujianou	Yale University, Department of Economics	United States	penny.goldberg@yale.edu
Golub, Alla	Center for Global Trade Analysis, Purdue University	United States	golub@purdue.edu
Gomes, Alexandre	Federal University of São Carlos	Brazil	alelogomes@gmail.com
Gorman, Ryan	Hohenheim University	Germany	ryangorman1@gmail.com
Gouel, Christophe	INRA	France	christophe.gouel@grignon.inra.fr
Gurgel, Angelo	Fundacao Getulio Vargas - FGV	Brazil	angelo_gurgel@yahoo.com.br
Hadj Salem, Haykel	lille university	France	haykel.hadj-salem@univ-lille1.fr
Han, Sang-Hee	KPMG	Australia	sangheehan1@kpmg.com
Haqiqi, Iman	Center for Global Trade Analysis, Purdue University	United States	ihaqiqi@purdue.edu
Harback, Katherine	The MITRE corporation	United States	kharback@mitre.org
He, Jianwu	Development Reseach Center of State Council, P.R.China	China	jianwu@drc.gov.cn
Hertel, Thomas	Center for Global Trade Analysis, Purdue University	United States	hertel@purdue.edu
Higashi, Akiko	Mitsubishi Research Institute, Inc.	Japan	akiko@mri.co.jp
Hillberry, Russell	The World Bank, Development Research Group	United States	rhillberry@worldbank.org
Hodges, Cedric	Deloitte Access Economics	Australia	cehodges@deloitte.com.au

## Participant List

<b>Name</b>	<b>Organization</b>	<b>Country</b>	<b>Email</b>
Honkatukia, Juha	VTT Technical Research Centre of Finland	Finland	juha.honkatukia@vtt.fi
Horridge, Mark	Centre of Policy Studies, Victoria University	Australia	mark.horridge@gmail.com
Hosoe, Nobuhiro	National Graduate Institute for Policy Studies	Japan	nhosoe@grips.ac.jp
Hsu, Shih-Hsun	National Taiwan University	Taiwan (ROC)	m577@ntu.edu.tw
Ianchovichina, Elena	The World Bank	United States	eianchovichina@worldbank.org
Ishinabe, Nagisa	Purdue University	United States	nishinab@purdue.edu
Itakura, Ken	Nagoya City University	Japan	itakura@econ.nagoya-cu.ac.jp
Jacobs, Henry (Hank)	University of Toronto	Canada	henry.bjacobs@gmail.com
Jean, Sébastien	Centre d'Etudes Prospectives et d'Information Internationales	France	sebastien.jean@grignon.inra.fr
Jensen, Henning Tarp	University of Copenhagen	Denmark	htj@ifro.ku.dk
Jerie, Michael	GEMPACK	Australia	michael.jerie@vu.edu.au
Jin, Hongtao	Henan Agricultural University	China	jhtzz@163.com
Jones, Lin	U.S. International Trade Commission	United States	lin.jones@usitc.gov
Jorge, Ariel Nicolás	INAI Foundation	Argentina	nicolasjorge@gmail.com
Kabir, Kayenat	Department of Agricultural Economics, Purdue University	United States	kkabir@purdue.edu
Karingi, Stephen	United Nations Economic Commission for Africa (UNECA)	Ethiopia	Skaringi@uneca.org
Kato, Nozomi	Economic Research Center, Fujitsu Research Institute	Japan	nozomi_ok@hotmail.com
Kavallari, Aikaterini	FAO, Agricultural Development Economics Division	Italy	aikaterini.kavallari@fao.org
Kawasaki, Kenichi (Ken)	National Graduate Institute for Policy Studies (GRIPS)	Japan	k-kawasaki@grips.ac.jp
Kee, Hiau Looi	World Bank	United States	hlkee@worldbank.org
Keogh-Brown, Marcus	London School of Hygiene and Tropical Medicine	United Kingdom	marcus.keogh-brown@lshtm.ac.uk
Khachaturian, Tamar	United States International Trade Commission	United States	tamar.khachaturian@usitc.gov
Khalil, Sana	University of Massachusetts Amherst	United States	sanakhalil@umass.edu
Khorana, Sangeeta	Bournemouth University	United Kingdom	skhorana@bournemouth.ac.uk
Kiendrebeogo, Youssouf	World bank	United States	ykiendrebeogo@worldbank.org
Ko, Shwe Zin	Edith Cowan University	Australia	szko@our.ecu.edu.au
Korovin, Vladimir	University of Hohenheim	Germany	v_korovin@uni-hohenheim.de
Kotagama, Hemesiri	Sultan Qaboos University	Oman	hemkot@squ.edu.om
Kutlina-Dimitrova, Zornitsa	European Commission, Directorate-General for TRADE	Belgium	zornitsa.kutlina-dimitrova@ec.europa.eu

## Participant List

<b>Name</b>	<b>Organization</b>	<b>Country</b>	<b>Email</b>
Kuzmenko, Marina	Russian Foreign Trade Academy	Russia	mg.kuzmenko@mail.ru
Kwasi Asante, George	Mendel University	ghana	asanteb48@gmail.com
Lakatos, Csilla	The World Bank (DECPG)	United States	clakatos1@worldbank.org
Lanzi, Elisa	OECD Environment Directorate	France	elisa.lanzi@oecd.org
Laryea, Bonaparte	Mendel University	Czech Republic	bonaparteodoi@yahoo.com
Latorre, María C.	Universidad Complutense de Madrid, Dept de Economia Aplicada	Spain	cmlatorre@estad.ucm.es
Lee, Hiro	Osaka University	Japan	hlee@osipp.osaka-u.ac.jp
Lemus, Billy	Lewis-Clark State College	United States	b.lemus00@gmail.com
Lennox, James	Centre of Policy Studies	Australia	james.lennox@vu.edu.au
Levin-Koopman, Jason	LEI, Wageningen University and Research Centre	The Netherlands	jason.levin-koopman@wur.nl
Li, Jifeng	State Information Center of China	China	lijf@mx.cei.gov.cn
Li, Shantong	Development Research Center	China	shantong@drc.gov.cn
Liu, Jing	Center for Global Trade Analysis, Purdue University	United States	liu207@purdue.edu
Liu, Jing-Yu	National Institute for Environmental Studies, Japan	Japan	ljyhm88@gmail.com
Lkhanaajav, Esmedekh	Centre of Policy Studies, Victoria University	Australia	esmedekh@gmail.com
Lofgren, Hans	The World Bank	United States	hlofgren@worldbank.org
Long, Xueting	University of Colorado Boulders	United States	longxueting1@gmail.com
Luckmann, Jonas	Humboldt University	Germany	luckmann@uni-hohenheim.de
Lugovoy, Oleg	Environmental Defense Fund	United States	olugovoy@hotmail.com
Madden, John	Centre for Policy Studies, Victoria University	Australia	john.madden@vu.edu.au
Maliszewska, Maryla	The World Bank	United States	mmaliszewska@worldbank.org
Marrero-Sanchez, Angelica	US Department of Agriculture/Food Safety and Inspection Service	United States	angelica.marrero@fsis.usda.gov
Marten, Alex	U.S. Environmental Protection Agency	United States	marten.alex@epa.gov
Martha, Jr., Geraldo	Embrapa Labex-USA	United States	geraldomartha@embrapa.br
Martin, Shane	MITRE Corp.	United States	slmartin@mitre.org
Martin, Will	International Food Policy Research Institute (IFPRI)	United States	w.martin@cgiar.org
Maurer, Andreas	WTO	Switzerland	andreas.maurer@wto.org
Mbaye, Ahmadou Aly	University Cheikh Anta Diop WTO Program	Senegal	aly_mbaye@hotmail.com
McDonald, Brad	IMF	United States	bmcDonald@imf.org

## Participant List

<b>Name</b>	<b>Organization</b>	<b>Country</b>	<b>Email</b>
McDonald, Scott	University of Hohenheim	Germany	jrs.mcdonald@gmail.com
McDougall, Robert	Center for Global Trade Analysis, Purdue University	United States	rmcdougall@purdue.edu
McFarland, James (Jim)	U.S, EPA	United States	mcfarland.james@epa.gov
Mecklenbrauck, Verena	Purdue University	United States	vmeckle@purdue.edu
Meeraus, Alex	GAMS Development Corporation	United States	ameeraus@gams.com
Mensah, Stephen	Mendel University	Czech Republic	pasties2009@yahoo.com
Mevel, Simon	United Nations Economic Commission for Africa	Ethiopia	smevel@uneca.org
Milot, Catherine	DFAIT	Canada	catherine.milot@international.gc.ca
Mimouni, Mondher	International Trade Centre	Switzerland	mimouni@intracen.org
Mirza, Tasneem	United Nations Development Programme	United States	tasneem.mirza@undp.org
Mohammed, Zuhal	Agricultural and Food Policy (420a)	Germany	z.mohammed@uni-hohenheim.de
Mondal, Rima	Indian Institute of Management Indore	India	f12rimam@iimdr.ac.in
Monjon, Stéphanie	University Paris Dauphine LEDa-CGEMP, CEPII and CIREDD	France	stephanie.monjon@dauphine.fr
Moore, Frances (Fran)	University of California Berkeley	United States	fmoore@post.harvard.edu
Morales Opazo, Cristian	FAO	Italy	cristian.moralesopazo@fao.org
Mosa, Abdulaziz	Hohenheim University	Germany	Abdulaziz.Mosa@uni-hohenheim.de
Muradov, Kirill	National Research University Higher School of Economics	Russia	kmuradov@mail.ru
Mureverwi, Brian	Africa Region	Zimbabwe	brianmureverwi@gmail.com
Musengele, Benedict	COMESA Secretariat	Zambia	bmusengele@comesa.int
Narayanan, Badri	Center for Global Trade Analysis, Purdue University	United States	badri@purdue.edu
Nassios, Jason	Centre of Policy Studies	Australia	jason.nassios@vu.edu.au
Nelgen, Signe	Food and Agricultural Organization (FAO)	Italy	signe.nelgen@gmail.com
Nelissen, Franz	GAMS Development Corporation	Germany	fnelissen@gams.com
Nilsson, Björn	Université Paris-Dauphine	France	nilsson@dial.prd.fr
Njika, Morris Chinenye	Anglia Ruskin University, Cambridge	United Kingdom	morris_cnjika@hotmail.com
Obst, Carl	Inst for the Development of Environmental-Economic Accounting	Australia	carl.obst@ideeagroup.com
Ochuodho, Thomas	Auburn University	United States	ochuodho@auburn.edu
Olekseyuk, Zoryana	The World Bank	United States	zolekseyuk@worldbank.org
O'Neill, Brian	National Center for Atmospheric Research	United States	boneill@ucar.edu



## Participant List

<b>Name</b>	<b>Organization</b>	<b>Country</b>	<b>Email</b>
Ong, Ghim Ping	National University of Singapore	Singapore	ceeongr@nus.edu.sg
Ortiz Valverde, Gabriela	Universidad Complutense de Madrid	Spain	gabriela.ortiz.valverde@una.cr
Osei, Francis	UNIVERSITY OF GHANA	Ghana	fosei29@gmail.com
Osorio, Israel	The World Bank	United States	iosoriorodarte@worldbank.org
Otchia, Christian	Nagoya University	Japan	bensamen@yahoo.fr
Oulmane, Nassim	UNECA, North Africa Office	Morocco	oulmane@un.org
Oyamada, Kazuhiko	Inst of Developing Economies, Japan External Trade Organization	Japan	kazuhiko_oyamada@ide.go.jp
Palatnik, Ruslana Rachel	ACADEMIC COLLEGE OF EMEK YEZREEL	Israel	rachelpa@yvc.ac.il
Pant, Hom	Arndt-Corden Department of Economics	Australia	hom.pant@anu.edu.au
Parrado, Ramiro	FEEM and Centro Euro-Mediterraneo sui Cambiamenti Climatici	Italy	ramiro.parrado@feem.it
Pasli, Devlet (Selim)	Prime Ministry Undersecretariat For Foreign Trade	Turkey	paslis@dtm.gov.tr
Pelikan, Janine	Thünen Institute of Market Analysis	Germany	janine.pelikan@ti.bund.de
Peng, Xiujian	Centre of Policy Studies, Victoria University	Australia	xiujian.peng@vu.edu.au
Peters, Jeffrey C.	Purdue University	United States	jffptrs@gmail.com
Peterson, Everett	Virginia Tech	United States	petrsone@vt.edu
Pham, Hanh Thi My	University of Greenwich	United Kingdom	pt23@gre.ac.uk
Pineiro, Valeria	International Food Policy Research Institute (IFPRI)	United States	v.pineiro@cgiar.org
Potashnikov, Vladimir	RANEPA	Russia	potashnikov.vu@gmail.com
Powers, William	U.S. International Trade Commission	United States	william.powers@usitc.gov
Pradhan, Shreekar	The University of Tennessee	United States	spradhan@vols.utk.edu
Rakotoarisoa, Manitra A. (Manou)	FAO	Italy	manitra.rakotoarisoa@fao.org
Rausch, Sebastian	ETH Zurich	Switzerland	srausch@ethz.ch
Ray, Anna	Sciences Po Paris, PSE, U. Paris 1	France	anna.ray01@gmail.com
Readhead, William	University of North Carolina at Charlotte	United States	wreadhea@unc.edu
Revesz, Tamas	Corvinus University of Budapest	Hungary	tamas.revesz@uni-corvinus.hu
Rimmer, Maureen	Centre of Policy Studies	Australia	maureen.bleazby@vu.edu.au
Rivera, Sandra A.	US International Trade Commission (USITC)	United States	sandra.rivera@usitc.gov
Robinson, Sherman	International Food Policy Research Institute (IFPRI)	United States	S.Robinson@cgiar.org
Rojas-Romagosa, Hugo	Netherlands Bureau for Economic Policy Analysis (CPB)	The Netherlands	romagosa17@gmail.com

## Participant List

<b>Name</b>	<b>Organization</b>	<b>Country</b>	<b>Email</b>
Roson, Roberto	Ca' Foscari University	Italy	roson@unive.it
Rothe, Andrea	Thunen Institute of Market Analysis	Germany	andrea.rothe@thuenen.de
Rutherford, Thomas	University of Wisconsin Madison	United States	rutherford@aae.wisc.edu
Sadni Jallab, Mustapha	WTO Geneva	Switzerland	mustapha.sadnijallab@wto.org
Sahin, Sebnem	The World Bank	United States	ssahin@worldbank.org
Salamon, Petra	Thuenen Institute	Germany	Petra.salamon@thuenen.de
Salvatici, Luca	Università Roma Tre	Italy	luca.salvatici@uniroma3.it
Sartori, Martina	School of International Studies, University of Trento	Italy	martina.sartori@lett.unitn.it
Saveyn, Bert	European Commission - DG JRC (IPTS)	Spain	bert.saveyn@ec.europa.eu
Schiffmann, Florian	Victoria University	Australia	florian.schiffmann@vu.edu.au
Schuerenberg-Frosch, Hannah	University Duisburg-Essen	Germany	hannah.schuerenberg-frosch@uni-due.de
Serome, Sendie	UNIVERSITE NOTRE DAME D"HAITI	Haiti	rsoki2321@yahoo.fr
Shutes, Lindsay	LEI	The Netherlands	lindsay.shutes@wur.nl
Siddig, Khalid	Humboldt University of Berlin	Germany	khalidhasiddig@yahoo.com
Signoret, Jose	U.S. International Trade Commission	United States	jose.signoret@usitc.gov
Singson Dinglasan, Rosalie	The World Bank	United States	rsingson@worldbank.org
Siritorn, Komwit	Songkhla Rajabhat University	Thailand	komwit.siritorn@gmail.com
Sokolova, Maria V.	Georgetown University, Grad Inst of Int'l and Development Studies	United States	maria.sokolova@graduateinstitute.ch
Songfeng, Cai	State Information Center	China	caisongfeng@126.com
Sonmez, Yontem	Manchester Metropolitan University	United Kingdom	y.sonmez@mmu.ac.uk
Soroka, Natalie	International Trade Administration	United States	natalie.soroka@trade.gov
Springmann, Marco	University of Oxford	United Kingdom	marco.springmann@dph.ox.ac.uk
Strutt, Anna	University of Waikato	New Zealand	astrutt@waikato.ac.nz
Sy, Hamat	Department of Forecasting and Economic Studies	Senegal	hamatsy1@yahoo.fr
Tafti, Alissa	USITC	United States	alissa.tafti@usitc.gov
Taheripour, Farzad	Purdue University	United States	tfarzad@purdue.edu
Tamminen, Saara	VATT Institute of Economic Research, Finland	Finland	saara.tamminen@vatt.fi
Tang, Weiqi	Center for Energy Economics and Strategy Study	China	tangwq@fudan.edu.cn
Tarr, David	The World Bank	United States	dgtarr@gmail.com

## Participant List

<b>Name</b>	<b>Organization</b>	<b>Country</b>	<b>Email</b>
Thierfelder, Karen	USNA-ECONOMICS DEPT	United States	thier@usna.edu
Thomas, Jenny	U.S. Environmental Protection Agency	United States	thomas.jenny@epa.gov
Toman, Michael	The World Bank	United States	mtoman@worldbank.org
Tourdyeva, Natalia	CEFIR	Russia	ntourdyeva@cefir.ru
Traore, Abel	University Ouaga II	Burkina Faso	traorejeanabel@yahoo.fr
Tsigas, Marinos	US International Trade Commission (USITC)	United States	marinos.tsigas@usitc.gov
Tuladhar, Sugandha	NERA	United States	sugandha.tuladhar@nera.com
Urban, Kirsten	University of Hohenheim	Germany	kirsten.urban@uni-hohenheim.de
Valdes, Constanza	USDA Economic Research Service (ERS)	United States	cvaldes@ers.usda.gov
van der Mensbrugge, Dominique	Center for Global Trade Analysis, Purdue University	United States	vandermd@purdue.edu
van Meijl, Hans	Agricultural Economics Research Institute (LEI)	The Netherlands	hans.vanmeijl@wur.nl
van Tongeren, Frank	Organisation for Economic Co-operation and Development	France	frank.vantongeren@oecd.org
Van Vuuren, Detlef	PBL Netherlands Environmental Assessment Agency	The Netherlands	detlef.vanvuuren@pbl.nl
Vargas, Renato	IADB Consultant	Guatemala	renovargas@gmail.com
Velazquez, Beatriz	European Commission (EC)	Belgium	beatriz.velazquez@ec.europa.eu
Verikios, George	KPMG	Australia	gverikios@kpmg.com.au
Villafuerte, James	Asian Development Bank	Australia	jamesvillafuerte@adb.org
Walmsley, Terrie	ImpactECON	United States	twalmsley@ImpactECON.com
Wang, Can (Tsan)	University of New England, Australia	Australia	cwang30@une.edu.au
Wang, Jiayu	The University of Queensland	Australia	479802769@qq.com
Wang, Zhi	University of International Business and Economics	China	wangzhi@UIBE.edu.cn
Waschik, Robert	Centre of Policy Studies	Australia	robert.waschik@vu.edu.au
Weber, Michael	World Bank	United States	mweber1@worldbank.org
Weitzel, Matthias	NCAR	United States	weitzel@ucar.edu
Weng, Yuyan	Tsinghua University	China	wenggy12@mails.tsinghua.edu.cn
Weyant, John	Stanford University	United States	weyant@stanford.edu
Winchester, Niven	Massachusetts Institute of Technology	United States	niven@mit.edu
Wittwer, Glyn	Centre of Policy Studies	Australia	glyn.wittwer@vu.edu.au
Wolverton, Ann	EPA, NCEE	United States	wolverton.ann@epa.gov

## Participant List

<b>Name</b>	<b>Organization</b>	<b>Country</b>	<b>Email</b>
Wright, Kedric	University of North Carolina at Charlotte	United States	kwright66@uncc.edu
Wu, Libo	Fudan University	China	ercfd@163.com
Xiao, Jingliang (Charles)	Infinite-Sum Modeling Inc. / Ciuriak Consulting Inc.	China	charles.jl.xiao@gmail.com
Xu, Susan	Department of Commerce International Trade Administration	United States	susan.xu@trade.gov
Xu, Yingying	International Trade Administration	United States	yyxuprivate@gmail.com
Yakut, Aykut Mert	Middle East Technical University	Turkey	mertyakut@gmail.com
Yang, Anton	United States International Trade Commission	United States	Anton.Yang@usitc.gov
Yao, Guolin	Purdue University	United States	gyao@purdue.edu
Yao, Shunli	Institute for Applied International Trade	China	shunliyao@yahoo.com
Yonezawa, Hidemichi	ETH Zurich	Switzerland	hyonezaw@ethz.ch
Yoshioka, Shinji	Economic and Social Research Institute, Cabinet Office	Japan	shinji.yoshioka@cao.go.jp
Yu, Wusheng	Dept of Food and Resource Economics, University of Copenhagen	Denmark	wusheng@ifro.ku.dk
Yuan, Wen	U.S. International Trade Commission	United States	wen.yuan@usitc.gov
Zaki, Chahir	Cairo University and ERF	Egypt	chahir_zaki@yahoo.com
Zanetti De Lima, Cicero	Massachusetts Institute of Technology	United States	czlima@gmail.com
Zhang, Xiao-Guang	Productivity Commission	Australia	xzhang@pc.gov.au
Zhang, Yaxiong	State Information Center	China	zhangyx@mx.cei.gov.cn
Zhou, Qian	National Institute of Environmental Studies	Japan	goodcomeon@gmail.com

## Presenter and Session Chair Index

Presenters and session chairs should locate their name in the list below to determine the page(s) and sessions in which they are scheduled.

### A

A, Lakshmi.....	20
Adams, Philip.....	17, 23
Agbahey, Johanesh.....	17
Aguiar, Angel.....	19, 27, 36, 44
Ahmed, S. Amer.....	41
Akgul, Zeynep.....	18, 46
Akinyemi, Opeyemi.....	28
Antimiani, Alessandro.....	23, 42
Aragie, Emerta Asaminew.....	36
Arguello, Ricardo.....	27
Avenyo, Elvis.....	44

### B

Bachmann, Christian.....	45
Baghdadi, Leila.....	30
Baldos, Uris Lantz.....	29, 41
Balié, Jean.....	46
Balistreri, Edward J.....	21
Banerjee, Onil.....	23
Baniya, Suprabha.....	35
Banse, Martin.....	18
Barbe, Andre.....	30
Bartelings, Heleen.....	47
Batistich, Mary Kate.....	24
Beckman, Jayson.....	22
Bekkers, Eddy.....	37
Bellora, Cecilia.....	24
Birur, Dileep.....	18, 27
Bistafa, Rafael.....	22
Boughanmi, Houcine.....	30
Boysen, Ole.....	37
Bradford, Scott.....	16
Brockmeier, Martina.....	21
Burfisher, Mary.....	18

### C

Calvin, Katherine.....	17
Carrico, Caitlyn.....	36
Cernat, Lucian.....	15, 19
Chateau, Jean.....	24
Chen, Shenjie.....	31
Chen, Yi-Chieh.....	38
Christensen, Peter.....	26
Cinquetti, Carlos.....	28
Corong, Erwin.....	26, 44

Coulibaly, Adama Ekberg.....	20
Countryman, Amanda M. (Leister).....	34, 46
Covarrubias, Enrique.....	33
Creason, Jared.....	18, 41
Creteigny, Laurent.....	19, 27
Cruz, Marcio.....	37, 41

### D

Das, Gordhan.....	28
Das, Joy.....	26
David, Anda.....	44
Delpiazzo, Elisa.....	23
Devarajan, Shantayanan.....	15
Dinh, Huong.....	27
Dixon, Peter.....	46
Donaldson, Dave.....	15
Dos Santos Fachinelli Ferrarini, Angel.....	16

### E

Edmonds, James.....	43, 48
Ehui, Simeon.....	20, 46
Escobar, Andres.....	27
Estrades, Carmen.....	33, 43

### F

Ferrantino, Michael.....	47
Ferrari, Emanuele.....	32
Ferraz, Lucas.....	36
Ferreira-Filho, Joaquim Bento.....	31
Fetzer, James.....	28
Feuerbacher, Arndt.....	21
Flaig, Dorothee.....	27
Folsom, Brennan.....	18
Fouré, Jean.....	15
Fox, Alan.....	30, 45
Fusacchia, Ilaria.....	33

### G

Garbaccio, Richard.....	24, 33, 48
Gesualdo, Maria.....	47
Ghoufrane, Azzedine.....	30
Giesecke, James.....	42
Gillingham, Kenneth.....	26
Go, Delfin S.....	19, 37
Goldberg, Pinelopi (Penny) Koujianou.....	15
Golub, Alla.....	27, 28

Gomes, Alexandre .....	43
Gouel, Christophe.....	37, 47
Gurgel, Angelo .....	47

## H

Hadj Salem, Haykel.....	47
Haqiqi, Iman .....	35
Harback, Katherine .....	35
He, Jianwu.....	30
Hertel, Thomas.....	15, 26
Higashi, Akiko.....	20
Hillberry, Russell.....	45
Hodges, Cedric.....	19
Honkatukia, Juha .....	42
Hsu, Shih-Hsun.....	26

## I

Ianchovichina, Elena.....	34
Itakura, Ken .....	32, 46

## J

Jacobs, Henry .....	18
Jean, Sébastien.....	15, 45
Jensen, Henning Tarp .....	17
Jones, Lin.....	36

## K

Kawasaki, Kenichi.....	31
Kee, Hiau Looi.....	31
Keogh-Brown, Marcus .....	17
Khorana, Sangeeta .....	17
Kiendrebeogo, Youssouf .....	32
Ko, Shwe Zin .....	22
Korovin, Vladimir.....	21
Kutlina-Dimitrova, Zornitsa .....	15

## L

Lakatos, Csilla .....	34, 36
Lanzi, Elisa .....	23
Latorre, María C. ....	22, 26
Lee, Hiro .....	38
Lennox, James.....	31
Levin-Koopman, Jason .....	45
Li, Jifeng.....	16
Li, Shantong .....	38
Liu, Jing.....	16, 43
Liu, Jing-Yu.....	31
Lofgren, Hans .....	29
Luckmann, Jonas .....	43

Lugovoy, Oleg .....	28
---------------------	----

## M

Madden, John.....	17
Maliszewska, Maryla .....	15, 27, 41
Marten, Alex .....	33
Martin, Shane.....	35
Martin, Will.....	21, 29
Maurer, Andreas.....	19
Mbaye, Ahmadou Aly .....	30
McDonald, Brad .....	37
McDonald, Scott.....	37
McDougall, Robert.....	19
Mevel, Simon.....	34, 36
Mimouni, Mondher.....	31
Mirza, Tasneem.....	41
Mohammed, Zuhail .....	44
Mondal, Rima .....	16
Monjon, Stéphanie .....	42
Moore, Frances.....	41
Morales Opazo, Cristian .....	29
Mosa, Abdulaziz.....	33
Muradov, Kirill .....	33
Mureverwi, Brian .....	36

## N

Narayanan, Badri .....	20
Nassios, Jason .....	32
Nilsson, Björn .....	29

## O

Obst, Carl .....	23
Ochudho, Thomas .....	19
Olekseyuk, Zoryana.....	21
O'Neill, Brian .....	17
Ong, Ghim Ping.....	35
Osorio Rodarte, Israel.....	19, 28
Otchia, Christian .....	19
Oulmane, Nassim .....	30
Oyamada, Kazuhiko .....	47

## P

Palatnik, Ruslana Rachel.....	16
Pant, Hom .....	19, 34
Parrado, Ramiro .....	27
Pelikan, Janine.....	29, 33
Peng, Xiujian.....	16, 20
Peters, Jeffrey C.....	28
Peterson, Everett.....	35, 41

Pham, Hanh Thi My .....	22
Pradhan, Shreekar .....	30

## R

Rakotoarisoa, Manitra A. ....	44
Rausch, Sebastian.....	42
Ray, Anna .....	47
Revesz, Tamas .....	32
Rimmer, Maureen .....	42
Robinson, Sherman .....	35, 43
Rojas-Romagosa, Hugo.....	43
Roson, Roberto.....	16, 46
Rothe, Andrea .....	42
Rutherford, Thomas.....	24

## S

Sadni Jallab, Mustapha.....	30
Sahin, Sebnem .....	35
Salamon, Petra.....	16
Sartori, Martina.....	23
Saveyn, Bert.....	27, 32
Schuerenberg-Frosch, Hannah.....	43
Shutes, Lindsay .....	37
Siddig, Khalid .....	17, 36
Signoret, Jose.....	31
Siritorn, Komwit.....	30
Sokolova, Maria V.....	37
Songfeng, Cai .....	16
Sonmez, Yontem .....	28, 33
Springmann, Marco .....	41
Strutt, Anna.....	29
Sy, Hamat .....	20

## T

Taheripour, Farzad.....	22, 45
Tamminen, Saara .....	22
Tang, Weiqi .....	16
Tarr, David .....	21
Thierfelder, Karen .....	29
Thomas, Jenny .....	18
Toman, Michael.....	48
Tourdyeva, Natalia .....	21
Traore, Abel.....	44

Tsigas, Marinos .....	26
Tuladhar, Sugandha .....	42

## U

Urban, Kirsten .....	21, 43
----------------------	--------

## V

Valdes, Constanza .....	34
van der Mensbrugghe, Dominique.....	17, 26, 35, 48
van Meijl, Hans .....	22
Van Vuuren, Detlef .....	17
Velazquez, Beatriz .....	26
Verikios, George .....	42
Villafuerte, James .....	38

## W

Walmsley, Terrie.....	15, 19, 44
Wang, Can (Tsan).....	26
Wang, Jiayu .....	31
Wang, Zhi.....	36
Waschik, Robert .....	34
Weber, Michael .....	29
Weitzel, Matthias .....	32
Weyant, John.....	17
Winchester, Niven .....	31, 35
Wittwer, Glyn.....	23, 45
Wolverton, Ann.....	33

## Y

Yakut, Aykut Mert.....	18
Yang, Anton .....	18
Yonezawa, Hidemichi.....	42
Yu, Wusheng.....	38
Yuan, Wen .....	22

## Z

Zaki, Chahir.....	34
Zanetti De Lima, Cicero .....	27
Zhang, Xiao-Guang.....	19
Zhang, Yaxiong .....	16
Zhou, Qian .....	45

## 2017 Conference Preview

### 20<sup>th</sup> Annual Conference on Global Economic Analysis *“Global Economic Analysis in the 21<sup>st</sup> Century: Challenges and Opportunities”*



**Purdue University**  
West Lafayette, IN USA | June 7-9, 2017

#### **Objective**

The objective of the annual conference on economic analysis is to promote the exchange of ideas among economists conducting quantitative analysis of global economic issues. Particular emphasis will be placed on applied general equilibrium methods, data, and application. Related theoretical and applied work is also welcome. This conference will focus around:

- Sustainable Development
- Climate change policies and adaptation
- Whither regionalism in the absence of a global trade agreement?
- Agricultural innovation, growth and transformation
- Capital and inequality in the 21<sup>st</sup> century

#### **Abstract / Session Proposal Submission**

Abstracts and organized session proposals will be accepted on the GTAP website from early November 2016 through January 15, 2017. All submissions will go through a peer review process. Accepted presenters will be notified in early March 2017 with papers due April 15, 2017.

Please address questions on this conference to:

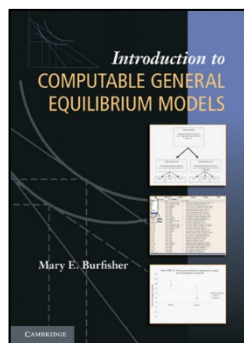
**Ginger Batta** ([gbatta@purdue.edu](mailto:gbatta@purdue.edu))  
Senior Program Manager  
Center for Global Trade Analysis  
Department of Agricultural Economics, Purdue University



# New Online Mini-Course: GTAP Preferential Trade Agreements

## 2016 GTAP Preferential Trade Agreements (PTA) Mini-Course

*“Applied Policy Analysis: Mini-course on Preferential Trade Agreements”*



*Coursework based on:*  
Introduction to Computable  
General Equilibrium Models  
by Mary E. Burfisher

### General Information

Date:	October 24 - November 20, 2016
Location:	This course is delivered fully online.
Offered by:	Center for Global Trade Analysis, Purdue University
Cost:	\$850 – Professionals residing in a developed country \$500 – All students, professionals residing in a developing country \$100 – Limited scholarships available for professionals and students currently residing in a developing country

### Apply by July 31!

[www.gtap.agecon.purdue.edu/events/GTAPPTA/2016/](http://www.gtap.agecon.purdue.edu/events/GTAPPTA/2016/)

## Objective

GTAP PTA is a three-week, fully-online mini-course that is designed to provide professionals and students with hands-on, applied training in the analysis of preferential trade agreements (PTAs) using the GTAP computable general equilibrium model. The objectives of the GTAP PTA course are to provide students with an underpinning in the economic theory of tariffs and customs unions and regulatory policy analysis, and to help them develop their applied skills in database development, design of PTA experiments and analysis of model results. The curriculum emphasizes an intuitive and graphical treatment of economic theory, provides structured experiences in manipulating and running the standard GTAP model within the RunGTAP software environment, and culminates in team-based research projects. At the end of the course, participants will have developed skills in the analysis of tariff and non-tariff liberalizations in a PTA. Pre-requisites are completion of GTAP 101 or the GTAP Short Course, or a working competency in the RunGTAP modeling software.

During the online course, participants will:

- review economic theories of tariffs, customs unions and regulatory policy;
- observe how these theories are operationalized in a CGE model;
- learn about approaches to measuring the trade-distorting effects of non-tariff measures;
- define model experiments that represent liberalization of tariffs and non-tariff measures in a PTA; and
- select and interpret general equilibrium model results that are derived from a theoretical framework.

## Structure

The course is delivered fully online and all course materials are provided to participants and included in the cost of tuition. Learning takes place through active discussions among the participants and instructor, which are carried out as asynchronous, threaded conversations on a classroom bulletin board, and through virtual team work on collaborative projects.

Please address questions on this course to:

**Ginger Batta** ([gbatta@purdue.edu](mailto:gbatta@purdue.edu))  
Senior Program Manager  
Center for Global Trade Analysis  
Department of Agricultural Economics, Purdue University



## ***“Advancing Applied General Equilibrium Modeling”***

### ***Journal of Global Economic Analysis:***

- Provides an open access, peer-reviewed platform for publication and dissemination of innovations in applied general equilibrium (AGE) modeling
- Publishes developments in theory, data, statistical analysis, methods, and teaching
- Enhances the credibility of AGE modeling by requiring replication of results during the peer-review process and, when possible, publication of new model code and data on the journal’s website
- Builds on and extends the high-impact, peer-reviewed GTAP Technical Paper Series
- Edited by:
  - Thomas Hertel, Purdue University
  - Niven Winchester, MIT
- Guided by an Editorial Advisory Board comprised of distinguished scholars and practitioners in AGE modeling and related disciplines

For more information and submission details, visit:

**[www.jgea.org](http://www.jgea.org)**

ISSN: 2377-2999

### ***Journal of Global Economic Analysis, Volume 1, Issue 1***

#### **Advances in Methods and Theory**

- Modern Trade Theory for CGE Modelling: The Armington, Krugman and Melitz Models  
*Peter B. Dixon, Michael Jerie and Maureen T. Rimmer*
- GTAP-HET: Introducing Firm Heterogeneity into the GTAP Model  
*Zeynep Akgul, Nelson B. Villoria, Thomas W. Hertel*

#### **Advances in Data and Parameters**

- The Global Trade Analysis Project (GTAP) Data Base version 9: Overview  
*Angel Aguiar, Badri Narayanan and Robert McDougall*
- The GTAP-Power Database: Disaggregating the Electricity Sector in the GTAP Database  
*Jeffrey C. Peters*

#### **Advances in Software**

- Using R to Extract Data from the World Bank’s World Development Indicators  
*Dominique van der Mensbrugghe*

## Notes



**Center for Global Trade Analysis  
Purdue University**  
403 West State Street  
West Lafayette, IN 47907-2056 USA

*<http://www.gtap.agecon.purdue.edu>*



**The World Bank**  
1818 H Street, NW  
Washington DC 20433 USA

*<http://www.worldbank.org>*