



# 26<sup>th</sup> ANNUAL CONFERENCE ON GLOBAL ECONOMIC ANALYSIS

*Broadening Engagement in a Resilient and Sustainable International Trading System*



Université de Bordeaux, Pey-Berland  
Bordeaux, France  
June 14-16, 2023

## PROGRAM CONTENTS

<b>GENERAL INFORMATION</b> .....	<b>3</b>
Dates.....	3
Location.....	3
Time Zone.....	3
WiFi.....	3
Device Charging.....	3
<b>WHOVA MOBILE CONFERENCE APP</b> .....	<b>4</b>
<b>SPECIAL RECOGNITION</b> .....	<b>5</b>
Conference Organizers.....	5
Co-Chairs.....	6
Program Committee.....	6
Abstract Reviewers.....	6
Ken Pearson Travel Funding Award.....	7
Alex Meeraus / Thomas Rutherford Travel Funding Award.....	8
Wallace E. Tyner Travel Funding Award.....	9
GTAP Conference Scholars Program.....	10
<b>CONFERENCE VENUE FLOORPLAN</b> .....	<b>11</b>
<b>TUESDAY, JUNE 13</b> .....	<b>12</b>
Schedule.....	12
<b>WEDNESDAY, JUNE 14</b> .....	<b>13</b>
Distinguished Plenary Speaker.....	13
Session Overview.....	14
Presentation Schedule.....	15
<b>THURSDAY, JUNE 15</b> .....	<b>36</b>
Session Overview.....	36
Presentation Schedule.....	37
<b>FRIDAY, JUNE 16</b> .....	<b>62</b>
Distinguished Plenary Speaker.....	62
Session Overview.....	63
Presentation Schedule.....	64
<b>2024 CONFERENCE PREVIEW</b> .....	<b>84</b>
<b>SATURDAY, JUNE 17</b> .....	<b>85</b>
Post-Conference Event.....	85
<b>SESSION PARTICIPANT INDEX</b> .....	<b>86</b>
<b>PARTICIPANT LIST</b> .....	<b>89</b>

## GENERAL INFORMATION

**Dates**

June 14-16, 2023

**Location**

Université de Bordeaux, Pey-Berland  
35 Place Pey Berland  
33000 Bordeaux, France

**Time Zone**

Central European Summer Time  
(CEST, UTC+2)

**WiFi**

SSID: UBx\_invites  
Login: GEA  
Password: Tjv74\_R\*

**Device Charging**

Please come to the conference with devices fully charged. The venue is an old building and outlets for charging will be few. Overloading these could cause a short circuit.

**Objective and Format**

The goal of the annual conference on economic analysis is to promote the exchange of ideas among economists conducting quantitative analysis of global economic issues. The conference features specially organized and contributed paper breakout sessions. The organized sessions have been developed by members of the GTAP Network to highlight a specific area of research and/or policy analysis. The contributed paper breakout sessions were selected through a peer review process and subsequently grouped to reflect the varied themes being addressed by members of the GTAP Network. The content of these sessions reflects the overall conference themes.

***"Broadening Engagement in a Resilient and Sustainable International Trading System"***

- Handling sudden global disruptions (pandemic, war)
- Handling slow onset disasters (climate change and biodiversity loss)
- Innovation strategies of socio-economic factors
- Inequalities between and within countries
- Globalization dynamics and financial markets

Conference papers are available through the conference homepage: [www.gtap.org/events/conferences/2023/](http://www.gtap.org/events/conferences/2023/) ISSN 2160-2115 (online)

**Stay Connected with GTAP!**

Connect with us on social media and subscribe to the GTAP-L Mailing List to keep up-to-date on all things GTAP!



@GTAP\_Purdue



@GTAPPurdue



GTAP



GTAPPurdue



GTAP-L Mailing List

**#GTAPConference**

WHOVA MOBILE CONFERENCE APP

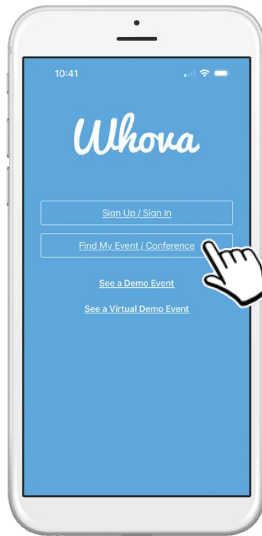


**Whoava** is the mobile app used to house the conference program, streamline communication during the conference, and facilitate attendee engagement. iOS and Android users can download the free Whoava app through their device's app store.

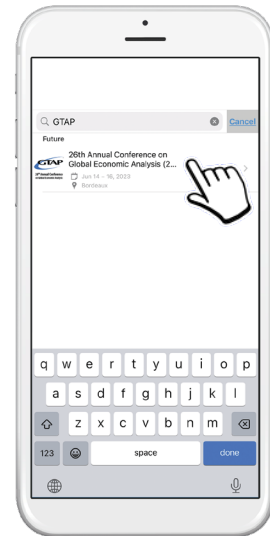
**Step 1 – Dowload Whoava App**



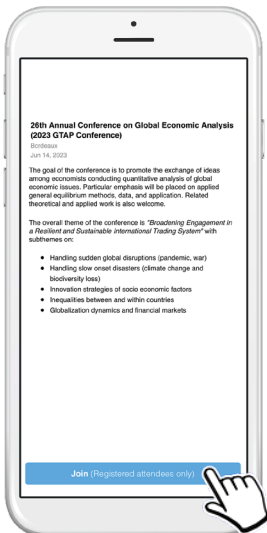
**Step 2 – Tap “Find My Event”**



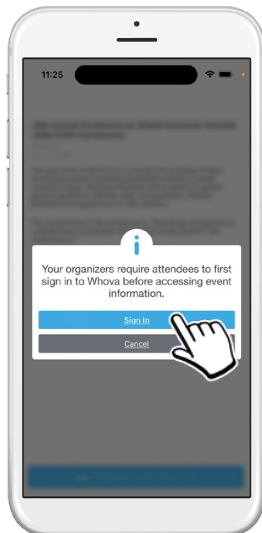
**Step 3 – Search for “GTAP”, tap result**



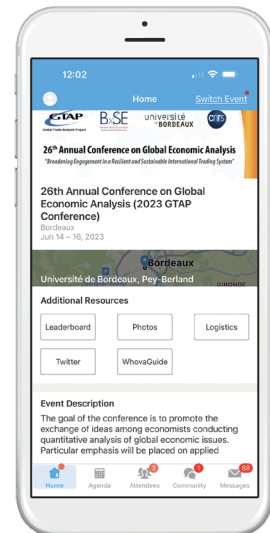
**Step 4 – Tap “Join”**



**Step 5 – Log in using the same email used on your conference registration**



**Step 6 – Enjoy the conference!**



**Invitation code:**  
GTAPConf2023 (if prompted)



**Useful Tip**

Allow notifications from Whoava to ensure you receive schedule updates and other communication during the conference.

## Conference Organizers



### Global Trade Analysis Project

The Global Trade Analysis Project (GTAP) is a global network of researchers and policy makers conducting quantitative analysis of international policy issues within an economy-wide framework. GTAP is coordinated by the Center for Global Trade Analysis, which is housed in the Department of Agricultural Economics at Purdue University. The Center for Global Trade Analysis' mission is to provide leadership in economic policy analysis through better data, fostering collaboration, and research. The centerpiece of Global Trade Analysis Project is the GTAP Data Base, a fully documented and publicly available, analytical data base for the global economy, which contains detailed country data, linked through bilateral trade, transportation and protection. Accompanying this data base is a set of GTAP-based models used and developed by network members. The GTAP Data Base and analytical framework are used by thousands of researchers around the world. Originally, the majority of the research was related to international trade policy issues. Today, GTAP is still the most widely used tool for trade policy, but its use has expanded into poverty, international migration, foreign investment, climate change, environment, energy, and biofuel policies. GTAP has become a common "language" for many of those conducting analysis of global policy issues with GTAP-based results becoming increasingly influential in decision making around the world in trade, climate change, energy and the environment.

[www.gtap.agecon.purdue.edu](http://www.gtap.agecon.purdue.edu)



Bordeaux Sciences Economiques (BSE) is a joint research unit of the University of Bordeaux and the CNRS, with the support of INRAE. Created from the merger of GREThA and LAREFI on January 1, 2022, BSE is one of the main French research centers in economics, bringing together a community of approximately 160 researchers, engineers, administrative staff and doctoral students. Through research in economics and in association with other disciplines, BSE aims to make a significant contribution to major contemporary societal issues. Whether on the themes of climate change and biodiversity, innovation strategies of socio-economic actors, issues of inequalities between and within countries, or on globalization dynamics and financial markets, the members of BSE are committed to a scientific production that combines academic excellence, partnerships with socio-economic actors and dissemination to the general public.

<http://www.bse.u-bordeaux.fr/>



The University of Bordeaux is ranked among the top French universities for the quality of its education and research. A multidisciplinary, research-focused, international institution, it leads an ambitious development program with its partners to further promote Bordeaux as a "Campus of Excellence". The College of Law, Political Science, Economics and Management promotes a policy of innovative, ambitious education that strongly interacts with the socio-economic environment. The college offers over 150 courses to its students, who are based in five Campus sites in Aquitaine (Pessac, Bordeaux Bastide, Bordeaux Pey-Berland, Agen and Périgueux). Students receive high-level teaching with a research-based approach. The college has established itself as a major actor within the region via local partnerships, and has also developed a strong international outlook.

<https://www.u-bordeaux.fr/>



The French National Centre for Scientific Research is among the world's leading research institutions. Its scientists explore the living world, matter, the Universe, and the functioning of human societies in order to meet the major challenges of today and tomorrow. Internationally recognised for the excellence of its scientific research, the CNRS is a reference in the world of research and development, as well as for the general public.

<https://www.cnrs.fr/en/cnrs>

## SPECIAL RECOGNITION

## Co-Chairs

- **Dominique van der Mensbrughe**, Center for Global Trade Analysis, Purdue University
- **Antoine Bouët**, Centre d'Etudes Prospectives et d'Information Internationales

## Program Committee

- Eddy Bekkers
- Cecilia Bellora
- Tanguy Bernard
- Lurong Chen
- Marijke Kuiper
- H el ene Maisonnave
- Amanda Countryman
- Maryla Maliszewska
- Luca Salvatici
- Hugo Valin

## Abstract Reviewers

- |                              |                          |                            |                         |
|------------------------------|--------------------------|----------------------------|-------------------------|
| Zewdu Abro                   | Florian Freund           | Damara Lopes Afonso        | Rohan Sachdev           |
| Wafa Aidi                    | Ilaria Fusacchia         | Yingying Lu                | Mustapha Sadni Jallab   |
| Zeynep Akgul                 | Ragchaasuren Galindev    | Jonas Luckmann             | Amadou Sagnon           |
| Abdallah Akintola            | Rafael Garaffa           | Trang Luong                | Leysa Maty Sall         |
| Abdulaziz Alhamed            | Clara Garcia Bouyssou    | Mohammad M. Khabbazan      | Martina Sartori         |
| Alessandro Antimiani         | Alessandro Gatto         | Ludovic Maguire            | Antti Simola            |
| Robin Argueyrolles           | Alla Golub               | Socrates Majune            | Zuzana Smeets Kristkova |
| Yurani Arias-Granada         | Pilar Gracia De Renteria | Asiya Maskava              | Gabriele Standardi      |
| Martin Banse                 | Paul Gretton             | Xue Meng                   | Davit Stepanyan         |
| Gabriella Beaumont-Smith     | Houssein Guimbard        | Marlon Molina              | Brooke Tenison          |
| Lauren Benavidez             | Krisna Gupta             | Abdulaziz Mosa             | Karen Thierfelder       |
| Etienne Berthet              | Angelo Gurgel            | Esmat Mostafa              | Ferike Thom             |
| Gita Bhushal Adhikary        | Meriem Hamdi-Cherif      | Brian Mureverwi            | Milan Thomas            |
| Bineswaree Bolaky            | Iman Haqiqi              | Talent Nesongano           | Marinos Tsigas          |
| Mike Bourne                  | Martin Henseler          | Ana Norman-Lopez           | Willem-Jan Van Zeist    |
| Ole Boysen                   | Cedric Hodges            | Mary Odongo                | Monika Verma            |
| Liangyue Cao                 | Nobuhiro Hosoe           | Christopher Hugh Onyango   | Achim Vogt              |
| Rajesh Chadha                | Privilage Hove           | Christian Otchia           | Lee Wai Choi            |
| Y.-H. Henry Chen             | Xiurong Hu               | Chen Pan                   | Zhan Wang               |
| Margaret Chitiga             | Lee Humphreys            | Karolina Pawlak            | Joschka Wanner          |
| Francesco Clora              | James Hurungo            | Janine Pelikan             | Matthias Weitzel        |
| Edgar Cooke                  | Ken Itakura              | Sigit Perdana              | Rupananda Widanage      |
| Souleymane Sadio Diallo      | Laerke Jensbye           | Maria Filipa Seara Pereira | Rienne Wilts            |
| Tatjana D obelung            | Omid Karami              | George Philippidis         | Rayan Wolf              |
| Ruiying Du                   | Mustajab Khatir          | Andressa Proque            | Jared Woollacott        |
| Yuventus Effendi             | Thierry Kinkpe           | David Radi                 | Sinan Caner Yamak       |
| Christian Arnault Emini      | Geoffrey M. Kitetu       | Manitra A. Rakotoarisoa    | Guolin Yao              |
| Luis Enrique Escalante Ochoa | Youssouf Kone            | Maria Priscila Ramos       | Wusheng Yu              |
| Emanuele Ferrari             | Marijke Kuiper           | Radouane Raouf             | Cicero Zanetti De Lima  |
| Joaquim Bento Ferreira-Filho | Jeffrey Kuo              | Srabashi Ray               | Adwell Zembele          |
| Arndt Feuerbacher            | Byeong-ho Lim            | Lifeng Ren                 | Xin Zhao                |
| Dorothee Flaig               | Jing Liu                 | Tamas Revesz               |                         |
| Jean Four e                  | Xianglong Locky Liu      | Hugo Rojas-Romagosa        |                         |

### Ken Pearson Travel Funding Award

In recognition of the many contributions made by the late Professor Ken Pearson to the GTAP Network, the **Centre of Policy Studies, Victoria University** has provided funding in his name aimed to support the participation of promising young researchers at the GTAP Conference and encourage their contribution to the use and further development of analytical software for CGE modelling, following in his tradition. Recipient(s) were selected based on the following criteria: 1) an early career researcher within five years of the start of their research career; 2) active in undertaking applied model-based analyses of real-world problems using GEMPACK or related software; and 3) paper accepted into the GTAP Conference.



Ken Pearson's early career was as an outstanding mathematician. In the 1970s, he became Reader and Chairman in Mathematics at La Trobe University, Australia. In his teaching role, he investigated the possibility of drawing on economics rather than physics for relevant examples. In this process, he came across the newly emerging field of applied (or computable) general equilibrium modelling. Long before the economists, Ken recognized the need for software that would not only solve large scale economic models but would also be a vehicle: for organizing data; for analyzing results; for transferring models between researchers; and for storing models in a computationally accessible form which would allow them to be accessed at other times and by other researchers. By the mid-1980s, he had responded to this need by taking up a visiting position at the Impact Research Centre (Melbourne University) and creating GEMPACK. In 1992, Ken moved to the Centre of Policy Studies (CoPS, then located at Monash

University). At CoPS, he was appointed Professorial Fellow in 1999, and held the position of Deputy Director from 2000 to 2004. He retired in 2014, with the position of Director, GEMPACK passing to Mark Horridge. Ken died of cancer on May 12, 2015. Throughout his illness, he was stoic, always cheerful, and grateful for a good life. In a summary of Ken's contribution to the GTAP, Tom Hertel wrote, *"Those of us who had the privilege of working closely with Ken count our collaborations with him as among the most stimulating and rewarding of our careers. Ken's keen intellect and his background in theoretical mathematics allowed him to quickly grasp the essence of whatever modeling challenge we posed."*

### Recipient



#### Giovanni Gianetti

PhD Student, Escola Superior de Agricultura Luiz de Queiroz, Universidade de Sao Paulo (Brazil)

#### **Socioeconomic and environmental impacts of degraded pasture recovery in Brazil: contribution to the NDC (#6850)**

Session #27, pg. 44

Giovanni Gianetti is currently a Ph.D. candidate in Applied Economics at Escola Superior de Agricultura Luiz de Queiroz, Universidade de São Paulo (Brazil), and a Researcher at the Esalq/USP Group of Public Policies (Grupo de Políticas Públicas – GPP). His work and research are mainly focused on rural, environmental, and natural resources economics, with emphasis on computable general equilibrium modeling, low-carbon agriculture, land use change, sustainable production systems, family farming, and rural credit.

**Alex Meeraus / Thomas Rutherford Travel Funding Award**

In recognition of Meeraus and Rutherford's contributions, the **GAMS Development Corporation** has provided funding in their names aimed to support the participation of promising young researchers at the GTAP Conference and encourage their contribution to the use and further development of analytical software for CGE modelling. Recipient(s) were selected based on being the following criteria: 1) an early career researcher within five years of the start of their research career; 2) active in undertaking applied model-based analyses using GAMS or related software; and 3) paper accepted into the GTAP Conference.

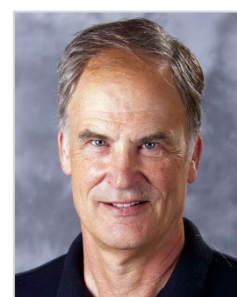


Alexander Meeraus is the founder and CEO Emeritus of the GAMS Development Corporation, a high-tech international development and consulting firm in the area of strategic and operation planning systems and software applied to problems in industry, government and academia. After finishing his studies in mechanical engineering at the Technical

University in Vienna, he came to the US, worked for General Electric in the development of engineering software for computer aided design and joined the World Bank's Development Research Center in 1972. His research focused at investment planning in the process industries, agriculture and water resources. He led the development team for the General Algebraic Modeling System (GAMS), now widely used around the world for strategic and operational planning and scheduling. In 1987, he left the Bank to fully develop the GAMS software into a commercially viable product. In 1988 he was awarded the INFORMS Computing Society Price for the development of GAMS. In the Celebrating 50 Years of Operations Research festschrift, GAMS was selected as the 1988 milestone. In 2012, GAMS shared the INFORMS Impact Price for the development of Algebraic Modeling Systems.

Thomas Rutherford received his Ph.D. in operations research from Stanford in 1987 and is currently a Professor of Agricultural and Applied Economics at the University of Wisconsin-Madison. Rutherford has had a career arc that has touched the most challenging global policy issues of our times—trade, energy markets, and climate change. He

has combined his keen interest in economic policy making while advancing the frontiers of economic modeling in spatial, industrial, mathematical and dynamic economics. Another component of Tom's portfolio is the development of algorithms and software that has led to major improvements in quantitative tools that facilitate the ability to undertake policy analysis. The best known of these tools is the Mathematical Programming System for General Equilibrium (MPSGE), a modeling environment designed to facilitate the development of GE models that is combined with the General Algebraic Modeling System (GAMS). He developed a global model in MPSGE coupled to the GTAP Data Base (known as GTAPinGAMS) that has been widely used and lowered the entry cost to global economic modeling for GAMS users.

**Recipients**

**Nyambaatar Batbayar**  
Researcher, Economic Research  
Institute (Mongolia)

**Impact of Revival Policy for Public  
Sector Productivity** (#6874)  
Session #59, pg. 79

Nyambaatar Batbayar graduated from the National University of Mongolia and obtained a Bachelor degree in International Economics. He also holds a MSc degree in Economic Analysis from the Corvinus University of Budapest. Currently, he is a researcher at the Economic Research Institute of Mongolia. His favourite research area is CGE modelling.



**Laura Schürer**  
Research Assistant and PhD Student,  
University of Oldenburg (Germany)

**How gains from emissions trading  
can turn into gains for  
climate** (#6932)  
Session #42, pg.59

Laura Schürer studied Philosophy & Economics and Sustainability Economics in Bayreuth and Oldenburg. Since November 2021 she is a PhD student and research associate at the chair of economic policy at the Carl von Ossietzky University of Oldenburg. Her research in the field of climate economics focuses on international emission trading and climate change negotiations.





Center for Global Trade Analysis  
Purdue University

## Wallace E. Tyner Travel Funding Award

In recognition of the late Professor Wallace E. Tyner, who served as Senior Policy Advisor to the Center for Global Trade Analysis for many years and was a strong proponent for establishing the center at Purdue University in the early 1990s, the Center for Global Trade Analysis has provided funding in his name to support the participation of a promising young researcher at the annual GTAP conference. Recipient(s) were selected based on the following criteria: 1) an early career researcher undertaking policy-relevant, research at the interface of the economy, energy and the environment with preference given to research that bridges disciplinary boundaries; and 2) paper accepted into the GTAP Conference.



Professor Tyner's research interests were broad, but centered mostly in the areas of climate, energy, agricultural, and natural resource policy analysis. His work in energy economics encompassed oil, natural gas, coal, oil shale, biomass, biofuels from agricultural sources, and solar and wind energy. Much of work focused on economic and policy analysis for biofuels and the interplay between biofuels policies and other energy policies. As Department Head of Purdue's Department of Agricultural Economics from 1989-2002, Wally oversaw the establishment of the Center for Global Trade Analysis and facilitated the formation of the GTAP Consortium – a key ingredient in GTAP's longevity. When he returned to the faculty in 2003, Wally initiated a cutting-edge program of research related to biofuels and their linkages to energy, agriculture and the environment. In this context, he became a heavy user of the GTAP Model and its derivatives: GTAP-AEZ and GTAP-BIO. His research in this area earned him lifetime career recognitions from his professional associations (AAEA, AAAS and IAAE), industry (US Association for Energy Economics), as well as from Purdue University (the Morrill Award for outstanding career achievements with a societal impact), among many other awards. Wally was a great role model and advocate for policy-relevant, inter-disciplinary research. He was also an excellent mentor for students and young professionals.

## Recipients



### Roshen Fernando

PhD Student, The Australian National University (Australia)

#### **Global economic consequences arising from the impacts of physical climate risks on agriculture and energy** (#6986)

Session #17, pg. 32

Roshen Fernando is an integrated assessment modeler with a multidisciplinary background in economics, engineering, finance, and management. He is interested in working on complex challenges to humanity at the intersection of natural sciences and economics. For his ongoing PhD research at the Crawford School of Public Policy, he has worked on modeling the economic consequences of infectious diseases, climate change, and antimicrobial resistance. With his expertise and experience, he has contributed to the work of ADB, IMF, NGFS, and the World Bank.



### Dominic White

PhD Student, Auckland University of Technology (New Zealand)

#### **Logs or Permits? Forestry Land Use Decisions in an Emissions Trading Scheme** (#6807)

Session #36, pg. 53

Dominic White holds an Honours degree in economics from the University of Western Australia. Currently, he is an economics PhD student at Auckland University of Technology, researching general equilibrium modelling techniques for environmental policy analysis. He is passionate about the environment and using computable general equilibrium modelling for climate change policy analysis.

## GTAP Conference Scholars Program

The goal of the GTAP Conference Scholars Program is to provide first-time student presenters the opportunity to “dry-run” their presentation in a virtual environment prior to the conference, receive feedback from the audience, and have time to reflect on and incorporate changes before their presentation during the conference.

### Scholars Program Participants



**Ines Benachir**

Graduate researcher, Tsinghua Berkeley Shenzhen Institute (France)

**Provincial Assessment of the Impacts of Coal Phase-out in China using the GTAP-E-Power model** (#6993)

Session #5, pg.20



**Selina Hauser**

PhD Candidate in Economics, World Trade Institute, University of Bern (Switzerland)

**Labor market effects of trade policies in GVC terms: Disentangle trade integration and productivity** (#6997)

Session #3, pg. 18



**Falk Krumbe**

PhD Student, University of Hohenheim (Germany)

**The economic dependency of Ghana's cocoa sector on pollination services** (#6941)

Session #4, pg. 19



**Jesús Alberto Mercado Córdova**

Ph.D Student of Technology Management, Economics and Policy Program, Seoul National University (South Korea)

**The Environmental Effects of the EU-MERCOSUR FTA in induced GHG emissions from LUCC and energy sectors** (#6955)

Session #18, pg. 33



**Yacouba Ouedraogo**

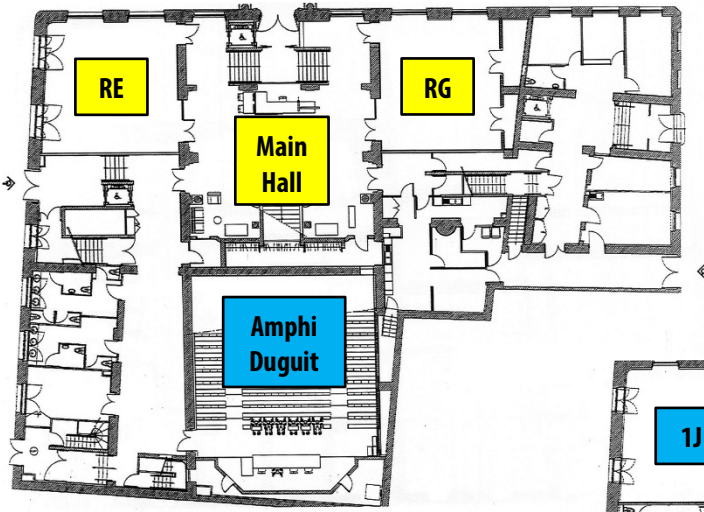
PhD Student, University of Stellenbosch (South Africa)

**The economy-wide impact of investment in energy infrastructure development in Burkina Faso** (#6984)

Session #12, pg. 27

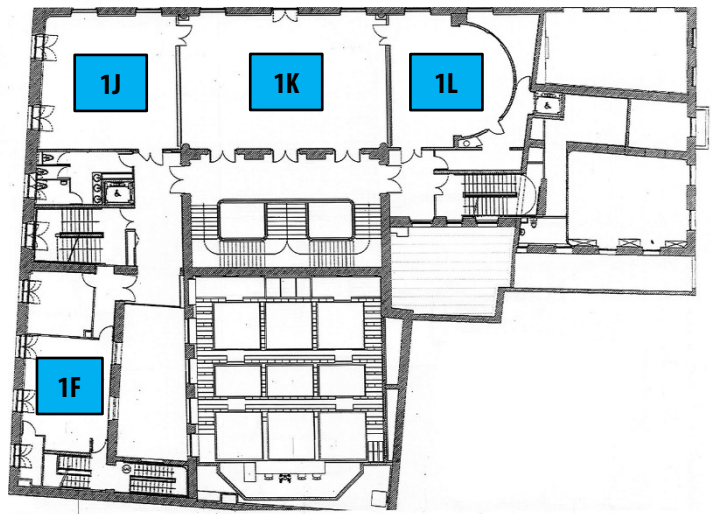
CONFERENCE VENUE FLOORPLAN

Main Floor

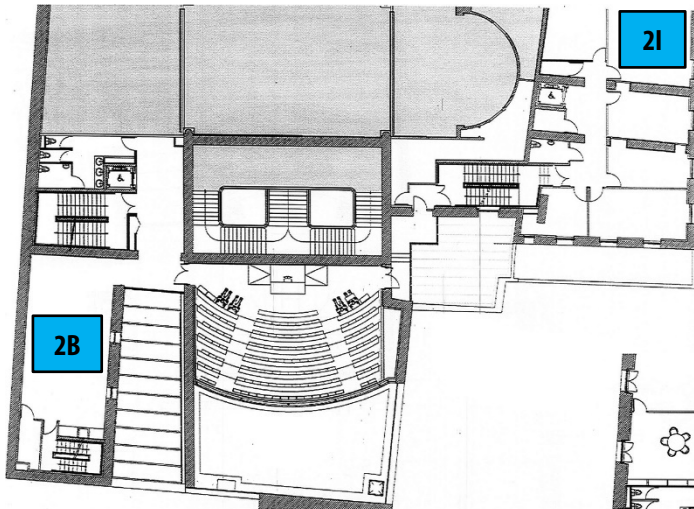


- Registration**  
Main Hall
- Catering**  
Main Hall, RE, RG
- Session Rooms**  
Amphi Duguit, 1F, 1J, 1K, 1L, 2B, 2I, 3B

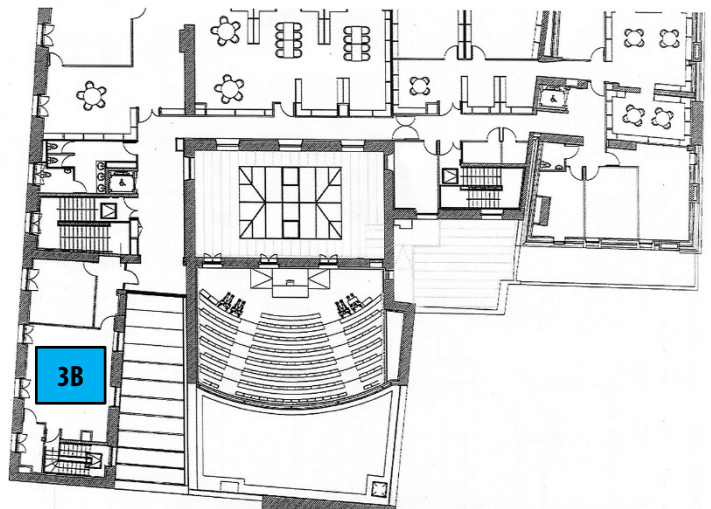
First Floor



Second Floor



Third Floor



**TUESDAY, JUNE 13**

**Schedule**

<b>Time</b> (CEST, UTC+2)	<b>Event</b>	<b>Location</b>
<b>3:00-5:00pm</b> (15:00-17:00)	<b>Early Onsite Check-in</b>	<b>Main Hall</b>

We encourage participants who will be in Bordeaux on Tuesday afternoon to attend this early check-in and collect their conference materials to avoid the lines Wednesday morning.

**Université de Bordeaux, Pey-Berland**

35 Place Pey Berland

33000 Bordeaux, France

WEDNESDAY, JUNE 14

Distinguished Plenary Speaker

***“Carbon Dioxide Removal, Planetary Waste Management and the future of Carbon Pricing: A Public Economics Perspective”***



**Ottmar Edenhofer**

Director and Chief Economist, Potsdam Institute for Climate Impact Research  
Director, Mercator Research Institute on Global Commons and Climate Change  
Professor for Climate Economics and Public Policy, Technische Universität Berlin  
<https://www.pik-potsdam.de/members/edenh/>

Ottmar Edenhofer is Professor at the Technische Universität Berlin and widely considered to be one of the world's leading experts on the economics of climate change. He is Director and Chief Economist at the Potsdam Institute for Climate Impact Research (PIK). From 2007 to 2018 he headed PIK's Research Domain 3 Sustainable Solutions, which received an excellent evaluation by the Leibniz Society in 2014. Following the strategic decision of PIK in 2007 to become more solution-oriented with interdisciplinary Research Domains, Ottmar Edenhofer formed the research agenda of this department. He was pioneering in giving the institute, which traditionally focused on large-scale quantitative computational modelling of the earth and its processes, a social science research agenda providing rigorous and meaningful information on climate change mitigation to society. In 2012 he was appointed director of the newly founded Mercator Research Institute on Global Commons and Climate Change (MCC). The work of the MCC was considered "excellent" by an external scientific evaluation board commissioned by Stiftung Mercator in 2015. It ranked first in Europe and fourth worldwide by the ICGG Climate Think Tank Ranking 2016 and second in the category energy and the environment in Europe within the "Prospect: Think Tank Awards 2016". Edenhofer is member of the German National Academy of Science and Engineering acatech as well as member of the German National Academy of Sciences Leopoldina, Section Economics and Empirical Social Sciences. In July 2018, Edenhofer was awarded the Romano Guardini Prize by the Katholische Akademie in Bayern (Catholic Academy in Bavaria). In 2020, he received the prestigious Deutsche Umweltpreis (German Environmental Award) by the Deutsche Bundesstiftung Umwelt (DBU) amongst others for his outstanding achievements in the field of carbon pricing. In November 2021, Edenhofer received the Arthur Burkhardt-Prize for the interdisciplinary orientation of his research.

**WEDNESDAY, JUNE 14****Session Overview**

Session details for this day are listed on pages 15-35. You can also access the conference schedule through the **Whova** mobile app (see page 4).

CEST (UTC+2)	Amphi Duguit	Rm 1F	Rm 1J	Rm 1K	Rm 1L	Rm 2B	Rm 3B
<b>9:00-10:30am</b>	<b>Opening Remarks and Plenary Session</b>  <i>Carbon Dioxide Removal, Planetary Waste Management and the future of Carbon Pricing</i>  Pg. 15						
<b>11:00am-12:35pm</b>	<b>*Session #1</b>  <i>Improving the Dynamic GTAP Model Framework</i>  Pg. 16	<b>Session #2</b>  <i>Trade and the Environment</i>  Pg. 17		<b>Session #3</b>  <i>Global Value Chains</i>  Pg. 18	<b>Session #4</b>  <i>Ecosystem and Biodiversity</i>  Pg. 19	<b>Session #5</b>  <i>Climate Policies</i>  Pg. 20	<b>Session #6</b>  <i>Digital Economy &amp; Education Modeling</i>  Pg. 21
<b>2:00-4:05pm</b> (14:00-16:05)	<b>*Session #7</b>  <i>Realizing Africa's industrialization &amp; diversification agenda, via the implementation of the AfCFTA</i>  Pg. 22	<b>*Session #8</b>  <i>Modelling the economic consequences of Russia's war against Ukraine</i>  Pg. 23	<b>*Session #9</b>  <i>Moving Your Classroom Online - It's a Different World</i>  Pg. 24	<b>*Session #10</b>  <i>Multi-scale Sustainability Analysis of Land &amp; Water Resources using SIMPLE-G</i>  Pg. 25	<b>Session #11</b>  <i>Model Extension and Development</i>  Pg. 26	<b>Session #12</b>  <i>Transportation and Infrastructure</i>  Pg. 27	<b>Session #13</b>  <i>Economic Crisis</i>  Pg. 28
<b>4:35-6:10pm</b> (16:35-18:10)		<b>*Session #14</b>  <i>Modeling economy, energy and environment interactions using GTAP-RD</i>  Pg. 29	<b>*Session #15</b>  <i>Addressing modelling challenges: Brexit, Biden's IRA, &amp; Gender Modelling</i>  Pg. 30	<b>Session #16</b>  <i>CGE Modeling</i>  Pg. 31	<b>Session #17</b>  <i>Risks and Consequences of Natural Disasters</i>  Pg. 32	<b>Session #18</b>  <i>Climate Impacts (Europe)</i>  Pg. 33	<b>Session #19</b>  <i>Food Security and Waste</i>  Pg. 34

CEST Central European Summer Time

\*Organized Session

WEDNESDAY, JUNE 14

## Presentation Schedule

Presenters should arrive to their assigned session room 10 minutes prior to the start of the session with their presentation on a USB drive in both PowerPoint and PDF formats. Times listed within each session are targets and may vary slightly based on how the session is running.

**Looking for a paper?**

Search by ID# at: [www.gtap.org/events/conferences/2023/](http://www.gtap.org/events/conferences/2023/)

Time (CEST, UTC+2)	Event	Location
8:00am-5:00pm (8:00-17:00)	Onsite Check-in	Main Hall
9:00-10:30am	Opening Remarks and Plenary Session	Amphi Duguit
<b><i>“Carbon Dioxide Removal, Planetary Waste Management and the future of Carbon Pricing: A Public Economics Perspective”</i></b>		
<b>Session Chair:</b>	<b>Sergey Paltsev</b> , MIT Joint Program on the Science and Policy of Global Change	
9:00-9:30am	<b>Opening Remarks</b> <ul style="list-style-type: none"> <li>– <b>Dominique van der Mensbrugghe</b>, Center for Global Trade Analysis, Purdue University</li> <li>– <b>Antoine Bouët</b>, Centre d'Etudes Prospectives et d'Information Internationales</li> </ul>	
9:30-9:35am	Session Introduction	
9:35-10:05am	<b>Carbon Dioxide Removal, Planetary Waste Management and the future of Carbon Pricing: A Public Economics Perspective</b> <ul style="list-style-type: none"> <li>– <b>Ottmar Edenhofer</b>, Potsdam Institute for Climate Impact Research</li> </ul>	
10:05-10:25am	Discussion	
10:25-10:30am	Session Closing	
10:30-11:00am	Coffee Break	Main Hall/RE/RG

WEDNESDAY, JUNE 14

## Presentation Schedule

Presenters should arrive to their assigned session room 10 minutes prior to the start of the session with their presentation on a USB drive in both PowerPoint and PDF formats. Times listed within each session are targets and may vary slightly based on how the session is running.



**Looking for a paper?**

Search by ID# at: [www.gtap.org/events/conferences/2023/](http://www.gtap.org/events/conferences/2023/)

Time (CEST, UTC+2)	Event	Location
11:00am-12:35pm	Organized Session 1	Amphi Duguit

***“Improving the Dynamic GTAP Model Framework: Incorporating Trends in Technologies and Preferences as well as Labor Market Features”***

**Organized by:** Wen Jin Yuan, US International Trade Commission  
Erwin Corong, Center for Global Trade Analysis, Purdue University

**Session Chair:** William Powers, US International Trade Commission

11:00-11:03am	Session Introduction
11:03-11:23am	<b><u>What do GTAP databases tell us about technologies for industries and regions?</u></b> (#6911) – Peter Dixon, Victoria University
11:23-11:33am	Discussion
11:33-11:53am	<b><u>Incorporating Job Search Frictions and Unemployment into the GTAP Model</u></b> (#7011) – Wen Jin Yuan, US International Trade Commission
11:53am-12:03pm	Discussion
12:03-12:23pm	<b><u>Modeling Employment Transitions in the GTAP-RD model</u></b> (#6840) – Jingliang Xiao, Office of the Chief Economist, Global Affairs Canada
12:23-12:33pm	Discussion
12:33-12:35pm	Session Closing



**WEDNESDAY, JUNE 14****Presentation Schedule**

Presenters should arrive to their assigned session room 10 minutes prior to the start of the session with their presentation on a USB drive in both PowerPoint and PDF formats. Times listed within each session are targets and may vary slightly based on how the session is running.

**Looking for a paper?**

Search by ID# at: [www.gtap.org/events/conferences/2023/](http://www.gtap.org/events/conferences/2023/)

Time (CEST, UTC+2)	Event	Location
11:00am-12:35pm	Session 2	Rm 1F

***“Trade and the Environment”***

**Session Chair:** Mike Bourne, DEFRA

11:00-11:03am	Session Introduction
11:03-11:23am	<b><u>Investigating international spillovers for CO2 emissions in the GVAR model</u></b> (#6930) – Bjornar Karlsen Kivedal, Ostfold University College
11:23-11:33am	Discussion
11:33-11:53am	<b><u>Measuring Climate Change Impacts on Agriculture: An Equilibrium Perspective on Supply-Side Approaches</u></b> (#6798) – Christophe Gouel, INRAE
11:53am-12:03pm	Discussion
12:03-12:23pm	<b><u>Trade and the Environment: could the technique effect be the missing piece in environmental assessment of trade liberalisation?</u></b> (#6940) – Lee Humphreys, Department for Business and Trade
12:23-12:33pm	Discussion
12:33-12:35pm	Session Closing

WEDNESDAY, JUNE 14

## Presentation Schedule

Presenters should arrive to their assigned session room 10 minutes prior to the start of the session with their presentation on a USB drive in both PowerPoint and PDF formats. Times listed within each session are targets and may vary slightly based on how the session is running.

**Looking for a paper?**

Search by ID# at: [www.gtap.org/events/conferences/2023/](http://www.gtap.org/events/conferences/2023/)

Time (CEST, UTC+2)	Event	Location
11:00am-12:35pm	Session 3	Rm 1K

**“Global Value Chains”**

**Session Chair:** Angel Aguiar, Center for Global Trade Analysis, Purdue University

11:00-11:03am	Session Introduction
11:03-11:23am	<p><b><u>Labor market effects of trade policies in GVC terms: Disentangle trade integration and productivity</u></b> (#6997)</p> <p>– Selina Hauser, World Trade Institute, University of Bern *GTAP Conference Scholars Program Participant</p>
11:23-11:33am	Discussion
11:33-11:53am	<p><b><u>Measuring regional Global Value Chain integration in the UK: A bottom-up approach for better regional statistics</u></b> (#6878)</p> <p>– Juergen Amann, OECD</p>
11:53am-12:03pm	Discussion
12:03-12:23pm	<p><b><u>Impact of RTAs on the regional heterogeneity in global value chains</u></b> (#6938)</p> <p>– Jiaze Sun, Tsinghua University</p>
12:23-12:33pm	Discussion
12:33-12:35pm	Session Closing

WEDNESDAY, JUNE 14

## Presentation Schedule

Presenters should arrive to their assigned session room 10 minutes prior to the start of the session with their presentation on a USB drive in both PowerPoint and PDF formats. Times listed within each session are targets and may vary slightly based on how the session is running.

**Looking for a paper?**

Search by ID# at: [www.gtap.org/events/conferences/2023/](http://www.gtap.org/events/conferences/2023/)

Time (CEST, UTC+2)	Event	Location
11:00am-12:35pm	Session 4	Rm 1L

***“Ecosystem and Biodiversity”***

**Session Chair:** Jonas Luckmann, Humboldt Universität zu Berlin

11:00-11:03am	Session Introduction
11:03-11:23am	<b><u>The economic dependency of Ghana's cocoa sector on pollination services</u></b> (#6941) – Falk Krumbe, University of Hohenheim <i>*GTAP Conference Scholars Program Participant</i>
11:23-11:33am	Discussion
11:33-11:53am	<b><u>The economy-wide impacts of a large-scale electric fencing intervention in Bhutan</u></b> (#7025) – Arndt Feuerbacher, University of Hohenheim
11:53am-12:03pm	Discussion
12:03-12:23pm	<b><u>The forest content of global supply chains: which policy mitigation options</u></b> (#7028) – Etienne Berthet, Technical University of Denmark
12:23-12:33pm	Discussion
12:33-12:35pm	Session Closing

WEDNESDAY, JUNE 14

## Presentation Schedule

Presenters should arrive to their assigned session room 10 minutes prior to the start of the session with their presentation on a USB drive in both PowerPoint and PDF formats. Times listed within each session are targets and may vary slightly based on how the session is running.

**Looking for a paper?**

Search by ID# at: [www.gtap.org/events/conferences/2023/](http://www.gtap.org/events/conferences/2023/)

Time (CEST, UTC+2)	Event	Location
11:00am-12:35pm	Session 5	Rm 2B

**“Climate Policies”**

**Session Chair:** **Alla Golub**, Center for Global Trade Analysis, Purdue University

11:00-11:03am	Session Introduction
11:03-11:23am	<b><u>Micro-level Employment Impacts of Climate Policies</u></b> (#6971) – <b>Niven Winchester</b> , Auckland University of Technology
11:23-11:33am	Discussion
11:33-11:53am	<b><u>Provincial Assessment of the Impacts of Coal Phase-out in China using the GTAP-E-Power model</u></b> (#6993) – <b>Ines Benachir</b> , Tsinghua Berkeley Shenzhen Institute <i>*GTAP Conference Scholars Program Participant</i>
11:53am-12:03pm	Discussion
12:03-12:23pm	<b><u>Accelerating a global just transition with climate finance</u></b> (#7024) – <b>Sneha Thube</b> , International Monetary Fund
12:23-12:33pm	Discussion
12:33-12:35pm	Session Closing

**WEDNESDAY, JUNE 14****Presentation Schedule**

Presenters should arrive to their assigned session room 10 minutes prior to the start of the session with their presentation on a USB drive in both PowerPoint and PDF formats. Times listed within each session are targets and may vary slightly based on how the session is running.

**Looking for a paper?**

Search by ID# at: [www.gtap.org/events/conferences/2023/](http://www.gtap.org/events/conferences/2023/)

Time (CEST, UTC+2)	Event	Location
11:00am-12:35pm	Session 6	Rm 3B

***“Digital Economy and Education Modeling”***

**Session Chair:** Meriem Hamdi-Cherif, OFCE Sciences Po - French Economic Observatory

11:00-11:03am	Session Introduction
11:03-11:23am	<b><u>Impact of Digital Economy on Chinese Regional Economy - Empirical Analysis Based on Chinese Regional SAM</u></b> (#6920) – <b>Lingling Zhou</b> , China University of Geosciences Beijing
11:23-11:33am	Discussion
11:33-11:53am	<b><u>The Educational Inequality and its impact on employment in Morocco: An Assessment Using a dynamic CGE Model</u></b> (#6953) – <b>Mohammed-Ali Bougzime</b> , Cadi Ayyad University
11:53am-12:03pm	Discussion
12:03-12:23pm	<b><u>A Numerical Simulation of Educational Mismatch in the Italian Labor Market</u></b> (#6903) – <b>Roberto Roson</b> , Ca'Foscari University and Loyola Andalusia University
12:23-12:33pm	Discussion
12:33-12:35pm	Session Closing

**CANCELLED**

12:35-2:00pm (12:35-14:00)	Lunch	Main Hall/RE/RG
-------------------------------	-------	-----------------

WEDNESDAY, JUNE 14

## Presentation Schedule

Presenters should arrive to their assigned session room 10 minutes prior to the start of the session with their presentation on a USB drive in both PowerPoint and PDF formats. Times listed within each session are targets and may vary slightly based on how the session is running.

**Looking for a paper?**

Search by ID# at: [www.gtap.org/events/conferences/2023/](http://www.gtap.org/events/conferences/2023/)

Time (CEST, UTC+2)	Event	Location
<b>2:00-4:05pm</b> (14:00-16:05)	<b>Organized Session 7</b>	<b>Amphi Duguit</b>

***“Realizing Africa’s industrialization and diversification agenda, via the implementation of the African Continental Free Trade Area (AfCFTA) Agreement, considering environment and inclusivity”***

**Organized by:** **Simon Mevel**, United Nations Economic Commission for Africa  
**Lionel Fontagné**, Université Paris 1 / Centre d'Etudes Prospectives et d'Information Internationales

**Session Chair:** **Stephen Karingi**, United Nations Economic Commission for Africa

<b>2:00-2:03pm</b> (14:00-14:03)	<b>Session Introduction</b>
<b>2:03-2:23pm</b> (14:03-14:23)	<b><u>Country-level implications of AfCFTA Agreement’s implementation on inequality and poverty</u></b> (#6968) – <b>Simon Mevel</b> , United Nations Economic Commission for Africa
<b>2:23-2:33pm</b> (14:23-14:33)	<b>Discussion</b>
<b>2:33-2:53pm</b> (14:33-14:53)	<b><u>Trade and Infrastructure Integration in Africa</u></b> (#6858) – <b>Gianluca Santoni</b> , CEPII
<b>2:53-3:03pm</b> (14:53-15:03)	<b>Discussion</b>
<b>3:03-3:23pm</b> (15:03-15:23)	<b><u>Industrialization and Economic Diversification – Keys to Unlocking the Full Potential of the AfCFTA – A Case Study for Central Africa</u></b> (#7002) – <b>Caitlyn Carrico</b> , United Nations Economic Commission for Africa
<b>3:23-3:33pm</b> (15:23-15:33)	<b>Discussion</b>
<b>3:33-3:53pm</b> (15:33-15:53)	<b><u>Greening the African Continental Free Trade Area</u></b> (#6937) – <b>Yu Zheng</b> , CEPII
<b>3:53-4:03pm</b> (15:53-16:03)	<b>Discussion</b>
<b>4:03-4:05pm</b> (16:03-16:05)	<b>Session Closing</b>

WEDNESDAY, JUNE 14

## Presentation Schedule

Presenters should arrive to their assigned session room 10 minutes prior to the start of the session with their presentation on a USB drive in both PowerPoint and PDF formats. Times listed within each session are targets and may vary slightly based on how the session is running.

**Looking for a paper?**

Search by ID# at: [www.gtap.org/events/conferences/2023/](http://www.gtap.org/events/conferences/2023/)

Time (CEST, UTC+2)	Event	Location
<b>2:00-4:05pm</b> (14:00-16:05)	<b>Organized Session 8</b>	<b>Rm 1F</b>

### ***“Modelling the economic consequences of Russia’s war against Ukraine”***

**Organized by:** Matthias Weitzel, European Commission - Joint Research Centre

**Session Chair:** Matthias Weitzel, European Commission - Joint Research Centre

<b>2:00-2:03pm</b> (14:00-14:03)	<b>Session Introduction</b>
<b>2:03-2:23pm</b> (14:03-14:23)	<b><u>The Economic Impact of Trade Sanctions Following the Russian Invasion of Ukraine</u></b> (#6866) – <b>Alessandro Antimiani</b> , European Commission, DG TRADE
<b>2:23-2:33pm</b> (14:23-14:33)	<b>Discussion</b>
<b>2:33-2:53pm</b> (14:33-14:53)	<b><u>Possible economic effects of Russia’s war of aggression and resulting sanctions</u></b> (#6883) – <b>Przemyslaw Kowalski</b> , OECD
<b>2:53-3:03pm</b> (14:53-15:03)	<b>Discussion</b>
<b>3:03-3:23pm</b> (15:03-15:23)	<b><u>The War in Ukraine Disrupts Agricultural Value Chains, but Trade Policy Measures Can Mitigate the Impacts</u></b> (#6948) – <b>Maria Filipa Seara Pereira</b> , Center for Global Trade Analysis, Purdue University
<b>3:23-3:33pm</b> (15:23-15:33)	<b>Discussion</b>
<b>3:33-3:53pm</b> (15:33-15:53)	<b><u>Modelling the effect of higher energy prices on the EU economy</u></b> (#6799) – <b>Matthias Weitzel</b> , European Commission - Joint Research Centre
<b>3:53-4:03pm</b> (15:53-16:03)	<b>Discussion</b>
<b>4:03-4:05pm</b> (16:03-16:05)	<b>Session Closing</b>

WEDNESDAY, JUNE 14

## Presentation Schedule

Presenters should arrive to their assigned session room 10 minutes prior to the start of the session with their presentation on a USB drive in both PowerPoint and PDF formats. Times listed within each session are targets and may vary slightly based on how the session is running.

**Looking for a paper?**

Search by ID# at: [www.gtap.org/events/conferences/2023/](http://www.gtap.org/events/conferences/2023/)

Time (CEST, UTC+2)	Event	Location
<b>2:00-4:05pm</b> (14:00-16:05)	<b>Organized Session 9</b>	<b>Rm 1J</b>

***“Moving Your Classroom Online - It's a Different World”***

**Organized by:** Mary Burfisher, Center for Global Trade Analysis, Purdue University

**Session Chair:** Amanda M. Countryman, Colorado State University

**Discussant:** Bernard Decaluwe, Université Laval

**2:00-2:03pm**  
(14:00-14:03)

**Session Introduction**

**2:03-2:23pm**  
(14:03-14:23)

**GTAP University Experience in Online Learning (#6816)**  
– Zeynep Akgul, Center for Global Trade Analysis, Purdue University

**2:23-2:33pm**  
(14:23-14:33)

**Discussion**

**2:33-2:53pm**  
(14:33-14:53)

**UNI-CGE: An Intuitive Policy Analysis Tool (#6817)**  
– Karen Thierfelder, USNA-ECONOMICS DEPT

**2:53-3:03pm**  
(14:53-15:03)

**Discussion**

**3:03-3:23pm**  
(15:03-15:23)

**Online CGE Training for Developing Country Researchers: The PEP Experience (#6818)**  
– Veronique Robichaud, CIRPEE Université Laval

**3:23-3:33pm**  
(15:23-15:33)

**Discussion**

**3:33-3:53pm**  
(15:33-15:53)

**Developing an Engaging Online Learning Experience (#6819)**  
– Mary Burfisher, Center for Global Trade Analysis, Purdue University

**3:53-4:03pm**  
(15:53-16:03)

**Discussion**

**4:03-4:05pm**  
(16:03-16:05)

**Session Closing**



WEDNESDAY, JUNE 14

## Presentation Schedule

Presenters should arrive to their assigned session room 10 minutes prior to the start of the session with their presentation on a USB drive in both PowerPoint and PDF formats. Times listed within each session are targets and may vary slightly based on how the session is running.

**Looking for a paper?**

Search by ID# at: [www.gtap.org/events/conferences/2023/](http://www.gtap.org/events/conferences/2023/)

Time (CEST, UTC+2)	Event	Location
<b>2:00-4:05pm</b> (14:00-16:05)	<b>Organized Session 10</b>	<b>Rm 1K</b>

## ***“Multi-scale Sustainability Analysis of the Earth’s Land and Water Resources using SIMPLE-G”***

**Organized by:** Thomas Hertel, Center for Global Trade Analysis, Purdue University

**Session Chair:** Dominique van der Mensbrugge, Center for Global Trade Analysis, Purdue University

**2:00-2:03pm**  
(14:00-14:03)

**Session Introduction**

**2:03-2:23pm**  
(14:03-14:23)

**Overview of Recent Developments in SIMPLE-G, a Framework for Multi-scale Analysis of Sustainability (#6899)**

– Thomas Hertel, Center for Global Trade Analysis, Purdue University

**2:23-2:33pm**  
(14:23-14:33)

**Discussion**

**2:33-2:53pm**  
(14:33-14:53)

**SIMPLE-G model, data, parameters, and implementation (#7004)**

– Iman Haqiqi, Center for Global Trade Analysis, Purdue University

**2:53-3:03pm**  
(14:53-15:03)

**Discussion**

**3:03-3:23pm**  
(15:03-15:23)

**Labor market rigidities mediate the effectiveness and distributional impacts of conservation policies (#7027)**

– Srabashi Ray, Center for Global Trade Analysis, Purdue University

**3:23-3:33pm**  
(15:23-15:33)

**Discussion**

**3:33-3:53pm**  
(15:33-15:53)

**SIMPLE-G in the Classroom (#6959)**

– Elizabeth Fraysse, Center for Global Trade Analysis, Purdue University

**3:53-4:03pm**  
(15:53-16:03)

**Discussion**

**4:03-4:05pm**  
(16:03-16:05)

**Session Closing**

**CANCELLED**



WEDNESDAY, JUNE 14

## Presentation Schedule

Presenters should arrive to their assigned session room 10 minutes prior to the start of the session with their presentation on a USB drive in both PowerPoint and PDF formats. Times listed within each session are targets and may vary slightly based on how the session is running.

**Looking for a paper?**

Search by ID# at: [www.gtap.org/events/conferences/2023/](http://www.gtap.org/events/conferences/2023/)

Time (CEST, UTC+2)	Event	Location
<b>2:00-4:05pm</b> (14:00-16:05)	<b>Session 11</b>	<b>Rm 1L</b>

***“Model Extension and Development”***

**Session Chair:** Maureen Rimmer, Centre of Policy Studies

<b>2:00-2:03pm</b> (14:00-14:03)	<b>Session Introduction</b>
<b>2:03-2:23pm</b> (14:03-14:23)	<b><u>Estimating the economic stranded value from climate change physical risks using sector-specific capital and investments in a CGE model</u> (#6837)</b> – <b>Ramiro Parrado</b> , Fondazione Centro Euro-Mediterraneo sui Cambiamenti Climatici (CMCC)
<b>2:23-2:33pm</b> (14:23-14:33)	<b>Discussion</b>
<b>2:33-2:53pm</b> (14:33-14:53)	<b><u>Incorporating State by Country Trade into the WiNDC Database and its Policy Implications</u> (#6828)</b> – <b>Alan Fox</b> , US International Trade Commission (USITC)
<b>2:53-3:03pm</b> (14:53-15:03)	<b>Discussion</b>
<b>3:03-3:23pm</b> (15:03-15:23)	<b><u>Causal Decomposition in Applied General Equilibrium Modelling: Mapping the Black Box</u> (#6936)</b> – <b>Joseph Lansley</b> , Department for International Trade, UK Civil Service
<b>3:23-3:33pm</b> (15:23-15:33)	<b>Discussion</b>
<b>3:33-3:53pm</b> (15:33-15:53)	<b><u>Modeling interacting tariff-rate quotas in the CGEbox</u> (#6849)</b> – <b>Tatjana Döbeling</b> , Thünen-Institut
<b>3:53-4:03pm</b> (15:53-16:03)	<b>Discussion</b>
<b>4:03-4:05pm</b> (16:03-16:05)	<b>Session Closing</b>

WEDNESDAY, JUNE 14

## Presentation Schedule

Presenters should arrive to their assigned session room 10 minutes prior to the start of the session with their presentation on a USB drive in both PowerPoint and PDF formats. Times listed within each session are targets and may vary slightly based on how the session is running.

**Looking for a paper?**

Search by ID# at: [www.gtap.org/events/conferences/2023/](http://www.gtap.org/events/conferences/2023/)

Time (CEST, UTC+2)	Event	Location
<b>2:00-4:05pm</b> (14:00-16:05)	<b>Session 12</b>	<b>Rm 2B</b>

***“Transportation and Infrastructure”***

**Session Chair:** Hugo Rojas-Romagosa, International Monetary Fund

**2:00-2:03pm**  
(14:00-14:03)

**Session Introduction**

**2:03-2:23pm**  
(14:03-14:23)

**Decarbonizing Road Transportation in Korea : A Policy Analysis Using an Integrated Computable General Equilibrium Model (#6879)**  
– **Hyungwoo Lim**, Korea Environment Institute

**2:23-2:33pm**  
(14:23-14:33)

**Discussion**

**2:33-2:53pm**  
(14:33-14:53)

**Integrating air passenger and air freight transport into a global CGE model to analyse European Union policies tackling greenhouse gas emissions from aviation (#6906)**  
– **Rafael Garaffa**, European Commission - JRC Seville

**2:53-3:03pm**  
(14:53-15:03)

**Discussion**

**3:03-3:23pm**  
(15:03-15:23)

**The economy-wide impact of investment in energy infrastructure development in Burkina Faso (#6984)**  
– **Yacouba Ouedraogo**, University of Stellenbosch  
*\*GTAP Conference Scholars Program Participant*

**3:23-3:33pm**  
(15:23-15:33)

**Discussion**

**3:33-3:53pm**  
(15:33-15:53)

**Macro-economic impacts of low-carbon infrastructure investments in France (#6848)**  
– **Meriem Hamdi-Cherif**, OFCE Sciences Po - French Economic Observatory

**3:53-4:03pm**  
(15:53-16:03)

**Discussion**

**4:03-4:05pm**  
(16:03-16:05)

**Session Closing**

WEDNESDAY, JUNE 14

## Presentation Schedule

Presenters should arrive to their assigned session room 10 minutes prior to the start of the session with their presentation on a USB drive in both PowerPoint and PDF formats. Times listed within each session are targets and may vary slightly based on how the session is running.

**Looking for a paper?**Search by ID# at: [www.gtap.org/events/conferences/2023/](http://www.gtap.org/events/conferences/2023/)

Time (CEST, UTC+2)	Event	Location
<b>2:00-4:05pm</b> (14:00-16:05)	<b>Session 13</b>	<b>Rm 3B</b>

**“Economic Crisis”**

**Session Chair:** **Natalie Soroka**, International Trade Administration

**2:00-2:03pm**  
(14:00-14:03)

**Session Introduction**

**2:03-2:23pm**  
(14:03-14:23)

**The changing perception of globalization and its impact on trade – Evidence from the USA** (#6822)  
– **Daniel Staehr**, FernUniversitaet in Hagen

**2:23-2:33pm**  
(14:23-14:33)

**Discussion**

**2:33-2:53pm**  
(14:33-14:53)

**Walking the Tightrope: Balancing the Impacts of Global Decoupling and Trade Agreements** (#6891)  
– **David Radi**, DIT

**2:53-3:03pm**  
(14:53-15:03)

**Discussion**

**3:03-3:23pm**  
(15:03-15:23)

**The Covid-response measures in Argentina: a CGE assessment over labor informality and gender-gaps** (#6895)  
– **Maria Laura Ojeda**, University of Buenos Aires

**3:23-3:33pm**  
(15:23-15:33)

**Discussion**

**3:33-3:53pm**  
(15:33-15:53)

**Food and energy crisis – inflation is back: real vs monetary CGE models** (#7021)  
– **Ragchaasuren Galindev**, World Bank

**3:53-4:03pm**  
(15:53-16:03)

**Discussion**

**4:03-4:05pm**  
(16:03-16:05)

**Session Closing**

CANCELLED



WEDNESDAY, JUNE 14

## Presentation Schedule

Presenters should arrive to their assigned session room 10 minutes prior to the start of the session with their presentation on a USB drive in both PowerPoint and PDF formats. Times listed within each session are targets and may vary slightly based on how the session is running.

**Looking for a paper?**

Search by ID# at: [www.gtap.org/events/conferences/2023/](http://www.gtap.org/events/conferences/2023/)

Time (CEST, UTC+2)	Event	Location
<b>4:05-4:35pm</b> (16:05-16:35)	<b>Coffee Break</b>	<b>Main Hall/RE/RG</b>

<b>4:35-6:10pm</b> (16:35-18:10)	<b>Organized Session 14</b>	<b>Rm 1F</b>
-------------------------------------	-----------------------------	--------------

***“Modeling economy, energy and environment interactions using the GTAP-RD (Recursive Dynamic) model”***

**Organized by:** Erwin Corong, Center for Global Trade Analysis, Purdue University

**Session Chair:** Erwin Corong, Center for Global Trade Analysis, Purdue University

**4:35-4:38pm**  
(16:35-16:38) **Session Introduction**

**4:38-4:58pm**  
(16:38-16:58) **A flexible Approach to Modeling Carbon Pricing and Carbon Border Adjustment in the GTAP-E model** (#6815)  
– **Francesco Clora**, Department of Food and Resource Economics, University of Copenhagen

**4:58-5:08pm**  
(16:58-17:08) **Discussion**

**5:08-5:28pm**  
(17:08-17:28) **Projecting long-term global energy production and consumption patterns using the GTAP-Power-AEZ Recursive Dynamic model** (#6867)  
– **Shenjie Chen**, Office of the Chief Economist, Global Affairs Canada

**5:28-5:38pm**  
(17:28-17:38) **Discussion**

**5:38-5:58pm**  
(17:38-17:58) **GTAP Integrated Assessment Model (GTAP-IAM)** (#6868)  
– **Erwin Corong**, Center for Global Trade Analysis, Purdue University

**5:58-6:08pm**  
(17:58-18:08) **Discussion**

**6:08-6:10pm**  
(18:08-18:10) **Session Closing**

WEDNESDAY, JUNE 14

## Presentation Schedule

Presenters should arrive to their assigned session room 10 minutes prior to the start of the session with their presentation on a USB drive in both PowerPoint and PDF formats. Times listed within each session are targets and may vary slightly based on how the session is running.

**Looking for a paper?**

Search by ID# at: [www.gtap.org/events/conferences/2023/](http://www.gtap.org/events/conferences/2023/)

Time (CEST, UTC+2)	Event	Location
<b>4:35-6:10pm</b> (16:35-18:10)	<b>Organized Session 15</b>	<b>Rm 1J</b>

***“Addressing modelling challenges: Brexit through difference lens, Biden’s Inflation Reduction Act and issues in Gender Modelling”***

**Organized by:** Gabriela Ortiz Valverde, Universidad Nacional de Costa Rica

**Session Chair:** Gabriela Ortiz Valverde, Universidad Nacional de Costa Rica

**4:35-4:38pm**  
(16:35-16:38) **Session Introduction**

**4:38-4:58pm**  
(16:38-16:58) **On some challenges in the analysis of gender issues: CGE and econometric perspectives for policy analysis (#6947)**

– **María C. Latorre**, Universidad Complutense de Madrid

**4:58-5:08pm**  
(16:58-17:08) **Discussion**

**5:08-5:28pm**  
(17:08-17:28) **Challenges in Greening the Economies: A CGE Analysis of the Inflation Reduction Act (IRA) (#7029)**

– **David Suarez-Cuesta**, Universidad Complutense de Madrid

**5:28-5:38pm**  
(17:28-17:38) **Discussion**

**5:38-5:58pm**  
(17:38-17:58) **Challenges in estimating the economic impact of Brexit: A comparative analysis of the short and long run effects using gravity and CGEs (#6834)**

– **Gabriela Ortiz Valverde**, Universidad Nacional de Costa Rica

**5:58-6:08pm**  
(17:58-18:08) **Discussion**

**6:08-6:10pm**  
(18:08-18:10) **Session Closing**

WEDNESDAY, JUNE 14

## Presentation Schedule

Presenters should arrive to their assigned session room 10 minutes prior to the start of the session with their presentation on a USB drive in both PowerPoint and PDF formats. Times listed within each session are targets and may vary slightly based on how the session is running.

**Looking for a paper?**

Search by ID# at: [www.gtap.org/events/conferences/2023/](http://www.gtap.org/events/conferences/2023/)

Time (CEST, UTC+2)	Event	Location
<b>4:35-6:10pm</b> (16:35-18:10)	<b>Session 16</b>	<b>Rm 1K</b>

**“CGE Modeling”**

**Session Chair:** **Zeynep Akgul**, Center for Global Trade Analysis, Purdue University

**4:35-4:38pm**  
(16:35-16:38) **Session Introduction**

**4:38-4:58pm**  
(16:38-16:58) **Constructing input-output tables and a CGE database for Afghanistan (#7018)**  
– **Khwaja Muhammad Ahmadzai**, World Trade Institute

**4:58-5:08pm**  
(16:58-17:08) **Discussion**

**5:08-5:28pm**  
(17:08-17:28) **A Computable General Equilibrium Theory of Heterogeneous Firms with Product Quality Differentiation (#6820)**  
– **Yaghoob Jafari**, University of Bonn

**5:28-5:38pm**  
(17:28-17:38) **Discussion**

**5:38-5:58pm**  
(17:38-17:58) **Macroeconomic challenges of energy transitions: the case of Algeria (#6836)**  
– **Haned Hadjer**, École Nationale Supérieure de Statistique et de l'économie Appliquée

**5:58-6:08pm**  
(17:58-18:08) **Discussion**

**6:08-6:10pm**  
(18:08-18:10) **Session Closing**

WEDNESDAY, JUNE 14

## Presentation Schedule

Presenters should arrive to their assigned session room 10 minutes prior to the start of the session with their presentation on a USB drive in both PowerPoint and PDF formats. Times listed within each session are targets and may vary slightly based on how the session is running.

**Looking for a paper?**

Search by ID# at: [www.gtap.org/events/conferences/2023/](http://www.gtap.org/events/conferences/2023/)

Time (CEST, UTC+2)	Event	Location
<b>4:35-6:10pm</b> (16:35-18:10)	<b>Session 17</b>	<b>Rm 1L</b>

***“Risks and Consequences of Natural Disasters”***

**Session Chair:** Iman Haqiqi, Center for Global Trade Analysis, Purdue University

**4:35-4:38pm**  
(16:35-16:38)

**Session Introduction**

**4:38-4:58pm**  
(16:38-16:58)

**Global economic consequences arising from the impacts of physical climate risks on agriculture and energy (#6986)**

- **Roshen Fernando**, The Australian National University  
*\*Wallace E. Tyner Travel Funding Award Recipient*

**4:58-5:08pm**  
(16:58-17:08)

**Discussion**

**5:08-5:28pm**  
(17:08-17:28)

**Disaster Risk and Resilience (#7007)**

- **d'Artis Kancs**, European Commission

**5:28-5:38pm**  
(17:28-17:38)

**Discussion**

**5:38-5:58pm**  
(17:38-17:58)

**The impact of a range of natural disasters in various economies on the world economy (#7030)**

- **Sascha Suessspeck**

**5:58-6:08pm**  
(17:58-18:08)

**Discussion**

**6:08-6:10pm**  
(18:08-18:10)

**Session Closing**



WEDNESDAY, JUNE 14

## Presentation Schedule

Presenters should arrive to their assigned session room 10 minutes prior to the start of the session with their presentation on a USB drive in both PowerPoint and PDF formats. Times listed within each session are targets and may vary slightly based on how the session is running.

**Looking for a paper?**

Search by ID# at: [www.gtap.org/events/conferences/2023/](http://www.gtap.org/events/conferences/2023/)

Time (CEST, UTC+2)	Event	Location
<b>4:35-6:10pm</b> (16:35-18:10)	<b>Session 18</b>	<b>Rm 2B</b>

***“Climate Impacts (Europe)”***

**Session Chair:** Catherine Milot, Department for International Trade

**4:35-4:38pm**  
(16:35-16:38) **Session Introduction**

**4:38-4:58pm**  
(16:38-16:58) **Assessing macro-economic effects of climate impacts on labour productivity in EU sub-national regions** (#6861)  
– **Gabriele Standardi**, CMCC - Euro-Mediterranean Center on Climate Change

**4:58-5:08pm**  
(16:58-17:08) **Discussion**

**5:08-5:28pm**  
(17:08-17:28) **Development of a global economic-land use model (GTEM-AEZ) for analysis of climate change impact and agricultural productivity** (#6821)  
– **Trang Tran**, CSIRO

**5:28-5:38pm**  
(17:28-17:38) **Discussion**

**5:38-5:58pm**  
(17:38-17:58) **The Environmental Effects of the EU-MERCOSUR FTA in induced GHG emissions from LUCC and energy sectors** (#6955)  
– **Jesús Alberto Mercado Córdova**, Seoul National University  
*\*GTAP Conference Scholars Program Participant*

**5:58-6:08pm**  
(17:58-18:08) **Discussion**

**6:08-6:10pm**  
(18:08-18:10) **Session Closing**

**WEDNESDAY, JUNE 14****Presentation Schedule**

Presenters should arrive to their assigned session room 10 minutes prior to the start of the session with their presentation on a USB drive in both PowerPoint and PDF formats. Times listed within each session are targets and may vary slightly based on how the session is running.

**Looking for a paper?**

Search by ID# at: [www.gtap.org/events/conferences/2023/](http://www.gtap.org/events/conferences/2023/)

Time (CEST, UTC+2)	Event	Location
<b>4:35-6:10pm</b> (16:35-18:10)	<b>Session 19</b>	<b>Rm 3B</b>

***“Food Security and Waste”***

**Session Chair:** Elena Ianchovichina, The World Bank

**4:35-4:38pm**  
(16:35-16:38) **Session Introduction**

**4:38-4:58pm**  
(16:38-16:58) **Designing policies towards economic resilience and food security during turbulent times: an application to the Kenyan economy (#6844)**  
– Victor Nechifor, Joint Research Centre

**4:58-5:08pm**  
(16:58-17:08) **Discussion**

**5:08-5:28pm**  
(17:08-17:28) **All-encompassing analysis of reaching food waste reduction targets: A model-based assessment of reducing food waste in the EU (#6900)**  
– Beyhan De Jong, Joint Research Center - European Commission

**5:28-5:38pm**  
(17:28-17:38) **Discussion**

**5:38-5:58pm**  
(17:38-17:58) **Modelling of food waste from farm to fork within a CGE framework (#6907)**  
– Heleen Bartelings, Wageningen Economic Research

**5:58-6:08pm**  
(17:58-18:08) **Discussion**

**6:08-6:10pm**  
(18:08-18:10) **Session Closing**

PRESENTATION ORDER CHANGE

**WEDNESDAY, JUNE 14****Presentation Schedule**

Presenters should arrive to their assigned session room 10 minutes prior to the start of the session with their presentation on a USB drive in both PowerPoint and PDF formats. Times listed within each session are targets and may vary slightly based on how the session is running.

**Looking for a paper?**

Search by ID# at: [www.gtap.org/events/conferences/2023/](http://www.gtap.org/events/conferences/2023/)

<b>Time</b> (CEST, UTC+2)	<b>Event</b>	<b>Location</b>
<b>6:10-8:30pm</b> (18:10-20:30)	<b>Reception and Recognition/Awards Ceremony</b>	<b>Main Hall/RE/RG</b>

**Recognition/Awards Ceremony** (7:00pm / 19:00)

- Conference Co-Organizers
- Alan A. Powell Award
- GTAP Hall of Fame
- GTAP Research Fellows
- Early Career Researcher Travel Funding Awards
- GTAP Conference Scholars Program

THURSDAY, JUNE 15

## Session Overview

Session details for this day are listed on pages 37-61. You can also access the conference schedule through the **Whova** mobile app (see page 4).

CEST (UTC+2)	Amphi Duguit	Rm 1J	Rm 1K	Rm 1L	Rm 2B	Rm 3B
<b>9:00-11:05am</b>	<b>*Session #20</b>  <i>Modeling Circular Economy Transition: Cases of Plastic, Food Waste and Construction Materials</i>  Pg. 37	<b>*Session #21</b>  <i>The 3<sup>rd</sup> Seminar on Bridging the Gap between CGE and NQTM: Environment and Resources for the Future</i>  Pg. 38	<b>*Session #22</b>  <i>Modelling agricultural policy reform for a more sustainable future</i>  Pg. 39	<b>Session #23</b>  <i>Software and Modeling Innovations</i>  Pg. 40	<b>Session #24</b>  <i>Climate Change Policy (Asia)</i>  Pg. 41	<b>Session #25</b>  <i>Global Effects of the War in Ukraine</i>  Pg. 42
<b>11:35am-1:10pm</b> (11:35-13:10)	<b>*Session #26</b>  <i>Circular Economy Transition: Country Case Studies</i>  Pg. 43	<b>*Session #27</b>  <i>Land Use and Sustainability Analysis in Brazil</i>  Pg. 44	<b>Session #28</b>  <i>Agricultural Policies</i>  Pg. 45	<b>Session #29</b>  <i>Climate Change and Environmental Policies</i>  Pg. 46	<b>Session #30</b>  <i>Trade and Tax Policies: Australia</i>  Pg. 47	<b>Session #31</b>  <i>Net-Zero Transitions</i>  Pg. 48
<b>2:30-4:35pm</b> (14:30-16:35)	<b>*Session #32</b>  <i>Carbon Border Adjustment Mechanism and Climate Mitigation: Economic Implications and Policy Challenges</i>  Pg. 49	<b>Session #33</b>  <i>Emerging data and methods for simulating household decisions, labor mobility, and gendered wage discrimination</i>  Pg. 50	<b>Session #34</b>  <i>Assessment of Biodiversity Impacts using Agricultural and Economic Models</i>  Pg. 51	<b>Session #35</b>  <i>AfCFTA and economic transformation in Africa</i>  Pg. 52	<b>Session #36</b>  <i>Land Use</i>  Pg. 53	<b>Session #37</b>  <i>Non-Tariff Barriers</i>  Pg. 54
<b>5:05-6:40pm</b> (17:05-18:40)	<b>*Session #38</b>  <i>Shared Socio-Economic Pathways (SSPs): The past, the future and diagnostics</i>  Pg. 55	<b>Session #39</b>  <i>Land Use</i>  Pg. 56	<b>Session #40</b>  <i>African Continental Free Trade Area (AfCFTA)</i>  Pg. 57	<b>Session #41</b>  <i>Industry-specific Economic Effects</i>  Pg. 58	<b>Session #42</b>  <i>Fossil Fuels and Emissions</i>  Pg. 59	<b>Session #43</b>  <i>Economic Transitions</i>  Pg. 60

CEST Central European Summer Time

\*Organized Session

**THURSDAY, JUNE 15****Presentation Schedule**

Presenters should arrive to their assigned session room 10 minutes prior to the start of the session with their presentation on a USB drive in both PowerPoint and PDF formats. Times listed within each session are targets and may vary slightly based on how the session is running.

**Looking for a paper?**

Search by ID# at: [www.gtap.org/events/conferences/2023/](http://www.gtap.org/events/conferences/2023/)

Time (CEST, UTC+2)	Event	Location
8:00am-5:00pm (8:00-17:00)	Onsite Check-in	Main Hall

9:00-11:05am	Organized Session 20	Amphi Duguit
--------------	----------------------	--------------

## ***“Modeling Circular Economy Transition: Cases of Plastic, Food Waste and Construction Materials”***

**Organized by:** Maksym Chepeliev, Center for Global Trade Analysis, Purdue University

**Session Chair:** Rob Dellink, OECD

9:00-9:03am	Session Introduction
9:03-9:23am	<b><u>Modelling plastic pollution in Asia: methodology and baseline projections to 2060</u></b> (#6969) – Ruben Bibas, OECD
9:23-9:33am	Discussion
9:33-9:53am	<b><u>Economic and environmental impacts of policies promoting a circular food system with a specific role for livestock in the EU</u></b> (#6992) – Alessandro Gatto, Wageningen University and Research
9:53-10:03am	Discussion
10:03-10:23am	<b><u>Building Green: Economic Implications of Greening the Construction Value Chains in Emerging Markets</u></b> (#6896) – Lucio Castro, IFC
10:23-10:33am	Discussion
10:33-11:03am	Discussant – Maksym Chepeliev, Center for Global Trade Analysis, Purdue University
11:03-11:05am	Session Closing

THURSDAY, JUNE 15

## Presentation Schedule

Presenters should arrive to their assigned session room 10 minutes prior to the start of the session with their presentation on a USB drive in both PowerPoint and PDF formats. Times listed within each session are targets and may vary slightly based on how the session is running.

**Looking for a paper?**

Search by ID# at: [www.gtap.org/events/conferences/2023/](http://www.gtap.org/events/conferences/2023/)

Time (CEST, UTC+2)	Event	Location
9:00-11:05am	Organized Session 21	Rm 1J

***“The 3<sup>rd</sup> Seminar on Bridging the Gap between CGE and NQTM: Environment and Resources for the Future”***

**Organized by:** Konstantinos Arkolakis, Yale University  
Anton Yang, Department of Economics, Yale University

**Session Chair:** Farzad Taheripour, Department of Agricultural Economics, Purdue University

9:00-9:03am	Session Introduction
9:03-9:23am	<b><u>Water scarcity, climate change and potential collaboration in water management in the Middle East</u></b> (#7006) – Omid Karami, Department of Agricultural Economics, Purdue University
9:23-9:33am	Discussion
9:33-9:53am	<b><u>Clean Water</u></b> (#6987) – Anton Yang, Department of Economics, Yale University
9:53-10:03am	Discussion
10:03-10:23am	<b><u>The impact of climate change on crop yields is heterogeneous: Evidence from China</u></b> (#6965) – Xiaotian Liu, Huazhong Agricultural University
10:23-10:33am	Discussion
10:33-10:53am	<b><u>Confronting the double burden of malnutrition generates health and environmental benefits</u></b> (#7026) – Emiliano Lopez Barrera, Texas A&M University
10:53-11:03am	Discussion
11:03-11:05am	Session Closing

THURSDAY, JUNE 15

## Presentation Schedule

Presenters should arrive to their assigned session room 10 minutes prior to the start of the session with their presentation on a USB drive in both PowerPoint and PDF formats. Times listed within each session are targets and may vary slightly based on how the session is running.

**Looking for a paper?**

Search by ID# at: [www.gtap.org/events/conferences/2023/](http://www.gtap.org/events/conferences/2023/)

Time (CEST, UTC+2)	Event	Location
9:00-11:05am	Organized Session 22	Rm 1K

### ***“Modelling agricultural policy reform for a more sustainable future”***

**Organized by:** Hugo Valin, OECD

**Session Chair:** Frank van Tongeren, Organisation for Economic Co-operation and Development

9:00-9:03am Session Introduction

9:03-9:23am **Modelling Agricultural Domestic Support and Consumer Tax Equivalents** (#6954)  
– Anna Strutt, University of Waikato

9:23-9:33am Discussion

9:33-9:53am **Agricultural support and climate change mitigation: data and modelling application** (#6995)  
– Hugo Valin, OECD

9:53-10:03am Discussion

10:03-10:23am **Repurposing food and agricultural policies to deliver affordable healthy diets, sustainably and inclusively: What is at stake?** (#7016)  
– David Laborde, FAO

10:23-10:33am Discussion

10:33-10:53am **Re-designing agricultural subsidies in sub-Saharan Africa** (#6857)  
– Florian Freund, Thünen Institute of Market Analysis

10:53-11:03am Discussion

11:03-11:05am Session Closing

THURSDAY, JUNE 15

## Presentation Schedule

Presenters should arrive to their assigned session room 10 minutes prior to the start of the session with their presentation on a USB drive in both PowerPoint and PDF formats. Times listed within each session are targets and may vary slightly based on how the session is running.

**Looking for a paper?**

Search by ID# at: [www.gtap.org/events/conferences/2023/](http://www.gtap.org/events/conferences/2023/)

Time (CEST, UTC+2)	Event	Location
9:00-11:05am	Session 23	Rm 1L

***“Software and Modeling Innovations”***

**Session Chair:** Mark Horridge, Centre of Policy Studies, Victoria University

9:00-9:03am	Session Introduction
9:03-9:23am	<b><u>The Future of GEMPACK</u></b> (#6823) – Florian Schiffmann, Victoria University
9:23-9:33am	Discussion
9:33-9:53am	<b><u>Towards consistent systematic sensitivity analysis in the GTAP model</u></b> (#6897) – Hitesh Shah, Department for Business and Trade
9:53-10:03am	Discussion
10:03-10:23am	<b><u>An open-source version of the MANAGE model with a Graphical User Interface</u></b> (#6845) – Wolfgang Britz, University of Bonn
10:23-10:33am	Discussion
10:33-10:53am	<b><u>Latin Hypercube Sampling for Sensitivity Analysis</u></b> (#6981) – Dominique van der Mensbrugge, Center for Global Trade Analysis, Purdue University
10:53-11:03am	Discussion
11:03-11:05am	Session Closing



THURSDAY, JUNE 15

## Presentation Schedule

Presenters should arrive to their assigned session room 10 minutes prior to the start of the session with their presentation on a USB drive in both PowerPoint and PDF formats. Times listed within each session are targets and may vary slightly based on how the session is running.

**Looking for a paper?**

Search by ID# at: [www.gtap.org/events/conferences/2023/](http://www.gtap.org/events/conferences/2023/)

Time (CEST, UTC+2)	Event	Location
9:00-11:05am	Session 24	Rm 2B

**“Climate Change Policy (Asia)”**

**Session Chair:** Erwin Corong, Center for Global Trade Analysis, Purdue University

9:00-9:03am	Session Introduction
9:03-9:23am	<b><u>Cost reduction in low carbon hydrogen: effective but insufficient to mitigate carbon emissions</u></b> (#6806) – Taoyuan Wei, CICERO Center for International Climate Research
9:23-9:33am	Discussion
9:33-9:53am	<b><u>The economic impacts of low-carbon transition in Asia: NDC and Net Zero Transition with International Carbon Market in Asia</u></b> (#6888) – Jongwoo Moon, Korea Environment Institute
9:53-10:03am	Discussion
10:03-10:23am	<b><u>Synergies and trade-offs between the net-zero transition and air quality policies in Korea</u></b> (#6974) – Jean Fouré, OECD
10:23-10:33am	Discussion
10:33-10:53am	<b><u>China’s Nationwide CO2 Emissions Trading System: A General Equilibrium Assessment</u></b> (#6853) – Lawrence Goulder, Stanford University
10:53-11:03am	Discussion
11:03-11:05am	Session Closing

THURSDAY, JUNE 15

## Presentation Schedule

Presenters should arrive to their assigned session room 10 minutes prior to the start of the session with their presentation on a USB drive in both PowerPoint and PDF formats. Times listed within each session are targets and may vary slightly based on how the session is running.

**Looking for a paper?**

Search by ID# at: [www.gtap.org/events/conferences/2023/](http://www.gtap.org/events/conferences/2023/)

Time (CEST, UTC+2)	Event	Location
9:00-11:05am	Session 25	Rm 3B
<b><i>“Global Effects of the War in Ukraine”</i></b>		
<b>Session Chair:</b>	<b>Russell Hillberry</b> , Department of Agricultural Economics, Purdue University	
9:00-9:03am	Session Introduction	
9:03-9:23am	<b><u>Medium-term macroeconomic effects of Russia's War in Ukraine and how it affects energy security and global emission targets</u></b> (#6988) – <b>Hugo Rojas-Romagosa</b> , International Monetary Fund	
9:23-9:33am	Discussion	
9:33-9:53am	<b><u>Agricultural and Economywide Effects of the Conflict in Ukraine</u></b> (#6996) – <b>Amanda M. Countryman</b> , Colorado State University	
9:53-10:03am	Discussion	
10:03-10:23am	<b><u>Potential Long-Term Impact of the War in Ukraine: A Polycrisis in Cyprus</u></b> (#7009) – <b>Sebnem Sahin</b> , BAU International	
10:23-10:33am	Discussion	
10:33-10:53am	<b><u>Impacts of the Russia-Ukraine War on women in four African countries</u></b> (#6893) – <b>Helene Maisonnave</b> , University of Le Havre	
10:53-11:03am	Discussion	
11:03-11:05am	Session Closing	
11:05-11:35am	Coffee Break	Main Hall/RE/RG

THURSDAY, JUNE 15

## Presentation Schedule

Presenters should arrive to their assigned session room 10 minutes prior to the start of the session with their presentation on a USB drive in both PowerPoint and PDF formats. Times listed within each session are targets and may vary slightly based on how the session is running.

**Looking for a paper?**

Search by ID# at: [www.gtap.org/events/conferences/2023/](http://www.gtap.org/events/conferences/2023/)

Time (CEST, UTC+2)	Event	Location
11:35am-12:40pm	Organized Session 26	Amphi Duguit

### ***“Circular Economy Transition: Country Case Studies”***

**Organized by:** Maksym Chepeliev, Center for Global Trade Analysis, Purdue University

**Session Chair:** Maksym Chepeliev, Center for Global Trade Analysis, Purdue University

11:35-11:38am Session Introduction

11:38-11:58am **Circular Economy Transition in Türkiye** (#6950)  
 – Maksym Chepeliev, Center for Global Trade Analysis, Purdue University

11:58am-12:08pm Discussion

12:08-12:28pm **Utilising domestic scrap steel: The impacts of increased secondary steel production in the UK** (#7020)  
 – Alvaro Calzadilla, KPMG LLP (UK)

12:28-12:38pm Discussion

12:38-12:40pm Session Closing

THURSDAY, JUNE 15

## Presentation Schedule

Presenters should arrive to their assigned session room 10 minutes prior to the start of the session with their presentation on a USB drive in both PowerPoint and PDF formats. Times listed within each session are targets and may vary slightly based on how the session is running.

**Looking for a paper?**

Search by ID# at: [www.gtap.org/events/conferences/2023/](http://www.gtap.org/events/conferences/2023/)

Time (CEST, UTC+2)	Event	Location
<b>11:35am-1:10pm</b> (11:35-13:10)	<b>Organized Session 27</b>	<b>Rm 1J</b>

### ***“Land Use and Sustainability Analysis in Brazil”***

**Organized by:** **Jing Liu**, Center for Global Trade Analysis, Purdue University

**Session Chair:** **Angelo Gurgel**, Massachusetts Institute of Technology

<b>11:35-11:38am</b>	<b>Session Introduction</b>
<b>11:38-11:58am</b>	<b><u>An Economic Evaluation of the Low Carbon Agriculture Credit Program in Brazil</u></b> (#6851) – <b>Joaquim Bento Ferreira-Filho</b> , Escola Superior de Agricultura Luiz de Queiroz
<b>11:58am-12:08pm</b>	<b>Discussion</b>
<b>12:08-12:28pm</b>	<b><u>Socioeconomic and environmental impacts of degraded pasture recovery in Brazil: contribution to the NDC</u></b> (#6850) – <b>Giovani Gianetti</b> , Escola Superior de Agricultura Luiz de Queiroz, Universidade de Sao Paulo <i>*Ken Pearson Travel Funding Award Recipient</i>
<b>12:28-12:38pm</b>	<b>Discussion</b>
<b>12:38-12:58pm</b>	<b><u>Grazing to feedlots: an integrated multi-scale analysis of ABC+ in Brazil by 2030</u></b> (#6800) – <b>Jing Liu</b> , Center for Global Trade Analysis, Purdue University
<b>12:58-1:08pm</b> (12:58-13:08)	<b>Discussion</b>
<b>1:08-1:10pm</b> (13:08-13:10)	<b>Session Closing</b>

**CANCELLED**



THURSDAY, JUNE 15

## Presentation Schedule

Presenters should arrive to their assigned session room 10 minutes prior to the start of the session with their presentation on a USB drive in both PowerPoint and PDF formats. Times listed within each session are targets and may vary slightly based on how the session is running.

**Looking for a paper?**

Search by ID# at: [www.gtap.org/events/conferences/2023/](http://www.gtap.org/events/conferences/2023/)

Time (CEST, UTC+2)	Event	Location
11:35am-1:10pm (11:35-13:10)	Session 28	Rm 1K

***“Agricultural Policies”***

**Session Chair:** Pierre Boulanger, CGIAR Independent Advisory and Evaluation Service

11:35-11:38am	Session Introduction
11:38-11:58am	<b><u>Analysis of Exogenous Shocks and Policy Reforms in Guyana’s Agricultural Sector</u></b> (#7019) – Will Martin, International Food Policy Research Institute (IFPRI)
11:58am-12:08pm	Discussion
12:08-12:28pm	<b><u>Toward sustainability in food-processing development: An empirically-based CGE analysis on the processing of cashew byproducts in Benin</u></b> (#7008) – Thierry Kinkpe, Humboldt-Universität zu Berlin
12:28-12:38pm	Discussion
12:38-12:58pm	<b><u>Economic impact of producing activated carbon from Sargassum and coconut to treat chlordecone-polluted land: a dynamic CGE model application</u></b> (#6830) – Bernard Decaluwe, Université Laval
12:58-1:08pm (12:58-13:08)	Discussion
1:08-1:10pm (13:08-13:10)	Session Closing

THURSDAY, JUNE 15

## Presentation Schedule

Presenters should arrive to their assigned session room 10 minutes prior to the start of the session with their presentation on a USB drive in both PowerPoint and PDF formats. Times listed within each session are targets and may vary slightly based on how the session is running.

**Looking for a paper?**

Search by ID# at: [www.gtap.org/events/conferences/2023/](http://www.gtap.org/events/conferences/2023/)

Time (CEST, UTC+2)	Event	Location
11:35am-1:10pm (11:35-13:10)	Session 29	Rm 1L

***“Climate Change and Environmental Policies”***

**Session Chair:** Ruth Delzeit, University of Basel

11:35-11:38am	Session Introduction
11:38-11:58am	<b><u>Modelling the potential to abate greenhouse gases from agriculture using detailed abatement technologies in a CGE model</u></b> (#6811) – Laerke Jensbye, University of Copenhagen
11:58am-12:08pm	Discussion
12:08-12:28pm	<b><u>CGE model with GHG Emissions and Extended Energy Sector</u></b> (#7014) – Olegs Matvejevs, Bank of Latvia
12:28-12:38pm	Discussion
12:38-12:58pm	<b><u>Are Long-term National Goals on Climate Change Mitigation and Economic Development Compatible? Evidence and Modelling on Several Case Studies</u></b> (#6982) – Auriane Meilland, CIRED
12:58-1:08pm (12:58-13:08)	Discussion
1:08-1:10pm (13:08-13:10)	Session Closing

THURSDAY, JUNE 15

## Presentation Schedule

Presenters should arrive to their assigned session room 10 minutes prior to the start of the session with their presentation on a USB drive in both PowerPoint and PDF formats. Times listed within each session are targets and may vary slightly based on how the session is running.

**Looking for a paper?**

Search by ID# at: [www.gtap.org/events/conferences/2023/](http://www.gtap.org/events/conferences/2023/)

Time (CEST, UTC+2)	Event	Location
<b>11:35am-1:10pm</b> (11:35-13:10)	<b>Session 30</b>	<b>Rm 2B</b>

***“Trade and Tax Policies: Australia”***

**Session Chair:** Jason Nassios, Centre of Policy Studies

**11:35-11:38am**      **Session Introduction**

**11:38-11:58am**      **Multilateral Context for EU-Australia Economic Cooperation** (#6902)  
– **Paul Gretton**, Australian National University

**11:58am-12:08pm**      **Discussion**

**12:08-12:28pm**      **Determination of housing prices in a CGE model of Australia with application to property tax reform** (#6802)  
– **Jason Nassios**, Centre of Policy Studies

**12:28-12:38pm**      **Discussion**

**12:38-12:58pm**      **To tax or to spend? Modelling tax policy responses to oil price shocks** (#6923)  
– **Xianglong Locky Liu**, Centre of Policy Studies, Victoria University

**12:58-1:08pm**  
(12:58-13:08)      **Discussion**

**1:08-1:10pm**  
(13:08-13:10)      **Session Closing**

THURSDAY, JUNE 15

## Presentation Schedule

Presenters should arrive to their assigned session room 10 minutes prior to the start of the session with their presentation on a USB drive in both PowerPoint and PDF formats. Times listed within each session are targets and may vary slightly based on how the session is running.

**Looking for a paper?**

Search by ID# at: [www.gtap.org/events/conferences/2023/](http://www.gtap.org/events/conferences/2023/)

Time (CEST, UTC+2)	Event	Location
<b>11:35am-1:10pm</b> (11:35-13:10)	<b>Session 31</b>	<b>Rm 3B</b>

**“Net-Zero Transitions”**

**Session Chair:** Ilaria Fusacchia, University of Roma Tre

**11:35-11:38am**      **Session Introduction**

**11:38-11:58am**      **Structural change and socio-economic disparities in a net zero transition** (#6841)  
– Julien Lefevre, CIRED

**11:58am-12:08pm**      **Discussion**

**12:08-12:28pm**      **The fiscal and economic consequences of a transition to net-zero in Spain** (#6886)  
– Alvaro Carbonell Rodriguez, OECD / London School of Economics

**12:28-12:38pm**      **Discussion**

**12:38-12:58pm**      **Coal Phase-out in the Turkish Power Sector towards Net-zero Emission Targets: An Integrated Assessment of Energy-Economy-Environment Modeling** (#6884)  
– Ebru Voyvoda, Middle East Technical Univ.

**12:58-1:08pm**  
(12:58-13:08)      **Discussion**

**1:08-1:10pm**  
(13:08-13:10)      **Session Closing**

<b>1:10-2:30pm</b> (13:10-14:30)	<b>Lunch</b>	<b>Main Hall/RE/RG</b>
-------------------------------------	--------------	------------------------



THURSDAY, JUNE 15

## Presentation Schedule

Presenters should arrive to their assigned session room 10 minutes prior to the start of the session with their presentation on a USB drive in both PowerPoint and PDF formats. Times listed within each session are targets and may vary slightly based on how the session is running.

**Looking for a paper?**

Search by ID# at: [www.gtap.org/events/conferences/2023/](http://www.gtap.org/events/conferences/2023/)

Time (CEST, UTC+2)	Event	Location
<b>2:30-4:35pm</b> (14:30-16:35)	<b>Organized Session 32</b>	<b>Amphi Duguit</b>

## ***“Carbon Border Adjustment Mechanism and Climate Mitigation: Economic Implications and Policy Challenges”***

**Organized by:** **Maksym Chepeliev**, Center for Global Trade Analysis, Purdue University  
**Claudia Gibis**, German Environment Agency

**Session Chair:** **Dominique van der Mensbrugge**, Center for Global Trade Analysis, Purdue University

**2:30-2:33pm**  
(14:30-14:33)

**Session Introduction**

**2:33-2:53pm**  
(14:33-14:53)

**Evaluating the economic and employment implications of GHG emission reductions using a CGE (GEM-E3) and a Macro-Econometric (GINFORS E) model: The role of macro closures, finance and resource utilization rate (#6917)**

– **Dimitris Fragkiadakis**, E3-Modelling S.A.

**2:53-3:03pm**  
(14:53-15:03)

**Discussion**

**3:03-3:23pm**  
(15:03-15:23)

**Unilateral EU climate action, carbon leakage and CBAM – scenario description and results from the GINFORS-E model (#6915)**

– **Christian Lutz**, Institute of Economic Structures Research

**3:23-3:33pm**  
(15:23-15:33)

**Discussion**

**3:33-3:53pm**  
(15:33-15:53)

**Carbon Border Adjustment Mechanism (CBAM) Explorer (#6990)**

– **Maryla Maliszewska**, The World Bank

**3:53-4:03pm**  
(15:53-16:03)

**Discussion**

**4:03-4:33pm**  
(16:03-16:33)

**Discussant**

– **Frank Gagelmann**, Federal Environmental Agency UBA

**4:33-4:35pm**  
(16:33-16:35)

**Session Closing**

THURSDAY, JUNE 15

## Presentation Schedule

Presenters should arrive to their assigned session room 10 minutes prior to the start of the session with their presentation on a USB drive in both PowerPoint and PDF formats. Times listed within each session are targets and may vary slightly based on how the session is running.

**Looking for a paper?**

Search by ID# at: [www.gtap.org/events/conferences/2023/](http://www.gtap.org/events/conferences/2023/)

Time (CEST, UTC+2)	Event	Location
<b>2:30-4:35pm</b> (14:30-16:35)	<b>Organized Session 33</b>	<b>Rm 1J</b>

***“Emerging data and methods for simulating household decisions, labor mobility, and gendered wage discrimination”***

**Organized by:** Hans Lofgren, Independent Researcher

**Session Chair:** Martin Cicowiez, CEDLAS-Universidad Nacional de La Plata

**2:30-2:33pm**  
(14:30-14:33) **Session Introduction**

**2:33-2:53pm**  
(14:33-14:53) **Meeting Dietary Needs of Poor Households under Stress: An Integrated Commodity/Food Group Household Simulation Model (#6898)**

– Sherman Robinson, International Food Policy Research Institute (IFPRI)

**2:53-3:03pm**  
(14:53-15:03) **Discussion**

**3:03-3:23pm**  
(15:03-15:23) **Estimating labor-market transition matrices and their determinants in low- and middle-income countries: The case of Mexico (#6979)**

– Israel Osorio Rodarte, The World Bank

**3:23-3:33pm**  
(15:23-15:33) **Discussion**

**3:33-3:53pm**  
(15:33-15:53) **Modeling gender-based wage discrimination (#6970)**

– Hans Lofgren, Independent Researcher

**3:53-4:03pm**  
(15:53-16:03) **Discussion**

**4:03-4:33pm**  
(16:03-16:33) **Discussant**

– Martin Cicowiez, CEDLAS-Universidad Nacional de La Plata

**4:33-4:35pm**  
(16:33-16:35) **Session Closing**

**CANCELLED**



THURSDAY, JUNE 15

## Presentation Schedule

Presenters should arrive to their assigned session room 10 minutes prior to the start of the session with their presentation on a USB drive in both PowerPoint and PDF formats. Times listed within each session are targets and may vary slightly based on how the session is running.

**Looking for a paper?**

Search by ID# at: [www.gtap.org/events/conferences/2023/](http://www.gtap.org/events/conferences/2023/)

Time (CEST, UTC+2)	Event	Location
<b>2:30-4:35pm</b> (14:30-16:35)	<b>Organized Session 34</b>	<b>Rm 1K</b>

### ***“Assessment of Biodiversity Impacts using Agricultural and Economic Models”***

**Organized by:** **Uris Lantz Baldos**, Center for Global Trade Analysis, Purdue University  
**Alfredo Cisneros-Pineda**, Center for Global Trade Analysis, Purdue University

**Session Chair:** **Alfredo Cisneros-Pineda**, Center for Global Trade Analysis, Purdue University

<b>2:30-2:33pm</b> (14:30-14:33)	<b>Session Introduction</b>	
<b>2:33-2:53pm</b> (14:33-14:53)	<b><u>Global consumption patterns fuel trade-driven land-use change and biodiversity losses</u></b> (#6847) – <b>Alfredo Cisneros-Pineda</b> , Center for Global Trade Analysis, Purdue University	
<b>2:53-3:03pm</b> (14:53-15:03)	<b>Discussion</b>	
<b>3:03-3:23pm</b> (15:03-15:23)	<b><u>A Computable General Equilibrium Modelling Approach to Assess Biodiversity Effects in Highly Detailed Global Long-Run Analysis</u></b> (#7013) – <b>Theresa Goebel</b> , Institute for Food and Resource Economics, University of Bonn	
<b>3:23-3:33pm</b> (15:23-15:33)	<b>Discussion</b>	
<b>3:33-3:53pm</b> (15:33-15:53)	<b><u>Exploring the role of agricultural trade in the future of nature and people</u></b> (#7000) – <b>Amanda Palazzo</b> , International Institute for Applied Systems Analysis	
<b>3:53-4:03pm</b> (15:53-16:03)	<b>Discussion</b>	
<b>4:03-4:23pm</b> (16:03-16:23)	<b><u>The meso scale as a frontier in interdisciplinary modeling of sustainability from local to global scales</u></b> (#6929) – <b>Justin Johnson</b> , University of Minnesota	
<b>4:23-4:33pm</b> (16:23-16:33)	<b>Discussion</b>	
<b>4:33-4:35pm</b> (16:33-16:35)	<b>Session Closing</b>	

THURSDAY, JUNE 15

## Presentation Schedule

Presenters should arrive to their assigned session room 10 minutes prior to the start of the session with their presentation on a USB drive in both PowerPoint and PDF formats. Times listed within each session are targets and may vary slightly based on how the session is running.

**Looking for a paper?**

Search by ID# at: [www.gtap.org/events/conferences/2023/](http://www.gtap.org/events/conferences/2023/)

Time (CEST, UTC+2)	Event	Location
<b>2:30-4:35pm</b> (14:30-16:35)	<b>Organized Session 35</b>	<b>Rm 1L</b>

***“AfCFTA and economic transformation in Africa”***

**Organized by:** Mustapha Sadni Jallab, WTO

**Session Chair:** Mustapha Sadni Jallab, WTO

**2:30-2:33pm**  
(14:30-14:33)

**Session Introduction**

**2:33-2:53pm**  
(14:33-14:53)

**Demystifying the Effects of AfCFTA: A General Equilibrium Approach** (#6919)

– **Chahir Zaki**, Cairo University and ERF

**2:53-3:03pm**  
(14:53-15:03)

**Discussion**

**3:03-3:23pm**  
(15:03-15:23)

**Export Sophistication Effects of Trade Facilitation Reform in Sub-Saharan Africa** (#6801)

– **Moukaila Mouzamilou Takpara**, Pan African University-African Union Commission

**3:23-3:33pm**  
(15:23-15:33)

**Discussion**

**3:33-3:53pm**  
(15:33-15:53)

**Targeting untapped intra-regional trade opportunities for trade integration in Africa** (#6809)

– **Lorraine Ferreira**, North-West University

**3:53-4:03pm**  
(15:53-16:03)

**Discussion**

**4:03-4:33pm**  
(16:03-16:33)

**Discussant**

– **Simon Mevel**, United Nations Economic Commission for Africa

**4:33-4:35pm**  
(16:33-16:35)

**Session Closing**

**CANCELLED**



**CANCELLED**



THURSDAY, JUNE 15

## Presentation Schedule

Presenters should arrive to their assigned session room 10 minutes prior to the start of the session with their presentation on a USB drive in both PowerPoint and PDF formats. Times listed within each session are targets and may vary slightly based on how the session is running.

**Looking for a paper?**

Search by ID# at: [www.gtap.org/events/conferences/2023/](http://www.gtap.org/events/conferences/2023/)

Time (CEST, UTC+2)	Event	Location
<b>2:30-4:35pm</b> (14:30-16:35)	<b>Session 36</b>	<b>Rm 2B</b>

**“Land Use”**

**Session Chair:** Niven Winchester, Auckland University of Technology

<b>2:30-2:33pm</b> (14:30-14:33)	<b>Session Introduction</b>
<b>2:33-2:53pm</b> (14:33-14:53)	<b><u>Logs or Permits? Forestry Land Use Decisions in an Emissions Trading Scheme</u></b> (#6807) – <b>Dominic White</b> , Auckland University of Technology <i>*Wallace E. Tyner Travel Funding Award Recipient</i>
<b>2:53-3:03pm</b> (14:53-15:03)	<b>Discussion</b>
<b>3:03-3:23pm</b> (15:03-15:23)	<b><u>Land-based carbon dioxide removal technologies under climate stabilization scenarios: implications and trade-offs</u></b> (#6889) – <b>Angelo Gurgel</b> , Massachusetts Institute of Technology
<b>3:23-3:33pm</b> (15:23-15:33)	<b>Discussion</b>
<b>3:33-3:53pm</b> (15:33-15:53)	<b><u>Potential carbon leakage risk in agriculture under future EU-ETS scenarios</u></b> (#6864) – <b>Julio G. Fournier Gabela</b> , Thuenen Institute
<b>3:53-4:03pm</b> (15:53-16:03)	<b>Discussion</b>
<b>4:03-4:23pm</b> (16:03-16:23)	<b><u>Carbon leakage resulting from afforestation in the UK</u></b> (#6890) – <b>Alla Golub</b> , Center for Global Trade Analysis, Purdue University
<b>4:23-4:33pm</b> (16:23-16:33)	<b>Discussion</b>
<b>4:33-4:35pm</b> (16:33-16:35)	<b>Session Closing</b>

THURSDAY, JUNE 15

## Presentation Schedule

Presenters should arrive to their assigned session room 10 minutes prior to the start of the session with their presentation on a USB drive in both PowerPoint and PDF formats. Times listed within each session are targets and may vary slightly based on how the session is running.

**Looking for a paper?**

Search by ID# at: [www.gtap.org/events/conferences/2023/](http://www.gtap.org/events/conferences/2023/)

Time (CEST, UTC+2)	Event	Location
<b>2:30-4:35pm</b> (14:30-16:35)	<b>Session 37</b>	<b>Rm 3B</b>

**“Non-Tariff Barriers”**

**Session Chair:** **Janine Pelikan**, Thünen Institute of Market Analysis

**2:30-2:33pm**  
(14:30-14:33)

**Session Introduction**

**2:33-2:53pm**  
(14:33-14:53)

**Trading Borders: the importance of interregional integration and size of economies for the impact of secession** (#6835)

– **Gioele Figus**, University of Strathclyde

**2:53-3:03pm**  
(14:53-15:03)

**Discussion**

**3:03-3:23pm**  
(15:03-15:23)

**Adding mirror clauses within the European Green Deal: Hype or hope?** (#6859)

– **Alan Matthews**, Trinity College Dublin, Ireland

**3:23-3:33pm**  
(15:23-15:33)

**Discussion**

**3:33-3:53pm**  
(15:33-15:53)

**Economic consequences of cabotage restrictions: The effect of the Jones Act on Puerto Rico** (#6854)

– **Russell Hillberry**, Department of Agricultural Economics, Purdue University

**3:53-4:03pm**  
(15:53-16:03)

**Discussion**

**4:03-4:23pm**  
(16:03-16:23)

**Extending the GTAP-HS Model to Cover Production Quotas in Disaggregated Fishery Sector** (#6961)

– **Byeong-ho Lim**, Korea Maritime Institute

**4:23-4:33pm**  
(16:23-16:33)

**Discussion**

**4:33-4:35pm**  
(16:33-16:35)

**Session Closing**

**CANCELLED**



THURSDAY, JUNE 15

## Presentation Schedule

Presenters should arrive to their assigned session room 10 minutes prior to the start of the session with their presentation on a USB drive in both PowerPoint and PDF formats. Times listed within each session are targets and may vary slightly based on how the session is running.

**Looking for a paper?**

Search by ID# at: [www.gtap.org/events/conferences/2023/](http://www.gtap.org/events/conferences/2023/)

Time (CEST, UTC+2)	Event	Location
4:35-5:05pm (16:35-17:05)	Coffee Break	Main Hall/RE/RG

5:05-6:40pm (17:05-18:40)	Organized Session 38	Amphi Duguit
------------------------------	----------------------	--------------

### ***“Shared Socio-Economic Pathways (SSPs): The past, the future and diagnostics”***

**Organized by:** Dominique van der Mensbrugghe, Center for Global Trade Analysis, Purdue University

**Session Chair:** Dominique van der Mensbrugghe, Center for Global Trade Analysis, Purdue University

5:05-5:08pm (17:05-17:08)	Session Introduction	
5:08-5:28pm (17:08-17:28)	<b><u>The SSP-RCP scenario framework: progress, needs, and next steps – Insights from the Scenarios Forum 2022</u></b> (#6994)	– Bas Van Ruijven, International Institute for Applied Systems Analysis
5:28-5:38pm (17:28-17:38)	Discussion	
5:38-5:58pm (17:38-17:58)	<b><u>Updating the economic drivers in the SSPs: Integrating observed history with original storylines</u></b> (#6975)	– Rob Dellink, OECD
5:58-6:08pm (17:58-18:08)	Discussion	
6:08-6:28pm (18:08-18:28)	<b><u>Quantifying model fingerprints by means of cross-model diagnostics</u></b> (#6838)	– Mark Dekker, PBL Netherlands Environmental Assessment Agency
6:28-6:38pm (18:28-18:38)	Discussion	
6:38-6:40pm (18:38-18:40)	Session Closing	

THURSDAY, JUNE 15

## Presentation Schedule

Presenters should arrive to their assigned session room 10 minutes prior to the start of the session with their presentation on a USB drive in both PowerPoint and PDF formats. Times listed within each session are targets and may vary slightly based on how the session is running.

**Looking for a paper?**

Search by ID# at: [www.gtap.org/events/conferences/2023/](http://www.gtap.org/events/conferences/2023/)

Time (CEST, UTC+2)	Event	Location
<b>5:05-6:40pm</b> (17:05-18:40)	<b>Session 39</b>	<b>Rm 1J</b>

**“Land Use”**

**Session Chair:** **Gabriele Standardi**, CMCC - Euro-Mediterranean Center on Climate Change

<b>5:05-5:08pm</b> (17:05-17:08)	<b>Session Introduction</b>
<b>5:08-5:28pm</b> (17:08-17:28)	<b><u>Economic Impacts of Climate Change-Driven Crop Yields and Shifting Land-Use</u></b> (#6846) – <b>Jayson Beckman</b> , Economic Research Service of the United States Department of Agriculture (ERS)
<b>5:28-5:38pm</b> (17:28-17:38)	<b>Discussion</b>
<b>5:38-5:58pm</b> (17:38-17:58)	<b><u>Hindcasting the last decade: calibrating a novel, recursive dynamic land-use explicit CGE model</u></b> (#6877) – <b>Matthew Cantele</b> , University of Melbourne
<b>5:58-6:08pm</b> (17:58-18:08)	<b>Discussion</b>
<b>6:08-6:28pm</b> (18:08-18:28)	<b><u>Macro-economic, socio-economic, environmental and health trade-offs in different diet scenarios in Bangladesh using a CGE modelling approach</u></b> (#6977) – <b>Thijs De Lange</b> , Wageningen Economic Research (part of Wageningen University and Research)
<b>6:28-6:38pm</b> (18:28-18:38)	<b>Discussion</b>
<b>6:38-6:40pm</b> (18:38-18:40)	<b>Session Closing</b>



THURSDAY, JUNE 15

## Presentation Schedule

Presenters should arrive to their assigned session room 10 minutes prior to the start of the session with their presentation on a USB drive in both PowerPoint and PDF formats. Times listed within each session are targets and may vary slightly based on how the session is running.

**Looking for a paper?**

Search by ID# at: [www.gtap.org/events/conferences/2023/](http://www.gtap.org/events/conferences/2023/)

Time (CEST, UTC+2)	Event	Location
<b>5:05-6:40pm</b> (17:05-18:40)	<b>Session 40</b>	<b>Rm 1K</b>

**“African Continental Free Trade Area (AfCFTA)”**

**Session Chair:** Leysa Maty Sall, CEPII

**5:05-5:08pm**  
(17:05-17:08) **Session Introduction**

**5:08-5:28pm**  
(17:08-17:28) **An integrated framework to analyse the impacts of the African Free Trade Agreement (AfCFTA) – from continent to households analysis (#6860)**  
– Emanuele Ferrari, European Commission - Joint Research Centre

**5:28-5:38pm**  
(17:28-17:38) **Discussion**

**5:38-5:58pm**  
(17:38-17:58) **Comparative Assessment of the Potential Impact of joining WTO and Africa Continental Free Trade Area (AfCFTA) on the Ethiopia economy (#6966)**  
– Abay Zeleke, GRIPS

**5:58-6:08pm**  
(17:58-18:08) **Discussion**

**6:08-6:28pm**  
(18:08-18:28) **A Computational Framework to Select Sensitive Products at HS Level: Tariff Line: Implications for the African Continental Free Trade Area (#6803)**  
– Omid Zamani, Thuenen Institute

**6:28-6:38pm**  
(18:28-18:38) **Discussion**

**6:38-6:40pm**  
(18:38-18:40) **Session Closing**

THURSDAY, JUNE 15

## Presentation Schedule

Presenters should arrive to their assigned session room 10 minutes prior to the start of the session with their presentation on a USB drive in both PowerPoint and PDF formats. Times listed within each session are targets and may vary slightly based on how the session is running.

**Looking for a paper?**

Search by ID# at: [www.gtap.org/events/conferences/2023/](http://www.gtap.org/events/conferences/2023/)

Time (CEST, UTC+2)	Event	Location
<b>5:05-6:40pm</b> (17:05-18:40)	<b>Session 41</b>	<b>Rm 1L</b>

***“Industry-specific Economic Effects”***

**Session Chair:** Mary Burfisher, Center for Global Trade Analysis, Purdue University

**5:05-5:08pm**  
(17:05-17:08)

**Session Introduction**

**5:08-5:28pm**  
(17:08-17:28)

**Access to Environment Goods and Services in Botswana: A focus on Tourism, Energy, and Water** (#6909)  
– Aleksandar Stojanov, World Bank

**5:28-5:38pm**  
(17:28-17:38)

**Discussion**

**5:38-5:58pm**  
(17:38-17:58)

**Dutch disease in a new era: a tale of renewable resource dependence and tourism in Bhutan** (#6952)  
– Lindsay Shutes, Freelance

**5:58-6:08pm**  
(17:58-18:08)

**Discussion**

**6:08-6:28pm**  
(18:08-18:28)

**Industry, employment, distributional and macro-economic effects in the Nordic countries of their greenhouse policies** (#6885)  
– Maureen Rimmer, Centre of Policy Studies

**6:28-6:38pm**  
(18:28-18:38)

**Discussion**

**6:38-6:40pm**  
(18:38-18:40)

**Session Closing**

THURSDAY, JUNE 15

## Presentation Schedule

Presenters should arrive to their assigned session room 10 minutes prior to the start of the session with their presentation on a USB drive in both PowerPoint and PDF formats. Times listed within each session are targets and may vary slightly based on how the session is running.

**Looking for a paper?**

Search by ID# at: [www.gtap.org/events/conferences/2023/](http://www.gtap.org/events/conferences/2023/)

Time (CEST, UTC+2)	Event	Location
<b>5:05-6:40pm</b> (17:05-18:40)	<b>Session 42</b>	<b>Rm 2B</b>

**“Fossil Fuels and Emissions”**

**Session Chair:** Farzad Taheripour, Department of Agricultural Economics, Purdue University

**5:05-5:08pm**  
(17:05-17:08) **Session Introduction**

**5:08-5:28pm**  
(17:08-17:28) **Interactions between on liquid fossil fuel subsidies and global biofuels mandates** (#6880)  
– **Robin Argueyrolles**, University of Basel

**5:28-5:38pm**  
(17:28-17:38) **Discussion**

**5:38-5:58pm**  
(17:38-17:58) **Carbon Bias of Tariffs: Are Fossil Fuels the Culprits?** (#6887)  
– **Youssef Salib**, PSE

**5:58-6:08pm**  
(17:58-18:08) **Discussion**

**6:08-6:28pm**  
(18:08-18:28) **How gains from emissions trading can turn into gains for climate** (#6932)  
– **Laura Schuerer**, University of Oldenburg  
*\*Alex Meeraus / Thomas Rutherford Travel Funding Award Recipient*

**6:28-6:38pm**  
(18:28-18:38) **Discussion**

**6:38-6:40pm**  
(18:38-18:40) **Session Closing**

THURSDAY, JUNE 15

## Presentation Schedule

Presenters should arrive to their assigned session room 10 minutes prior to the start of the session with their presentation on a USB drive in both PowerPoint and PDF formats. Times listed within each session are targets and may vary slightly based on how the session is running.

**Looking for a paper?**

Search by ID# at: [www.gtap.org/events/conferences/2023/](http://www.gtap.org/events/conferences/2023/)

Time (CEST, UTC+2)	Event	Location
<b>5:05-6:10pm</b> (17:05-18:10)	<b>Session 43</b> <b>SESSION CANCELLED</b>	<b>Rm 3B</b>

***“Economic Transitions”***

**Session Chair:** **Sigit Perdana**, Ecole Polytechnique Federale de Lausanne (Swiss Federal Institute of Technology, Lausanne)

<b>5:05-5:08pm</b> (17:05-17:08)	<b>Session Introduction</b>
<b>5:08-5:28pm</b> (17:08-17:28)	<b><u>Decomposing Chinas Economic Growth from 2012 to 2019 - An Applied CGE Analysis</u></b> (#6863) – <b>Xiujian Peng</b> , Centre of Policy Studies, Victoria University
<b>5:28-5:38pm</b> (17:28-17:38)	<b>Discussion</b>
<b>5:38-5:58pm</b> (17:38-17:58)	<b><u>Analysis of the economic impact of decoupling between China and the United States</u></b> (#6856) – <b>Shantong Li</b> , Development Research Center of the State Council
<b>5:58-6:08pm</b> (17:58-18:08)	<b>Discussion</b>
<b>6:08-6:10pm</b> (18:08-18:10)	<b>Session Closing</b>

CANCELLED



CANCELLED



**THURSDAY, JUNE 15**

**Presentation Schedule**

Presenters should arrive to their assigned session room 10 minutes prior to the start of the session with their presentation on a USB drive in both PowerPoint and PDF formats. Times listed within each session are targets and may vary slightly based on how the session is running.



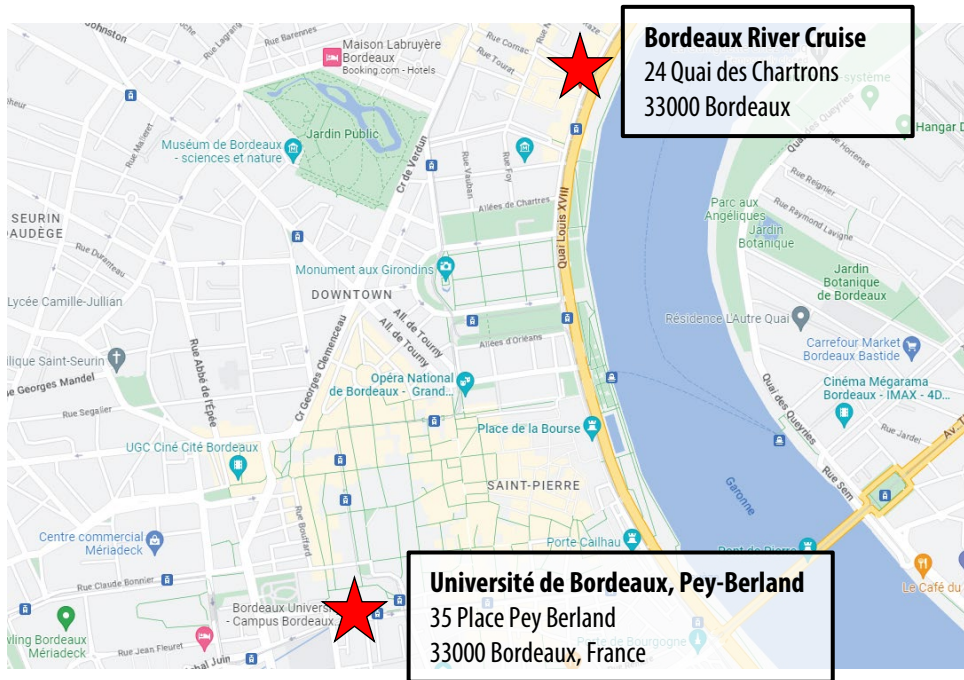
**Looking for a paper?**

Search by ID# at: [www.gtap.org/events/conferences/2023/](http://www.gtap.org/events/conferences/2023/)

Time (CEST, UTC+2)	Event	Location
<b>8:00-11:00pm</b> (20:00-23:00)	<b>Bordeaux River Dinner Cruise</b>	

Boarding at pontoon Bordeaux River Cruise, in front of 24 Quai des Chartrons, 33000 Bordeaux

- 8:00pm Boarding and departure for 2hr cruise along the 'Port de La Lune' and UNESCO facades
- 10:30pm Return to dock
- 11:00pm Disembarkation



FRIDAY, JUNE 16

Distinguished Plenary Speaker

*“Understanding of Trade”*



**Stefanie Stantcheva**

Nathaniel Ropes Professor of Political Economy, Harvard University

<https://scholar.harvard.edu/stantcheva/home>

Stefanie Stantcheva is the Nathaniel Ropes Professor of Political Economy at Harvard and founder of the Social Economics Lab (<https://socialeconomicslab.org/>).

She studies the taxation of firms and individuals, as well as how people understand, perceive, and form their attitudes towards public policies. Her work has centered around the long-lasting effects of tax policy – on innovation, education, and wealth. Recently, she has studied how R&D policies can be improved to foster innovation, how income and corporate taxes have shaped innovation over the 20<sup>th</sup> century, and how student loans can be structured to improve access to education. Stantcheva has also explored people’s attitudes towards taxation, health care, immigration policies, environmental policies, and social mobility using large-scale Social Economics Surveys and Experiments.

Stefanie Stantcheva received her Ph.D. in Economics from MIT in 2014 and was a junior fellow at the Harvard Society of Fellows 2014-2016 before joining the Harvard Department of Economics in July 2016. She is currently co-editor of the Quarterly Journal of Economics.

**FRIDAY, JUNE 16****Session Overview**

Session details for this day are listed on pages 64-83. You can also access the conference schedule through the **Whova** mobile app (see page 4).

CEST (UTC+2)	Amphi Duguit	Rm 1J	Rm 1K	Rm 1L	Rm 2B	Rm 3B	Rm 2I
<b>9:00-11:05am</b>	<b>*Session #44</b>  <i>Availability and Sustainability of Power-to-Liquid Fuels for Aviation</i>  Pg. 64	<b>*Session #45</b>  <i>Evaluating the impact of modern trade policies</i>  Pg. 65	<b>Session #46</b>  <i>Agricultural Land Use and Water: Africa</i>  Pg. 66	<b>Session #47</b>  <i>Climate Change Policy</i>  Pg. 67	<b>Session #48</b>  <i>Food Prices and Security</i>  Pg. 68	<b>Session #49</b>  <i>Carbon Border Adjustment Mechanisms</i>  Pg. 69	<b>Session #50</b>  <i>Agri-Food Systems</i>  Pg. 70
<b>11:35am-1:10pm</b> (11:35-13:10)	<b>*Session #51</b>  <i>Carbon pricing, carbon border adjustment, &amp; decarbonization</i>  Pg. 71	<b>*Session #52</b>  <i>Crisis Response: Lessons learned from the Ukraine crisis &amp; implications for the future</i>  Pg. 72	<b>Session #53</b>  <i>Climate Modeling</i>  Pg. 73	<b>Session #54</b>  <i>Calibration/Parameter Estimation and Advances in Quantitative Methods</i>  Pg. 74	<b>Session #55</b>  <i>Environmental Policies</i>  Pg. 75	<b>Session #56</b>  <i>African Trade and Trade Preferences</i>  Pg. 76	
<b>2:30-4:05pm</b> (14:30-16:05)	<b>*Session #57</b>  <i>The impact of disaggregated (trade) data in MRIOs</i>  Pg. 77	<b>Session #58</b>  <i>Baseline Development: Climate and Bioenergy</i>  Pg. 78	<b>Session #59</b>  <i>Dynamic Modelling</i>  Pg. 79	<b>Session #60</b>  <i>Trade and the Environment</i>  Pg. 80	<b>Session #61</b>  <i>Environmental Policies: Brazil and Colombia</i>  Pg. 81	<b>Session #62</b>  <i>Contributed Paper Session</i>  Pg. 82	
<b>4:35-6:00pm</b> (16:35-18:00)	<b>Plenary Session and Closing Remarks</b>  <i>Understanding of Trade</i>  Pg. 83						

CEST Central European Summer Time

\*Organized Session

FRIDAY, JUNE 16

## Presentation Schedule

Presenters should arrive to their assigned session room 10 minutes prior to the start of the session with their presentation on a USB drive in both PowerPoint and PDF formats. Times listed within each session are targets and may vary slightly based on how the session is running.

**Looking for a paper?**

Search by ID# at: [www.gtap.org/events/conferences/2023/](http://www.gtap.org/events/conferences/2023/)

Time (CEST, UTC+2)	Event	Location
8:00am-1:00pm (8:00-13:00)	Onsite Check-in	Main Hall

9:00-11:05am	Organized Session 44	Amphi Duguit
--------------	----------------------	--------------

### ***“Availability and Sustainability of Power-to-Liquid Fuels for Aviation”***

**Organized by:** Farzad Taheripour, Department of Agricultural Economics, Purdue University

**Session Chair:** Maksym Chepeliev, Center for Global Trade Analysis, Purdue University

9:00-9:03am	Session Introduction
9:03-9:23am	<u>Assessing a global system for supplying Power-to-Liquid fuels to the aviation sector</u> (#6964) – Florian Allroggen, Massachusetts Institute of Technology
9:23-9:33am	Discussion
9:33-9:53am	<u>Lifecycle emissions of Power-to-Liquid fuels in the context of intermittent energy supply</u> (#6939) – Niamh Keogh, Massachusetts Institute of Technology
9:53-10:03am	Discussion
10:03-10:23am	<u>Land use change implications of Power-to-Liquid Fuels</u> (#7022) – Farzad Taheripour, Department of Agricultural Economics, Purdue University
10:23-10:33am	Discussion
10:33-10:53am	<u>Sustainability Challenges and Opportunities of Power-to-Liquid Fuels Authors and their affiliations</u> (#6946) – Robert Malina, Hasselt University and MIT
10:53-11:03am	Discussion
11:03-11:05am	Session Closing

CANCELLED





FRIDAY, JUNE 16

## Presentation Schedule

Presenters should arrive to their assigned session room 10 minutes prior to the start of the session with their presentation on a USB drive in both PowerPoint and PDF formats. Times listed within each session are targets and may vary slightly based on how the session is running.

**Looking for a paper?**

Search by ID# at: [www.gtap.org/events/conferences/2023/](http://www.gtap.org/events/conferences/2023/)

Time (CEST, UTC+2)	Event	Location
9:00-11:05am	Organized Session 45	Rm 1J

***“Evaluating the impact of modern trade policies”***

**Organized by:** Eddy Bekkers, World Trade Organization

**Session Chair:** Eddy Bekkers, World Trade Organization

9:00-9:03am	Session Introduction
9:03-9:23am	<b><u>Global trade policy reform and gender inequality in the labour market</u></b> (#6905) – Jeanne Metivier, WTO
9:23-9:33am	Discussion
9:33-9:53am	<b><u>Spillover effects of subsidies in the 21st century. The role of monopolistic, dynamic, central, and high-growth sectors</u></b> (#6928) – Kirti Jhunjunwala, World Trade Organization
9:53-10:03am	Discussion
10:03-10:23am	<b><u>The Trade Effects of a Potential Agreement on Services Domestic Regulation</u></b> (#6927) – Yu Roger So, Graduate Institute of International and Development Studies
10:23-10:33am	Discussion
10:33-10:53am	<b><u>Localising Data in a Globalised World</u></b> (#6949) – Eddy Bekkers, World Trade Organization
10:53-11:03am	Discussion
11:03-11:05am	Session Closing

FRIDAY, JUNE 16

## Presentation Schedule

Presenters should arrive to their assigned session room 10 minutes prior to the start of the session with their presentation on a USB drive in both PowerPoint and PDF formats. Times listed within each session are targets and may vary slightly based on how the session is running.

**Looking for a paper?**

Search by ID# at: [www.gtap.org/events/conferences/2023/](http://www.gtap.org/events/conferences/2023/)

Time (CEST, UTC+2)	Event	Location
9:00-11:05am	Session 46	Rm 1K

### ***“Agricultural Land Use and Water: Africa”***

**Session Chair:** Mustapha Sadni Jallab, WTO

9:00-9:03am	Session Introduction
9:03-9:23am	<b><u>Agri-Food System diagnostics and drivers of transformation in Sudan</u></b> (#6973) – <b>Khalid Siddig</b> , International Food Policy Research Institute
9:23-9:33am	Discussion
9:33-9:53am	<b><u>Towards a Living Income for Cocoa Farmers in Ghana: Income vs. Forest?</u></b> (#7003) – <b>Ole Boysen</b> , European Commission, Joint Research Centre (JRC)
9:53-10:03am	Discussion
10:03-10:23am	<b><u>Assessing impacts of irrigation expansion on Ethiopian households</u></b> (#6912) – <b>Simon Ehjeij</b> , University of Hohenheim
10:23-10:33am	Discussion
10:33-10:53am	<b><u>Irrigation policy and water efficiency in Egypt</u></b> (#7010) – <b>Abdelradi Mohammed</b> , University of Basel
10:53-11:03am	Discussion
11:03-11:05am	Session Closing

FRIDAY, JUNE 16

## Presentation Schedule

Presenters should arrive to their assigned session room 10 minutes prior to the start of the session with their presentation on a USB drive in both PowerPoint and PDF formats. Times listed within each session are targets and may vary slightly based on how the session is running.

**Looking for a paper?**

Search by ID# at: [www.gtap.org/events/conferences/2023/](http://www.gtap.org/events/conferences/2023/)

Time (CEST, UTC+2)	Event	Location
9:00-11:05am	Session 47	Rm 1L

**“Climate Change Policy”**

**Session Chair:** Matthias Weitzel, European Commission - Joint Research Centre

9:00-9:03am	Session Introduction
9:03-9:23am	<b><u>Capital Malleability and its Implications for Climate Policy Design</u></b> (#6960) – Thomas Rutherford, University of Wisconsin Madison
9:23-9:33am	Discussion
9:33-9:53am	<b><u>Direct and embodied energy and emissions trade in a decarbonised world</u></b> (#6945) – Jose Antonio Ordóñez, European Commission
9:53-10:03am	Discussion
10:03-10:23am	<b><u>Emission Mitigation in the Global Steel Industry: Representing CCS and Hydrogen Options in Integrated Assessment Modeling</u></b> (#6829) – Sergey Paltsev, MIT Joint Program on the Science and Policy of Global Change
10:23-10:33am	Discussion
10:33-10:53am	<b><u>Endogenous Technological Change Adapted to the CGE Framework</u></b> (#6833) – Jan Witajewski-Baltvilks, The World Bank
10:53-11:03am	Discussion
11:03-11:05am	Session Closing

FRIDAY, JUNE 16

## Presentation Schedule

Presenters should arrive to their assigned session room 10 minutes prior to the start of the session with their presentation on a USB drive in both PowerPoint and PDF formats. Times listed within each session are targets and may vary slightly based on how the session is running.

**Looking for a paper?**

Search by ID# at: [www.gtap.org/events/conferences/2023/](http://www.gtap.org/events/conferences/2023/)

Time (CEST, UTC+2)	Event	Location
9:00-11:05am	Session 48	Rm 2B

***“Food Prices and Security”***

**Session Chair:** Sebnem Sahin, BAU International

9:00-9:03am	Session Introduction
9:03-9:23am	<b><u>The Economic Impacts of Russia-Ukraine War Export Disruptions of Grain Commodities</u></b> (#7001) – Adam Rose, University of Southern California
9:23-9:33am	Discussion
9:33-9:53am	<b><u>The economywide effects of reducing food loss and waste in developing countries</u></b> (#6873) – Karl Pauw, International Food Policy Research Institute (IFPRI)
9:53-10:03am	Discussion
10:03-10:23am	<b><u>Reconstructing the 1816 year without summer to assess the resilience of today’s global food system: an interdisciplinary modelling approach</u></b> (#6978) – Kirsten Boysen-Urban, University of Hohenheim
10:23-10:33am	Discussion
10:33-10:53am	<b><u>Resilience of African food security – a CGE analysis of the Russia-Ukraine war</u></b> (#6933) – Antti Simola, European Commission - Joint Research Center
10:53-11:03am	Discussion
11:03-11:05am	Session Closing

FRIDAY, JUNE 16

## Presentation Schedule

Presenters should arrive to their assigned session room 10 minutes prior to the start of the session with their presentation on a USB drive in both PowerPoint and PDF formats. Times listed within each session are targets and may vary slightly based on how the session is running.



**Looking for a paper?**

Search by ID# at: [www.gtap.org/events/conferences/2023/](http://www.gtap.org/events/conferences/2023/)

Time (CEST, UTC+2)	Event	Location
9:00-11:05am	Session 49	Rm 3B

### ***“Carbon Border Adjustment Mechanisms”***

**Session Chair:** Lindsay Shutes, Freelance

9:00-9:03am Session Introduction

9:03-9:23am **Energy Efficiency of Carbon-dioxide Emission Nexus in the EU: Assessing the Effect of Carbon Border Adjustment Mechanism on Carbon-dioxide Emission Reduction Using the GTAP-E Model** (#6976)

– Geoffrey M. Kitetu, Division of International and Area Studies, Pukyong National University

9:23-9:33am Discussion

9:33-9:53am **Can a Carbon Border Adjustment Mechanism (CBAM) reduce negative social and environmental international spillovers from EU food consumption?** (#6865)

– Marijke Kuiper, Wageningen Economic Research

9:53-10:03am Discussion

10:03-10:23am **Exploring potential impacts of carbon border adjustment mechanisms and climate clubs in agriculture** (#6881)

– Wusheng Yu, Department of Food and Resource Economics, University of Copenhagen

10:23-10:33am Discussion

10:33-10:53am **Impact of a EU border carbon adjustment for the Global South** (#6921)

– Dorothee Flaig, University of Hohenheim

10:53-11:03am Discussion

11:03-11:05am Session Closing

CANCELLED



FRIDAY, JUNE 16

## Presentation Schedule

Presenters should arrive to their assigned session room 10 minutes prior to the start of the session with their presentation on a USB drive in both PowerPoint and PDF formats. Times listed within each session are targets and may vary slightly based on how the session is running.

**Looking for a paper?**

Search by ID# at: [www.gtap.org/events/conferences/2023/](http://www.gtap.org/events/conferences/2023/)

Time (CEST, UTC+2)	Event	Location
9:00-11:05am	Session 50	Rm 2I

**“Agri-Food Systems”**

**Session Chair:** Florian Freund, Thünen Institute of Market Analysis

9:00-9:03am	Session Introduction	
9:03-9:23am	<b><u>New European Union free trade agreements: estimating their effects on agri-food and sustainable development</u></b> (#6934) – Maria Cristina Mitaritonna, CEPII	
9:23-9:33am	Discussion	
9:33-9:53am	<b><u>NI-GTAP: An extension to the GTAP database to assess the impact of the Northern Ireland Protocol on NI agri-food sectors</u></b> (#6935) – Alastair Greig, AFBI	
9:53-10:03am	Discussion	
10:03-10:23am	<b><u>Unequal distributional impact of carbon tax on agri-food system --An empirical analysis based on a dynamic multi-regional CGE model in China</u></b> (#6963) – Qishi Zhang, Shanghaijiaotong University	
10:23-10:33am	Discussion	
10:33-10:53am	<b><u>A Comparison of CGE Versus Gravity-Based Agri-Food Trade Between the EU and Japan</u></b> (#6839) – Marvin Berndt, Dept. of Agricultural Markets 420b, University of Hohenheim	
10:53-11:03am	Discussion	
11:03-11:05am	Session Closing	
11:05-11:35am	Coffee Break	Main Hall/RE/RG

FRIDAY, JUNE 16

## Presentation Schedule

Presenters should arrive to their assigned session room 10 minutes prior to the start of the session with their presentation on a USB drive in both PowerPoint and PDF formats. Times listed within each session are targets and may vary slightly based on how the session is running.

**Looking for a paper?**

Search by ID# at: [www.gtap.org/events/conferences/2023/](http://www.gtap.org/events/conferences/2023/)

Time (CEST, UTC+2)	Event	Location
<b>11:35am-1:10pm</b> (11:35-13:10)	<b>Organized Session 51</b>	<b>Amphi Duguit</b>

***“Carbon pricing, carbon border adjustment, and decarbonization”***

**Organized by:** Eddy Bekkers, World Trade Organization

**Session Chair:** Maryla Maliszewska, The World Bank

**11:35-11:38am** Session Introduction

**11:38-11:58am** **A global framework for climate mitigation policies** (#6951)  
– Ayse Nihal Yilmaz, World Trade Organization

**11:58am-12:08pm** Discussion

**12:08-12:28pm** **The role of trade in decarbonizing the global economy** (#6956)  
– Enxhi Tresa, OECD

**12:28-12:38pm** Discussion

**12:38-12:58pm** **Rebating revenues from a unilateral emission price** (#6958)  
– Christoph Böhlinger, University of Oldenburg

**12:58-1:08pm** Discussion  
(12:58-13:08)

**1:08-1:10pm** Session Closing  
(13:08-13:10)

FRIDAY, JUNE 16

## Presentation Schedule

Presenters should arrive to their assigned session room 10 minutes prior to the start of the session with their presentation on a USB drive in both PowerPoint and PDF formats. Times listed within each session are targets and may vary slightly based on how the session is running.

**Looking for a paper?**

Search by ID# at: [www.gtap.org/events/conferences/2023/](http://www.gtap.org/events/conferences/2023/)

Time (CEST, UTC+2)	Event	Location
<b>11:35am-1:10pm</b> (11:35-13:10)	<b>Organized Session 52</b>	<b>Rm 1J</b>

## ***“Crisis Response: Lessons learned from the Ukraine crisis and implications for the future”***

**Organized by:** **Channing Arndt**, International Food Policy Research Institute / CGIAR  
**David Laborde**, FAO

**Session Chair:** **Channing Arndt**, International Food Policy Research Institute / CGIAR

**11:35-11:38am** **Session Introduction**

**11:38-11:58am** **The Russia-Ukraine war: Implications for global and regional food security and potential policy responses (#6827)**  
– **Kibrom Abay**, IFPRI

**11:58am-12:08pm** **Discussion**

**12:08-12:28pm** **The Ukraine War and Rising Commodity Prices: Implications for Developing Countries (#7023)**  
– **James Thurlow**, International Food Policy Research Institute (IFPRI)

**12:28-12:38pm** **Discussion**

**12:38-12:58pm** **The Ukraine War, Commodity Prices and Food Security: Critiques and ways forward (#6916)**  
– **Laurence Harris**, SOAS, University of London

**12:58-1:08pm** **Discussion**  
(12:58-13:08)

**1:08-1:10pm** **Session Closing**  
(13:08-13:10)



FRIDAY, JUNE 16

## Presentation Schedule

Presenters should arrive to their assigned session room 10 minutes prior to the start of the session with their presentation on a USB drive in both PowerPoint and PDF formats. Times listed within each session are targets and may vary slightly based on how the session is running.

**Looking for a paper?**

Search by ID# at: [www.gtap.org/events/conferences/2023/](http://www.gtap.org/events/conferences/2023/)

Time (CEST, UTC+2)	Event	Location
<b>11:35am-1:10pm</b> (11:35-13:10)	<b>Session 53</b>	<b>Rm 1K</b>

**“Climate Modeling”**

**Session Chair:** Ken Itakura, Nagoya City University

<b>11:35-11:38am</b>	<b>Session Introduction</b>
<b>11:38-11:58am</b>	<b><u>A Structural Transformation Integrated Assessment Model of Climate Change</u> (#7005)</b> – Johannes Koch, Potsdam Institute for Climate Impact Research
<b>11:58am-12:08pm</b>	<b>Discussion</b>
<b>12:08-12:28pm</b>	<b><u>Applying climate change damage functions to the sub-national regions in a global CGE model</u> (#6991)</b> – Ken Itakura, Nagoya City University
<b>12:28-12:38pm</b>	<b>Discussion</b>
<b>12:38-12:58pm</b>	<b><u>Evaluation of climate impacts using a global multiregional computable general equilibrium model combined with regional and sector specific damage functions</u> (#6985)</b> – Yong-Gun Kim, Korea Environment Institute
<b>12:58-1:08pm</b> (12:58-13:08)	<b>Discussion</b>
<b>1:08-1:10pm</b> (13:08-13:10)	<b>Session Closing</b>

FRIDAY, JUNE 16

## Presentation Schedule

Presenters should arrive to their assigned session room 10 minutes prior to the start of the session with their presentation on a USB drive in both PowerPoint and PDF formats. Times listed within each session are targets and may vary slightly based on how the session is running.

**Looking for a paper?**

Search by ID# at: [www.gtap.org/events/conferences/2023/](http://www.gtap.org/events/conferences/2023/)

Time (CEST, UTC+2)	Event	Location
11:35am-1:10pm (11:35-13:10)	Session 54	Rm 1L

### ***“Calibration/Parameter Estimation and Advances in Quantitative Methods”***

**Session Chair:** Anton Yang, Department of Economics, Yale University

11:35-11:38am Session Introduction

11:38-11:58am **Spatial Development and Mobility Frictions in Latin America: Theory-Based Empirical Evidence** (#6805)

– Elena Ianchovichina, The World Bank

11:58am-12:08pm Discussion

12:08-12:28pm **Projecting demand elasticities for disaggregated animal food products under alternative Shared Socioeconomic Pathways** (#6810)

– Clara Garcia Bouyssou, University of Copenhagen

12:28-12:38pm Discussion

12:38-12:58pm **SSP-consistent high-resolution maps of disposable income in Europe** (#6931)

– Mehdi Mikou, CIRED

12:58-1:08pm  
(12:58-13:08) Discussion

1:08-1:10pm  
(13:08-13:10) Session Closing

FRIDAY, JUNE 16

## Presentation Schedule

Presenters should arrive to their assigned session room 10 minutes prior to the start of the session with their presentation on a USB drive in both PowerPoint and PDF formats. Times listed within each session are targets and may vary slightly based on how the session is running.

**Looking for a paper?**

Search by ID# at: [www.gtap.org/events/conferences/2023/](http://www.gtap.org/events/conferences/2023/)

Time (CEST, UTC+2)	Event	Location
11:35am-1:10pm (11:35-13:10)	Session 55	Rm 2B

**“Environmental Policies”**

**Session Chair:** Dorothee Flaig, University of Hohenheim

11:35-11:38am	Session Introduction
11:38-11:58am	<b><u>Aligning value-added taxes on food with health and environmental considerations – two case studies for the UK and Germany</u></b> (#6924) – Marco Springmann, University of Oxford
11:58am-12:08pm	Discussion
12:08-12:28pm	<b><u>An economy-wide analysis of the circular economy potential in Germany – Enhancing product longevity and domestic recycling</u></b> (#7017) – Jonas Luckmann, Humboldt Universität zu Berlin
12:28-12:38pm	Discussion
12:38-12:58pm	<b><u>Uniform and differentiated environmental protection tax in China</u></b> (#6980) – Xiurong Hu, Nanjing University of Aeronautics and Astronautics
12:58-1:08pm (12:58-13:08)	Discussion
1:08-1:10pm (13:08-13:10)	Session Closing

FRIDAY, JUNE 16

## Presentation Schedule

Presenters should arrive to their assigned session room 10 minutes prior to the start of the session with their presentation on a USB drive in both PowerPoint and PDF formats. Times listed within each session are targets and may vary slightly based on how the session is running.

**Looking for a paper?**

Search by ID# at: [www.gtap.org/events/conferences/2023/](http://www.gtap.org/events/conferences/2023/)

Time (CEST, UTC+2)	Event	Location
<b>11:35am-1:10pm</b> (11:35-13:10)	<b>Session 56</b>	<b>Rm 3B</b>

***“African Trade and Trade Preferences”***

**Session Chair:** Caitlyn Carrico, United Nations Economic Commission for Africa

<b>11:35-11:38am</b>	<b>Session Introduction</b>	
<b>11:38-11:58am</b>	<b><u>Exports Duration in Africa: The Importance of Economic Integration Agreements</u> (#6944)</b> – Niango Sika Brice Adou, African Economic Research Consortium	
<b>11:58am-12:08pm</b>	<b>Discussion</b>	
<b>12:08-12:28pm</b>	<b><u>Ex-post assessment of Regional Trade Agreements (RTAs) effects in Africa</u> (#6989)</b> – Leysa Maty Sall, CEPII	
<b>12:28-12:38pm</b>	<b>Discussion</b>	
<b>12:38-12:58pm</b>	<b><u>Stay firm: Importer-exporter relations and the use of trade preferences</u> (#6914)</b> – Lars Nilsson, European Commission - DG Trade	
<b>12:58-1:08pm</b> (12:58-13:08)	<b>Discussion</b>	
<b>1:08-1:10pm</b> (13:08-13:10)	<b>Session Closing</b>	
<b>1:10-2:30pm</b> (13:10-14:30)	<b>Lunch</b>	<b>Main Hall/RE/RG</b>

FRIDAY, JUNE 16

## Presentation Schedule

Presenters should arrive to their assigned session room 10 minutes prior to the start of the session with their presentation on a USB drive in both PowerPoint and PDF formats. Times listed within each session are targets and may vary slightly based on how the session is running.

**Looking for a paper?**

Search by ID# at: [www.gtap.org/events/conferences/2023/](http://www.gtap.org/events/conferences/2023/)

Time (CEST, UTC+2)	Event	Location
<b>2:30-4:05pm</b> (14:30-16:05)	<b>Organized Session 57</b>	<b>Amphi Duguit</b>

***“The impact of disaggregated (trade) data in MRIOs”***

**Organized by:** **Zornitsa Kutlina-Dimitrova**, European Commission, Directorate-General for TRADE  
**Alessandro Antimiani**, European Commission, DG TRADE

**Session Chair:** **Lars Nilsson**, European Commission - DG Trade

**2:30-2:33pm**  
(14:30-14:33)

**Session Introduction**

**2:33-2:53pm**  
(14:33-14:53)

**From mirco to macro analysis: critical raw materials in CETA** (#6852)

– **Zornitsa Kutlina-Dimitrova**, European Commission, Directorate-General for TRADE

**2:53-3:03pm**  
(14:53-15:03)

**Discussion**

**3:03-3:23pm**  
(15:03-15:23)

**Micro-based indicators of GVC participation and positioning** (#6870)

– **Ilaria Fusacchia**, University of Roma Tre

**3:23-3:33pm**  
(15:23-15:33)

**Discussion**

**3:33-3:53pm**  
(15:33-15:53)

**Refining Savings in the GTAP Data Base** (#6998)

– **Angel Aguiar**, Center for Global Trade Analysis, Purdue University

**3:53-4:03pm**  
(15:53-16:03)

**Discussion**

**4:03-4:05pm**  
(16:03-16:05)

**Session Closing**

FRIDAY, JUNE 16

## Presentation Schedule

Presenters should arrive to their assigned session room 10 minutes prior to the start of the session with their presentation on a USB drive in both PowerPoint and PDF formats. Times listed within each session are targets and may vary slightly based on how the session is running.

**Looking for a paper?**

Search by ID# at: [www.gtap.org/events/conferences/2023/](http://www.gtap.org/events/conferences/2023/)

Time (CEST, UTC+2)	Event	Location
<b>2:30-4:05pm</b> (14:30-16:05)	<b>Session 58</b>	<b>Rm 1J</b>

***“Baseline Development: Climate and Bioenergy”***

**Session Chair:** **Francesco Clora**, Department of Food and Resource Economics, University of Copenhagen

**2:30-2:33pm**  
(14:30-14:33)

**Session Introduction**

**2:33-2:53pm**  
(14:33-14:53)

**Differentiated Carbon Pricing to 2050: Insights from KPMG-IAM** (#6832)  
– **Laurent Cretegnny**, KPMG International Services Limited

**2:53-3:03pm**  
(14:53-15:03)

**Discussion**

**3:03-3:23pm**  
(15:03-15:23)

**A dynamic Path to a Low Carbon Economy** (#6894)  
– **Lionel Fontagné**, Paris 1 University / Center for Prospective Studies and International Information

**3:23-3:33pm**  
(15:23-15:33)

**Discussion**

**3:33-3:53pm**  
(15:33-15:53)

**The effect of different model specifications on model outputs: The case of the CGE model "DART-BIO"** (#6925)  
– **Alena Schmidt**, University of Basel

**3:53-4:03pm**  
(15:53-16:03)

**Discussion**

**4:03-4:05pm**  
(16:03-16:05)

**Session Closing**

FRIDAY, JUNE 16

## Presentation Schedule

Presenters should arrive to their assigned session room 10 minutes prior to the start of the session with their presentation on a USB drive in both PowerPoint and PDF formats. Times listed within each session are targets and may vary slightly based on how the session is running.

**Looking for a paper?**

Search by ID# at: [www.gtap.org/events/conferences/2023/](http://www.gtap.org/events/conferences/2023/)

Time (CEST, UTC+2)	Event	Location
<b>2:30-4:05pm</b> (14:30-16:05)	<b>Session 59</b>	<b>Rm 1K</b>

**“Dynamic Modelling”**

**Session Chair:** Yingying Xu, International Trade Administration, Department of Commerce

**2:30-2:33pm**  
(14:30-14:33)

**Session Introduction**

**2:33-2:53pm**  
(14:33-14:53)

**Introducing foresight to the standard GTAP model: the implications of stockholding for expected and unexpected productivity shocks (#6831)**

– Maros Ivanic, ERS-USDA

**2:53-3:03pm**  
(14:53-15:03)

**Discussion**

**3:03-3:23pm**  
(15:03-15:23)

**Impact of Revival Policy for Public Sector Productivity (#6874)**

– Nyambaatar Batbayar, Economic Research Institute

*\*Alex Meeraus / Thomas Rutherford Travel Funding Award Recipient*

**3:23-3:33pm**  
(15:23-15:33)

**Discussion**

**3:33-3:53pm**  
(15:33-15:53)

**Using Trade Liberalisation to Compare Dynamic Baselines (#6942)**

– Teale Cunningham, UK Government

**3:53-4:03pm**  
(15:53-16:03)

**Discussion**

**4:03-4:05pm**  
(16:03-16:05)

**Session Closing**

FRIDAY, JUNE 16

## Presentation Schedule

Presenters should arrive to their assigned session room 10 minutes prior to the start of the session with their presentation on a USB drive in both PowerPoint and PDF formats. Times listed within each session are targets and may vary slightly based on how the session is running.

**Looking for a paper?**

Search by ID# at: [www.gtap.org/events/conferences/2023/](http://www.gtap.org/events/conferences/2023/)

Time (CEST, UTC+2)	Event	Location
<b>2:30-4:05pm</b> (14:30-16:05)	<b>Session 60</b>	<b>Rm 1L</b>

***“Trade and the Environment”***

**Session Chair:** Glyn Wittwer, Centre of Policy Studies

**2:30-2:33pm**  
(14:30-14:33)

**Session Introduction**

**2:33-2:53pm**  
(14:33-14:53)

**The economic impacts of a hypothetical foot and mouth disease outbreak in Australia (#6862)**  
– Glyn Wittwer, Centre of Policy Studies

**2:53-3:03pm**  
(14:53-15:03)

**Discussion**

**3:03-3:23pm**  
(15:03-15:23)

**Comparing the environmental bias of trade policies (#6842)**  
– Luca Salvatici, Università Roma Tre

**3:23-3:33pm**  
(15:23-15:33)

**Discussion**

**3:33-3:53pm**  
(15:33-15:53)

**How should governments respond to energy shocks? A horse-race approach (#6871)**  
– Geoffroy Duparc-Portier, University of Strathclyde

**3:53-4:03pm**  
(15:53-16:03)

**Discussion**

**4:03-4:05pm**  
(16:03-16:05)

**Session Closing**

**CANCELLED**





FRIDAY, JUNE 16

## Presentation Schedule

Presenters should arrive to their assigned session room 10 minutes prior to the start of the session with their presentation on a USB drive in both PowerPoint and PDF formats. Times listed within each session are targets and may vary slightly based on how the session is running.

**Looking for a paper?**

Search by ID# at: [www.gtap.org/events/conferences/2023/](http://www.gtap.org/events/conferences/2023/)

Time (CEST, UTC+2)	Event	Location
<b>2:30-4:05pm</b> (14:30-16:05)	<b>Session 61</b>	<b>Rm 2B</b>

***“Environmental Policies: Brazil and Colombia”***

**Session Chair:** Rafael Garaffa, European Commission - JRC Seville

**2:30-2:33pm**  
(14:30-14:33)

**Session Introduction**

**2:33-2:53pm**  
(14:33-14:53)

**Impacts of Economic Growth with Forest Preservation in the Amazon and Cerrado Biomes in Brazil** (#7015)

– Gessica Souza, UFMG / CEDEPLAR

**2:53-3:03pm**  
(14:53-15:03)

**Discussion**

**3:03-3:23pm**  
(15:03-15:23)

**The EU Carbon Adjustment : Implication on Brazilian Economy** (#6843)

– Sigit Perdana, Ecole Polytechnique Federale de Lausanne (Swiss Federal Institute of Technology, Lausanne)

**3:23-3:33pm**  
(15:23-15:33)

**Discussion**

**3:33-3:53pm**  
(15:33-15:53)

**Economic Impacts of Environmental Policies and Electricity Generation : A Case Study of Colombia** (#6983)

– Marcos Gonzalez-Auhing, Universidad EAFIT

**3:53-4:03pm**  
(15:53-16:03)

**Discussion**

**4:03-4:05pm**  
(16:03-16:05)

**Session Closing**

FRIDAY, JUNE 16

## Presentation Schedule

Presenters should arrive to their assigned session room 10 minutes prior to the start of the session with their presentation on a USB drive in both PowerPoint and PDF formats. Times listed within each session are targets and may vary slightly based on how the session is running.

**Looking for a paper?**

Search by ID# at: [www.gtap.org/events/conferences/2023/](http://www.gtap.org/events/conferences/2023/)

Time (CEST, UTC+2)	Event	Location
<b>2:30-3:35pm</b> (14:30-15:35)	<b>Session 62</b>	<b>Rm 3B</b>

**“GVCs and Health Spending Impacts: Africa”**

**Session Chair:** **Khalid Siddig**, International Food Policy Research Institute

**2:30-2:33pm**  
(14:30-14:33)

**Session Introduction**

**2:33-2:53pm**  
(14:33-14:53)

**Global value chains and digitalization under industry 4.0: The Hansen threshold regression model in the case of Africa (#6824)**  
– **Feriel Nasser**, ESSECT-Tunisia

**2:53-3:03pm**  
(14:53-15:03)

**Discussion**

**3:03-3:23pm**  
(15:03-15:23)

**Socioeconomic impacts of Public Health Spending and social programs (2021-2025) in Morocco: a recursive dynamic computable general equilibrium analysis (#6910)**  
– **Nabil El Baouchari**, Mohammed V University in Rabat

**3:23-3:33pm**  
(15:23-15:33)

**Discussion**

**3:33-3:35pm**  
(15:33-15:35)

**Session Closing**

<b>4:05-4:35pm</b> (16:05-16:35)	<b>Coffee Break</b>	<b>Main Hall/RE/RG</b>
-------------------------------------	---------------------	------------------------

CANCELLED



FRIDAY, JUNE 16

## Presentation Schedule

Presenters should arrive to their assigned session room 10 minutes prior to the start of the session with their presentation on a USB drive in both PowerPoint and PDF formats. Times listed within each session are targets and may vary slightly based on how the session is running.

**Looking for a paper?**

Search by ID# at: [www.gtap.org/events/conferences/2023/](http://www.gtap.org/events/conferences/2023/)

Time (CEST, UTC+2)	Event	Location
<b>4:35-6:00pm</b> (16:35-18:00)	<b>Plenary Session and Closing Remarks</b>	<b>Amphi Duguit</b>

***“Understanding of Trade”***

**Session Chair:** **Amanda M. Countryman**, Colorado State University

**4:35-4:40pm**  
(16:35-16:40) **Session Introduction**

**4:40-5:10pm**  
(16:40-17:10) **Understanding of Trade**  
— **Stefanie Stantcheva**, Harvard University

**5:10-5:30pm**  
(17:10-17:30) **Discussion**

**5:30-5:35pm**  
(17:30-17:35) **Session Closing**

**5:35-5:40pm**  
(17:35-17:40) **2024 Conference Preview**  
— **Amanda Countryman**, Colorado State University

**5:40-6:00pm**  
(17:40-18:00) **Closing Remarks**  
— **Dominique van der Mensbrugge**, Center for Global Trade Analysis, Purdue University

27<sup>th</sup> Annual Conference on Global Economic Analysis



# Colorado State University

Fort Collins, Colorado, USA

June 5-7, 2024



**Global Trade Analysis Project**

Center for Global Trade Analysis  
Department of Agricultural Economics  
Purdue University



**AGRICULTURAL AND  
RESOURCE ECONOMICS  
COLORADO STATE UNIVERSITY**

### Important Dates/Deadlines

Submissions	November 2023 – January 15, 2024
Abstract Review	mid-January – mid-February 2024
Status Notifications	late February / early March 2024
Paper Submission	April 15, 2024

### Contact

Ginger Batta ([gbatta@purdue.edu](mailto:gbatta@purdue.edu))  
Lead Program Manager, Center for Global Trade Analysis  
Department of Agricultural Economics, Purdue University

**SATURDAY, JUNE 17**

**Post-Conference Event**

**General Information**

Those who registered and paid to participate in this event will enjoy a day-trip to Saint-Émilion to experience a guided tour of the village including its rich historical streets, cloisters, city gate, fortifications, and monuments. Following this tour, participants will visit Château Haut Sarpe, which is one of the oldest and most renowned châteaux in Saint-Émilion. Guests will visit the estate, cellars, and discover the picturesque hamlet of Haut Sarpe. The visit will end with an aperitif and “Winegrower’s buffet” featuring local meats, cheeses, fruits, and of course, a sampling of local champagne and wine from the estate.

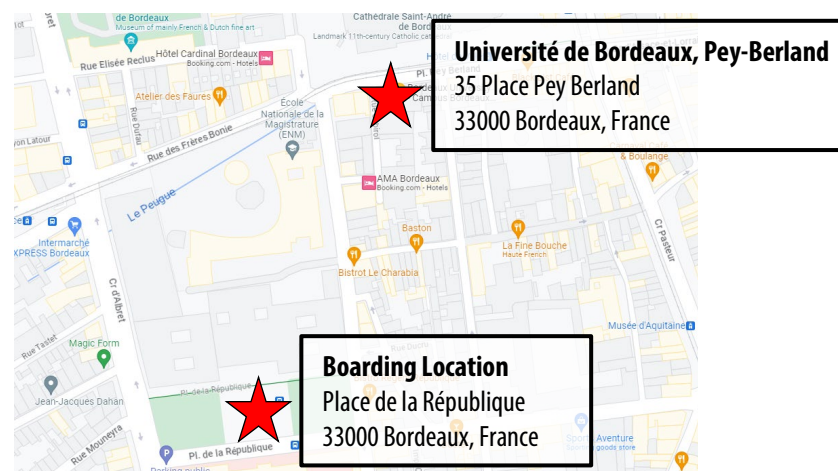


**Tips for a Comfortable Trip**

- Comfortable shoes are recommended to make the most of the cobbled and sometimes steep streets of Saint-Émilion.
- The temperature difference between the outside and the cellars or underground monuments can be significant depending on the season. Visitors may wish to bring a light jacket.
- Several toilets are available in Saint-Émilion, three of which are located at the top of the city (Gendarmerie car park, Espace Villemaurine, and behind the collegiate church) and two at the bottom of the city (near the washhouses and the Place Bouqueyre).

**Schedule**

Time	Details
9:00am	Arrive for check-in and boarding.  Place de la République 33000 Bordeaux, France  <i>Promptness is required as the bus will not wait for late arrivals.</i>
9:15am	Depart Bordeaux
10:30am	Arrive at Saint-Émilion
12:30pm	Depart for Château Haut Sarpe
3:30pm	Depart for Bordeaux
4:30pm	Arrive in Bordeaux



## SESSION PARTICIPANT INDEX

Session organizers, chairs, presenters, and discussants should locate their name below to determine the session(s) in which they are scheduled. Numbers represent page numbers in the program.

**A**

Abay, Kibrom .....	72
Adou, Niango Sika Brice.....	76
Aguiar, Angel .....	18, 77
Ahmadzai, Khwaja Muhammad .....	31
Akgul, Zeynep .....	24, 31
Allroggen, Florian.....	64
Amann, Juergen .....	18
Antimiani, Alessandro .....	23, 77
Argueyrolles, Robin .....	59
Arndt, Channing .....	72

**B**

Baldos, Uris Lantz .....	51
Bartelings, Heleen.....	34
Batbayar, Nyambaatar .....	79
Beckman, Jayson .....	56
Bekkers, Eddy .....	65, 71
Benachir, Ines.....	20
Berndt, Marvin .....	70
Berthet, Etienne .....	19
Bibas, Ruben .....	37
Böhringer, Christoph .....	71
Bouët, Antoine .....	15
Bougzime, Mohammed-Ali .....	21
Boulanger, Pierre .....	45
Bourne, Mike.....	17
Boysen, Ole .....	66
Boysen-Urban, Kirsten.....	68
Britz, Wolfgang .....	40
Burfisher, Mary.....	24, 58

**C**

Calzadilla, Alvaro.....	43
Cantele, Matthew.....	56
Carbonell Rodriguez, Alvaro .....	48
Carrico, Caitlyn .....	22, 76
Castro, Lucio.....	37
Chen, Shenjie .....	29
Chepeliev, Maksym .....	37, 43, 49, 64
Cisneros-Pineda, Alfredo .....	51
Clora, Francesco.....	29, 78

Corong, Erwin.....	16, 29, 41
Countryman, Amanda .....	83
Countryman, Amanda M. ....	24, 42, 83
Creteigny, Laurent.....	78
Cunningham, Teale .....	79

**D**

De Jong, Beyhan.....	34
De Lange, Thijs.....	56
Decaluwe, Bernard.....	24, 45
Dekker, Mark.....	55
Dellink, Rob.....	37, 55
Delzeit, Ruth .....	46
Dixon, Peter .....	16
Döbeling, Tatjana .....	26
Duparc-Portier, Geoffroy .....	80

**E**

Edenhofer, Ottmar .....	15
Ehjeij, Simon .....	66
El Baouchari, Nabil .....	82

**F**

Fernando, Roshen .....	32
Ferrari, Emanuele.....	57
Ferreira, Lorainne.....	52
Ferreira-Filho, Joaquim Bento .....	44
Feuerbacher, Arndt .....	19
Figus, Gioele.....	54
Flaig, Dorothee.....	69, 75
Fontagné, Lionel .....	22, 78
Fouré, Jean.....	41
Fournier Gabela, Julio G.....	53
Fox, Alan .....	26
Fragkiadakis, Dimitris.....	49
Fraysse, Elizabeth.....	25
Freund, Florian.....	39, 70
Fusacchia, Ilaria.....	48, 77

**G**

Gagelmann, Frank.....	49
Galindev, Ragchaasuren.....	28

## ANNUAL CONFERENCE ON GLOBAL ECONOMIC ANALYSIS

Garaffa, Rafael..... 27, 81	Krumbe, Falk..... 19
Garcia Bouyssou, Clara..... 74	Kuiper, Marijke..... 69
Gatto, Alessandro..... 37	Kutlina-Dimitrova, Zornitsa..... 77
Gianetti, Giovanni..... 44	
Gibis, Claudia..... 49	<b>L</b>
Goebel, Theresa..... 51	Laborde, David..... 39, 72
Golub, Alla..... 20, 53	Lansley, Joseph..... 26
Gonzalez-Auhing, Marcos..... 81	Latorre, María C..... 30
Gouel, Christophe..... 17	Lefevre, Julien..... 48
Goulder, Lawrence..... 41	Li, Shantong..... 60
Greig, Alastair..... 70	Lim, Byeong-ho..... 54
Gretton, Paul..... 47	Lim, Hyungwoo..... 27
Gurgel, Angelo..... 44, 53	Liu, Jing..... 44, 73
	Liu, Xianglong Locky..... 47
<b>H</b>	Liu, Xiaotian..... 38
Hadjer, Haned..... 31	Lofgren, Hans..... 50
Hamdi-Cherif, Meriem..... 21, 27	Lopez Barrera, Emiliano..... 38
Haqiqi, Iman..... 25, 32	Luckmann, Jonas..... 19, 75
Harris, Laurence..... 72	Lutz, Christian..... 49
Hauser, Selina..... 18	
Hertel, Thomas..... 25	<b>M</b>
Hillberry, Russell..... 42, 54	Maisonnave, Helene..... 42
Horridge, Mark..... 40	Malina, Robert..... 64
Hu, Xiurong..... 75	Maliszewska, Maryla..... 49, 71
Humphreys, Lee..... 17	Martin, Will..... 45
	Matthews, Alan..... 54
<b>I</b>	Matvejevs, Olegs..... 46
Ianchovichina, Elena..... 34, 74	Meilland, Auriane..... 46
Itakura, Ken..... 73	Mercado Córdova, Jesús Alberto..... 33
Ivanic, Maros..... 79	Metivier, Jeanne..... 65
	Mevel, Simon..... 22, 52
<b>J</b>	Mikou, Mehdi..... 74
Jafari, Yaghoob..... 31	Milot, Catherine..... 33
Jensbye, Laerke..... 46	Mitaritonna, Maria Cristina..... 70
Jhunjhunwala, Kirti..... 65	Mohammed, Abdelradi..... 66
Johnson, Justin..... 51	Moon, Jongwoo..... 41
<b>K</b>	<b>N</b>
Kancs, d'Artis..... 32, 80	Nasser, Ferial..... 82
Karami, Omid..... 38	Nassios, Jason..... 47
Karingi, Stephen..... 22	Nechifor, Victor..... 34
Keogh, Niamh..... 64	Nilsson, Lars..... 76, 77
Kim, Yong-Gun..... 73	
Kinkpe, Thierry..... 45	<b>O</b>
Kitetu, Geoffrey M..... 69	Ojeda, Maria Laura..... 28
Kivedal, Bjornar Karlsen..... 17	Ordonez, Jose Antonio..... 67
Koch, Johannes..... 73	Ortiz Valverde, Gabriela..... 30
Kowalski, Przemyslaw..... 23	Osorio Rodarte, Israel..... 50

## ANNUAL CONFERENCE ON GLOBAL ECONOMIC ANALYSIS

Ouedraogo, Yacouba .....27	Suarez-Cuesta, David.....30
<b>P</b>	Suessspeck, Sascha.....32
Palazzo, Amanda.....51	Sun, Jiaze .....18
Paltsev, Sergey..... 15, 67	<b>T</b>
Parrado, Ramiro .....26	Taheripour, Farzad .....38, 59, 64
Pauw, Karl.....68	Takpara, Moukaila Mouzamilou .....52
Pelikan, Janine .....54	Thierfelder, Karen..... 24, 50
Peng, Xiujian ..... 47, 60	Thube, Sneha .....20
Perdana, Sigit..... 60, 81	ThurLOW, James .....72
Pereira, Maria Filipa Seara .....23	Tran, Trang.....33
Powers, William ..... 16	Tresa, Enxhi.....71
<b>R</b>	<b>V</b>
Radi, David .....28	Valin, Hugo .....39
Ray, Srabashi.....25	van der Mensbrugge, Dominique ..... 15, 25, 40, 49, 55, 83
Rimmer, Maureen ..... 26, 58	Van Ruijven, Bas.....55
Robichaud, Veronique .....24	van Tongeren, Frank.....39
Robinson, Sherman .....50	Voyvoda, Ebru .....48
Rojas-Romagosa, Hugo ..... 27, 42	<b>W</b>
Rose, Adam .....68	Wei, Taoyuan .....41
Roson, Roberto.....21	Weitzel, Matthias ..... 23, 67
Rutherford, Thomas .....67	White, Dominic .....53
<b>S</b>	Winchester, Niven ..... 20, 53
Sadni Jallab, Mustapha..... 52, 66	Witajewski-Baltvilks, Jan .....67
Sahin, Sebnem ..... 42, 68	Wittwer, Glyn.....80
Salib, Youssef .....59	<b>X</b>
Sall, Leysa Maty..... 57, 76	Xiao, Jingliang.....16
Salvatici, Luca.....80	Xu, Yingying.....79
Santoni, Gianluca .....22	<b>Y</b>
Schiffmann, Florian .....40	Yang, Anton ..... 38, 74
Schmidt, Alena .....78	Yilmaz, Ayse Nihal.....71
Schuerer, Laura .....59	Yu, Wusheng.....69
Shah, Hitesh .....40	Yuan, Wen Jin .....16
Shutes, Lindsay ..... 58, 69	<b>Z</b>
Siddig, Khalid ..... 66, 82	Zaki, Chahir .....52
Simola, Antti .....68	Zamani, Omid.....57
So, Yu Roger .....65	Zelege, Abay.....57
Soroka, Natalie.....28	Zhang, Qishi .....70
Souza, Gessica .....81	Zheng, Yu.....22
Springmann, Marco.....75	Zhou, Lingling .....21
Staeher, Daniel.....28	
Standardi, Gabriele..... 33, 56	
Stantcheva, Stefanie .....83	
Stojanov, Aleksandar.....58	
Strutt, Anna .....39	



## PARTICIPANT LIST

**Abay, Kibrom**

IFPRI  
k.abay@cgiar.org

**Adou, Niango Sika Brice**

African Economic Research Consortium  
brice.ansab@gmail.com

**Aguiar, Angel**

Center for Global Trade Analysis, Purdue University  
aaguiar@purdue.edu

**Ahmadzai, Khwaja Muhammad**

World Trade Institute  
khwaja.ahmadzai@wti.org

**Akgul, Zeynep**

Center for Global Trade Analysis, Purdue University  
zakgul@purdue.edu

**Allroggen, Florian**

Massachusetts Institute of Technology  
fallrogg@mit.edu

**Amann, Juergen**

OECD  
juergen.amann@oecd.org

**Antimiani, Alessandro**

European Commission, DG TRADE  
alessandro.antimiani@ec.europa.eu

**Argueyrolles, Robin**

University of Basel  
robin.argueyrolles@unibas.ch

**Arndt, Channing**

International Food Policy Research Institute  
c.arndt@cgiar.org

**Arriola, Christine**

OECD  
christine.arriola@oecd.org

**Baldos, Uris Lantz**

Center for Global Trade Analysis, Purdue University  
ubaldos@purdue.edu

**Bartelings, Heleen**

Wageningen Economic Research  
heleen.bartelings@wur.nl

**Batbayar, Nyambaatar**

Economic Research Institute  
nyambaa95@gmail.com

**Batta, Ginger**

Center for Global Trade Analysis, Purdue University  
gbatta@purdue.edu

**Beckman, Jayson**

Economic Research Service, US Department of Agriculture  
jayson.beckman@usda.gov

**Bekkers, Eddy**

World Trade Organization  
eddybekkers@gmail.com

**Benachir, Ines**

Tsinghua Berkeley Shenzhen Institute  
ines.benachir@live.com

**Berndt, Marvin**

Dept. of Agricultural Markets 420b, University of Hohenheim  
marvin.berndt@uni-hohenheim.de

**Berthet, Etienne**

Technical University of Denmark  
etber@dtu.dk

**Bibas, Ruben**

OECD  
ruben.bibas@oecd.org

**Böhringer, Christoph**

University of Oldenburg  
boehringer@uni-oldenburg.de

**Bouët, Antoine**

CEPII  
antoine.bouet@cepii.fr

**Bougzime, Mohammed-Ali**

Cadi Ayyad University  
bougzimemohammedali.meigd@gmail.com

**Boulanger, Pierre**

CGIAR Independent Advisory and Evaluation Service  
p.boulanger@cgiar.org

**Bourne, Mike**

DEFRA  
michael.bourne@defra.gov.uk

**Boysen, Ole**

European Commission, Joint Research Centre (JRC)  
ole.boysen@ucd.ie

**Boysen-Urban, Kirsten**

University of Hohenheim  
kirsten.urban@uni-hohenheim.de

**Britz, Wolfgang**

University of Bonn  
wolfgang.britz@ilr.uni-bonn.de

**Burfisher, Mary**

Center for Global Trade Analysis, Purdue University  
burfisher@gmail.com

**Calzadilla, Alvaro**

KPMG LLP (UK)  
alvaro.calzadilla@kpmg.co.uk

**Cance, Raphael**

French Ministry of Ecology  
raphael.cance@developpement-durable.gouv.fr

**Cantele, Matthew**

University of Melbourne  
mcantele@student.unimelb.edu.au

**Carbonell Rodriguez, Alvaro**

OECD / London School of Economics  
alvarocarro31@hotmail.com

**Carrico, Caitlyn**

United Nations Economic Commission for Africa  
caitlyn.carrico@un.org

**Castro, Lucio**

IFC  
lcastro@ifc.org

**Chaineaud, Christel**

Université de Bordeaux  
christel.chaineaud@u-bordeaux.fr

**Chang, Jeong-In**

Korea Maritime Institute  
jeongin@kmi.re.kr

**Chen, Shenjie**

Office of the Chief Economist, Global Affairs Canada  
shenjie.chen@international.gc.ca

**Chen, Zhenhua**

The Ohio State University  
chen.7172@osu.edu

**Chepeliev, Maksym**

Center for Global Trade Analysis, Purdue University  
mchepeleli@purdue.edu

**Cicowiez, Martin**

CEDLAS-Universidad Nacional de La Plata  
martin@depeco.econo.unlp.edu.ar

**Cisneros-Pineda, Alfredo**

Center for Global Trade Analysis, Purdue University  
cisnero0@purdue.edu

**Clora, Francesco**

Dept of Food and Resource Economics, University of Copenhagen  
fc@ifro.ku.dk

**Corong, Erwin**

Center for Global Trade Analysis, Purdue University  
ecorong@purdue.edu

**Countryman, Amanda**

Colorado State University  
amanda.countryman@colostate.edu

**Creteigny, Laurent**

KPMG International Services Limited  
laurentcreteigny@kpmg.com

**Cunningham, Teale**

UK Government  
teale.cunningham@defra.gov.uk

**De Jong, Beyhan**

Joint Research Center - European Commission  
beyhan.de-jong@ec.europa.eu

**De Lange, Thijs**

Wageningen Economic Research  
thijs.delange@wur.nl

**Decaluwe, Bernard**

Université Laval  
bernard.decaluwe.1@ulaval.ca

**Dekker, Mark**

PBL Netherlands Environmental Assessment Agency  
m.m.dekker@uu.nl

**Dellink, Rob**

OECD  
rob.dellink@oecd.org

**Delzeit, Ruth**

University of Basel  
ruth.delzeit@unibas.ch

**Dixon, Peter**

Victoria University  
peter.dixon@vu.edu.au

**Döbeling, Tatjana**

Thünen-Institut  
tatjana.doebeling@thuenen.de

**Duparc-Portier, Geoffroy**

University of Strathclyde  
g.duparc-portier@strath.ac.uk

**Edenhofer, Ottmar**

Potsdam Institute for Climate Impact Research (PIK)  
ottmar.edenhofer@pik-potsdam.de

**Ehjeij, Simon**

University of Hohenheim  
simon.ehjeij@gmail.com

**El Baouchari, Nabil**

Mohammed V University in Rabat  
nabil.elbaouchari@um5s.net.ma

**Fernando, Roshen**

The Australian National University  
u6634075@anu.edu.au

**Ferrari, Emanuele**

European Commission - Joint Research Centre (JRC)  
emanuele.ferrari@ec.europa.eu

**Ferreira, Lorraine**

North-West University  
lorainne.ferreira@nwu.ac.za

**Ferreira-Filho, Joaquim Bento**

Escola Superior de Agricultura Luiz de Queiroz  
jbsferre@usp.br

**Feuerbacher, Arndt**

University of Hohenheim  
a.feuerbacher@uni-hohenheim.de

**Figus, Gioele**

University of Strathclyde  
gioele.figus@strath.ac.uk

**Flaig, Dorothee**

University of Hohenheim  
dorothee.FLAIG@uni-hohenheim.de

**Fontagné, Lionel**

Université Paris 1 / CEPII  
lionel.fontagne@univ-paris1.fr

**Fouré, Jean**

OECD  
Jean.FOURE@oecd.org

**Fournier Gabela, Julio G.**

Thuenen Institute  
julio.fournier@thuenen.de

**Fox, Alan**

US International Trade Commission (USITC)  
Alan.Fox@usitc.gov

**Fragkiadakis, Dimitris**

E3-Modelling S.A.  
dfragkiadakis@e3modelling.com

**Fraysse, Elizabeth**

Center for Global Trade Analysis, Purdue University  
efraysse@purdue.edu

**Freund, Florian**

Thünen Institute of Market Analysis  
florian.freund@thuenen.de

**Fusacchia, Ilaria**

University of Roma Tre  
ilaria.fusacchia@uniroma3.it

**Gagelmann, Frank**

Federal Environmental Agency UBA  
frank.gagelmann@uba.de

**Galindev, Ragchaasuren**

World Bank  
Ragchaasuren.galindev@gmail.com

**Garaffa, Rafael**

European Commission - JRC Seville  
rafael.garaffa@ec.europa.eu

**Garcia Bouyssou, Clara**

University of Copenhagen  
cgb@ifro.ku.dk

**Gatto, Alessandro**

Wageningen University and Research  
alessandro.gatto@wur.nl

**Gianetti, Giovanni**

Escola Superior de Agricultura Luiz de Queiroz, Univ de Sao Paulo  
giovanni.gianetti@gmail.com

**Gibis, Claudia**

German Environment Agency  
claudia.gibis@uba.de

**Goebel, Theresa**

Institute for Food and Resource Economics, University of Bonn  
theresa.goebel@ilr.uni-bonn.de

**Gohin, Alex**

INRA  
Alexandre.Gohin@inra.fr

**Golub, Alla**

Center for Global Trade Analysis, Purdue University  
golub@purdue.edu

**Gonzalez-Auhing, Marcos**

Universidad EAFIT  
megonzalea@eafit.edu.co

**Gouel, Christophe**

INRAE  
christophe.gouel@inrae.fr

**Goulder, Lawrence**

Stanford University  
goulder@stanford.edu

**Greig, Alastair**

AFBI  
alastair.greig@afbini.gov.uk

**Gretton, Paul**

Australian National University  
gretton.paul@gmail.com

**Gurgel, Angelo**

Massachusetts Institute of Technology  
angelo\_gurgel@yahoo.com.br

**Hadjer, Haned**

École Nationale Supérieure de Statistique et de L'économie Appliquée  
haned.hadjer.enssea@gmail.com

**Hamdi-Cherif, Meriem**

OFCE Sciences Po - French Economic Observatory  
meriem.hamdicherif@sciencespo.fr

**Haqiqi, Iman**

Center for Global Trade Analysis, Purdue University  
ihqiqi@purdue.edu

**Harris, Laurence**

SOAS, University of London  
lharris.uol@gmail.com

**Hauser, Selina**

World Trade Institute, University of Bern  
selina.hauser@wti.org

**He, Jianwu**

Development Research Center of State Council  
jianwudrc@126.com

**Hertel, Thomas**

Center for Global Trade Analysis, Purdue University  
hertel@purdue.edu

**Hillberry, Russell**

Department of Agricultural Economics, Purdue University  
rhillber@purdue.edu

**Horridge, Mark**

Centre of Policy Studies, Victoria University  
mark.horridge@gmail.com

**Hu, Xiurong**

Nanjing University of Aeronautics and Astronautics  
xiurong@nuaa.edu.cn

**Humphreys, Lee**

Department for International Trade  
lee.humphreys@trade.gov.uk

**Ianchovichina, Elena**

The World Bank  
eianchovichina@worldbank.org

**Itakura, Ken**

Nagoya City University  
itakura@econ.nagoya-cu.ac.jp

**Ivanic, Maros**

ERS-USDA  
ivanic@gmail.com

**Iwamoto, Tomohiro**

Fukui University of Technology  
iwamoto@fukui-ut.ac.jp

**Jafari, Yaghoob**

University of Bonn  
yaghoob.jafari@gmail.com

**Jensbye, Laerke**

University of Copenhagen  
lgj@ifro.ku.dk

**Jhunjunwala, Kirti**

World Trade Organization  
kirti.jhunjunwala@graduateinstitute.ch

**Johnson, Justin**

University of Minnesota  
jandrewjohnson@gmail.com

**Kancs, d'Artis**

European Commission  
 dartis.kancs@gmail.com

**Karami, Omid**

Department of Agricultural Economics, Purdue University  
 okarami@purdue.edu

**Karingi, Stephen**

United Nations Economic Commission for Africa (UNECA)  
 karingi@un.org

**Keogh, Niamh**

Massachusetts Institute of Technology  
 nkeogh@mit.edu

**Kim, Yong-Gun**

Korea Environment Institute  
 ygkim@kei.re.kr

**Kinkpe, Thierry**

Humboldt-Universität zu Berlin  
 kinkpeth@hu-berlin.de

**Kitetu, Geoffrey M.**

Division of Int'l and Area Studies, Pukyong National University  
 geoffreykitetu.m@gmail.com

**Kivedal, Bjornar Karlsen**

Ostfold University College  
 bjornark@hiof.no

**Koch, Johannes**

Potsdam Institute for Climate Impact Research  
 jokoch@pik-potsdam.de

**Kowalski, Przemyslaw**

OECD  
 przemyslaw.kowalski@oecd.org

**Krumbe, Falk**

University of Hohenheim  
 falk.krumbe@uni-hohenheim.de

**Kuiper, Marijke**

Wageningen Economic Research  
 Marijke.Kuiper@wur.nl

**Kutlina-Dimitrova, Zornitsa**

European Commission, Directorate-General for TRADE  
 zornitsa.kutlina-dimitrova@ec.europa.eu

**Laborde, David**

FAO  
 david.laborde@fao.org

**Lansley, Joseph**

Department for International Trade, UK Civil Service  
 joe.lansley2@gmail.com

**Latorre, María C.**

Universidad Complutense de Madrid  
 cmlatorre@estad.ucm.es

**Lefevre, Julien**

CIREC  
 jlefevre@centre-cired.fr

**Li, Shantong**

Development Research Center of the State Council  
 lishantong333@126.com

**Lim, Byeong-ho**

Korea Maritime Institute  
 bhlim@kmi.re.kr

**Lim, Hyungwoo**

Korea Environment Institute  
 hyungwoo.lim0206@gmail.com

**Liu, Jing**

Center for Global Trade Analysis, Purdue University  
 liu207@purdue.edu

**Liu, Xianglong Locky**

Centre of Policy Studies, Victoria University  
 locky.liu@vu.edu.au

**Liu, Xiaomuzi**

Ecole Polytechnique  
 xiaomuzi.liu@polytechnique.edu

**Liu, Xiaotian**

Huazhong Agricultural University  
 xiaotianliu@mail.hzau.edu.cn

**Lofgren, Hans**

Independent Researcher  
 hanslofgren01@outlook.com

**Lopez Barrera, Emiliano**

Texas A&M University  
 elopezba@tamu.edu

**Luckmann, Jonas**

Humboldt Universität zu Berlin  
 luckmann@hu-berlin.de

**Lutz, Christian**

Institute of Economic Structures Research  
 lutz@gws-os.com

**Maisonnave, Helene**

University of Le Havre  
hmaisonnave@hotmail.fr

**Malina, Robert**

Hasselt University and MIT  
robert.malina@uhasselt.be

**Maliszewska, Maryla**

The World Bank  
mmaliszewska@worldbank.org

**Martin, Will**

International Food Policy Research Institute (IFPRI)  
w.martin@cgiar.org

**Matthews, Alan**

Trinity College Dublin, Ireland  
Alan.Matthews@tcd.ie

**Matvejevs, Olegs**

Bank of Latvia  
olegs.matvejevs@bank.lv

**McIntire, Holly**

Center for Global Trade Analysis, Purdue University  
hmcinti@purdue.edu

**Meilland, Auriane**

CIREA  
meilland.auriane@gmail.com

**Mercado Córdova, Jesús Alberto**

Seoul National University  
mercado.cordova86@gmail.com

**Metivier, Jeanne**

WTO  
jeannemetivier@gmail.com

**Mevel, Simon**

United Nations Economic Commission for Africa  
mevel@un.org

**Mikou, Mehdi**

CIREA  
mehdi.mikou@universite-paris-saclay.fr

**Milot, Catherine**

Department for International Trade (DIT)  
Catherine.Milot@trade.gov.uk

**Mitaritonna, Maria Cristina**

CEPII  
cristina.mitaritonna@cepii.fr

**Mohammed, Abdelradi**

University of Basel  
a.mohammed@unibas.ch

**Moon, Jongwoo**

Korea Environment Institute  
jwmoon@kei.re.kr

**Mustakinov, Dean**

Centre of Policy Studies, Victoria University  
dean.mustakinov@vu.edu.au

**Nasser, Feriel**

ESSECT-Tunisia  
ferielnasser@gmail.com

**Nassios, Jason**

Centre of Policy Studies  
jason.nassios@vu.edu.au

**Nechifor, Victor**

Joint Research Centre  
victor.nechifor@ec.europa.eu

**Nilsson, Lars**

European Commission - DG Trade  
lars.nilsson@ec.europa.eu

**Ojeda, Maria Laura**

University of Buenos Aires  
malauraajeda@gmail.com

**Ordonez, Jose Antonio**

European Commission  
jose.ordonez@ec.europa.eu

**Ortiz Valverde, Gabriela**

Universidad Nacional de Costa Rica  
gabriela.ortiz.valverde@una.cr

**Osorio Rodarte, Israel**

The World Bank  
iosoriorodarte@worldbank.org

**Ouedraogo, Yacouba**

University of Stellenbosch  
yacouba\_ouedraogo@yahoo.com

**Oyamada, Kazuhiko**

Inst of Developing Economies, Japan External Trade Organization  
kazuhiko\_oyamada@ide.go.jp; oyamada@d1.dion.ne.jp

**Paczos, Marta**

Department for International Trade  
mmpaczos@protonmail.com

**Palazzo, Amanda**

International Institute for Applied Systems Analysis  
palazzo@iiasa.ac.at

**Paltsev, Sergey**

MIT Joint Program on the Science and Policy of Global Change  
paltsev@mit.edu

**Paroussos, Leonidas**

E3-Modelling SA  
info@e3modelling.com

**Parrado, Ramiro**

Fondazione Centro Euro-Mediterraneo sui Cambiamenti Climatici  
ramiro.parrado@cmcc.it

**Pauw, Karl**

International Food Policy Research Institute (IFPRI)  
k.pauw@cgiar.org

**Peck, Francesca**

Defra  
francesca.peck@defra.gov.uk

**Pelikan, Janine**

Thünen Institute of Market Analysis  
janine.pelikan@thuenen.de

**Peng, Hantang**

Tsinghua University  
pht21@mails.tsinghua.edu.cn

**Peng, Xiujian**

Centre of Policy Studies, Victoria University  
xiujian.peng@vu.edu.au

**Perdana, Sigit**

Ecole Polytechnique Federale de Lausanne  
sigit.perdana@epfl.ch

**Pereira, Maria Filipa Seara**

Center for Global Trade Analysis, Purdue University  
msearaep@purdue.edu

**Powers, William**

US International Trade Commission  
william.powers@usitc.gov

**Qi, Zike**

Peking University  
qizike@qq.com

**Qu, Chenfei**

Institute of Energy, Environment & Economy, Tsinghua University  
qcf20@mails.tsinghua.edu.cn

**Quilleriet, Marie-Clementine**

Ministry of the ecological transition  
marie-clementine.quilleriet@etu.minesparis.psl.eu

**Radi, David**

DIT  
david.radi@trade.gov.uk

**Rasmussen, Chris**

US Department of Commerce  
chris.rasmussen@trade.gov

**Ray, Srabashi**

Center for Global Trade Analysis, Purdue University  
ray152@purdue.edu

**Rimmer, Maureen**

Centre of Policy Studies  
maureen.bleazby@vu.edu.au

**Robichaud, Veronique**

CIRPEE Universite Laval  
veronique.robichaud@gmail.com

**Robinson, Sherman**

International Food Policy Research Institute (IFPRI)  
S.Robinson@cgiar.org

**Rojas-Romagosa, Hugo**

International Monetary Fund  
hrojas-romagosa@imf.org

**Rose, Adam**

University of Southern California  
adam.rose@usc.edu

**Roson, Roberto**

Ca'Foscari University and Loyola Andalusia University  
roson@unive.it

**Rutherford, Thomas**

University of Wisconsin Madison  
rutherford@aae.wisc.edu

**Sadni Jallab, Mustapha**

WTO  
mustapha.sadnijallab@wto.org

**Sahin, Sebnem**

BAU International  
ssahin@bau.edu

**Salib, Youssef**

PSE  
youssef.salib@psemail.eu

**Sall, Leysa Maty**

CEPII  
leysa.maty.sall@gmail.com

**Salvatici, Luca**

Università Roma Tre  
luca.salvatici@uniroma3.it

**Santoni, Gianluca**

CEPII  
gianluca.santoni@cepii.fr

**Santoro, Marika**

International Monetary Fund  
msantoro@imf.org

**Schiffmann, Florian**

Victoria University  
florian.schiffmann@vu.edu.au

**Schmidt, Alena**

University of Basel  
alena.schmidt@unibas.ch

**Schürer, Laura**

University of Oldenburg  
laura.schuerer@uni-oldenburg.de

**Shah, Hitesh**

Department for International Trade  
hitesh.shah@trade.gov.uk

**Shutes, Lindsay**

Freelance  
lindsayjshutes@gmail.com

**Siddig, Khalid**

International Food Policy Research Institute  
k.siddig@cgiar.org

**Simola, Antti**

European Commission - Joint Research Center  
antti.simola@ec.europa.eu

**So, Yu Roger**

Graduate Institute of International and Development Studies  
yu.so@wto.org

**Song, Zhongwei**

University of Chinese Academy of Sciences  
songzhongwei22@mails.ucas.ac.cn

**Soroka, Natalie**

International Trade Administration  
natalie.soroka@trade.gov

**Souza, Gessica**

UFMG / CEDEPLAR  
gessicacps@yahoo.com.br

**Springmann, Marco**

University of Oxford  
marco.springmann@ouce.ox.ac.uk

**Staeher, Daniel**

FernUniversitaet in Hagen  
daniel.staeher@fernuni-hagen.de

**Standardi, Gabriele**

CMCC - Euro-Mediterranean Center on Climate Change  
gabriele.standardi@cmcc.it

**Stantcheva, Stefanie**

Harvard University  
sstantcheva@fas.harvard.edu

**Stojanov, Aleksandar**

World Bank  
astojanov@worldbank.org

**Strutt, Anna**

University of Waikato  
astrutt@waikato.ac.nz

**Suarez-Cuesta, David**

Universidad Complutense de Madrid  
dsuare04@ucm.es

**Suessspeck, Sascha**

None  
sascha.suessspeck@gmail.com

**Sun, Jiaze**

Tsinghua University  
sunjiaze1991@126.com

**Suzuki, Susumu**

Economic & Social Research Institute, Cabinet Office, Gov't of Japan  
susumu.suzuki.j8b@cao.go.jp

**Taheripour, Farzad**

Department of Agricultural Economics, Purdue University  
tfarzad@purdue.edu

**Takpara, Moukaila Mouzamilou**

Pan African University-African Union Commission  
takpara2025@gmail.com

**Tenison, Brooke**

Department of Commerce, International Trade Administration  
brooke.tenison@trade.gov



**Thierfelder, Karen**  
USNA-ECONOMICS DEPT  
thier@usna.edu

**Thube, Sneha**  
International Monetary Fund  
sthube@imf.org

**Thurlow, James**  
International Food Policy Research Institute (IFPRI)  
j.thurlow@cgiar.org

**Tran, Trang**  
CSIRO  
t.tran@csiro.au

**Tresa, Enxhi**  
OECD  
enxhi.tresa@oecd.org

**Valin, Hugo**  
OECD  
hugo.valin@oecd.org

**van der Mensbrugghe, Dominique**  
Center for Global Trade Analysis, Purdue University  
vandermd@purdue.edu

**Van Ruijven, Bas**  
International Institute for Applied Systems Analysis  
vanruijv@iiasa.ac.at

**van Tongeren, Frank**  
Organisation for Economic Co-operation and Development  
frank.vantongeren@oecd.org

**Voyvoda, Ebru**  
Middle East Technical Univ.  
voyvoda@metu.edu.tr

**Wei, Taoyuan**  
CICERO Center for International Climate Research  
taoyuan.wei@cicero.uio.no

**Weitzel, Matthias**  
European Commission - Joint Research Centre  
matthias.weitzel@ec.europa.eu

**White, Dominic**  
Auckland University of Technology  
jjp6776@autuni.ac.nz

**Winchester, Niven**  
Auckland University of Technology  
niven.winchester@aut.ac.nz

**Witajewski-Baltvilks, Jan**  
The World Bank  
jwitajewskibaltv@worldbank.org

**Wittwer, Glyn**  
Centre of Policy Studies  
glyn.wittwer@vu.edu.au

**Xiao, Jingliang**  
Office of the Chief Economist, Global Affairs Canada  
jingliang.xiao@international.gc.ca

**Xu, Yingying**  
International Trade Administration, Department of Commerce  
yyxuprivate@gmail.com

**Yang, Anton**  
Department of Economics, Yale University  
anton.yang@yale.edu

**Yilmaz, Ayse Nihal**  
World Trade Organization  
aysenihal.yilmaz@wto.org

**Yu, Wusheng**  
Dept of Food and Resource Economics, University of Copenhagen  
wusheng@ifro.ku.dk

**Yuan, Wen Jin**  
U.S. International Trade Commission  
wen.yuan@usitc.gov

**Zaki, Chahir**  
Cairo University and ERF  
chahir.zaki@efps.edu.eg

**Zamani, Omid**  
Thuenen Institute  
omid.zamani@thuenen.de

**Zelege, Abay**  
GRIPS  
phd20601@grips.ac.jp

**Zhang, Da**  
Tsinghua University, China  
zhangda1021@gmail.com

**Zhang, Qishi**  
Shanghaijiaotong University  
zhangqishi@sjtu.edu.cn

**Zheng, Yu**  
CEPII  
yu.zheng@cepii.fr

**Zhou, Lingling**  
China University of Geosciences  
zhouling\_zoe@163.com

